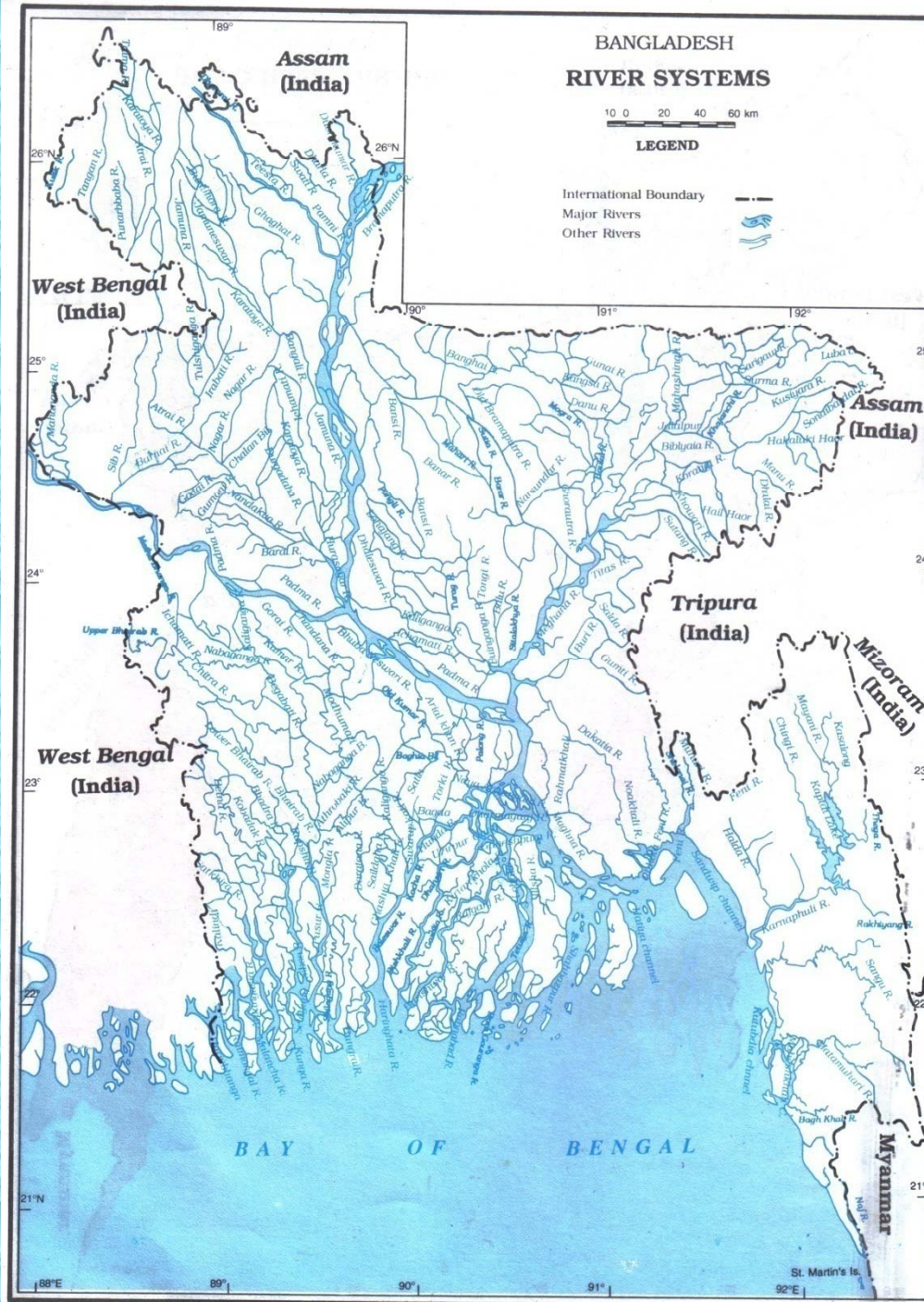


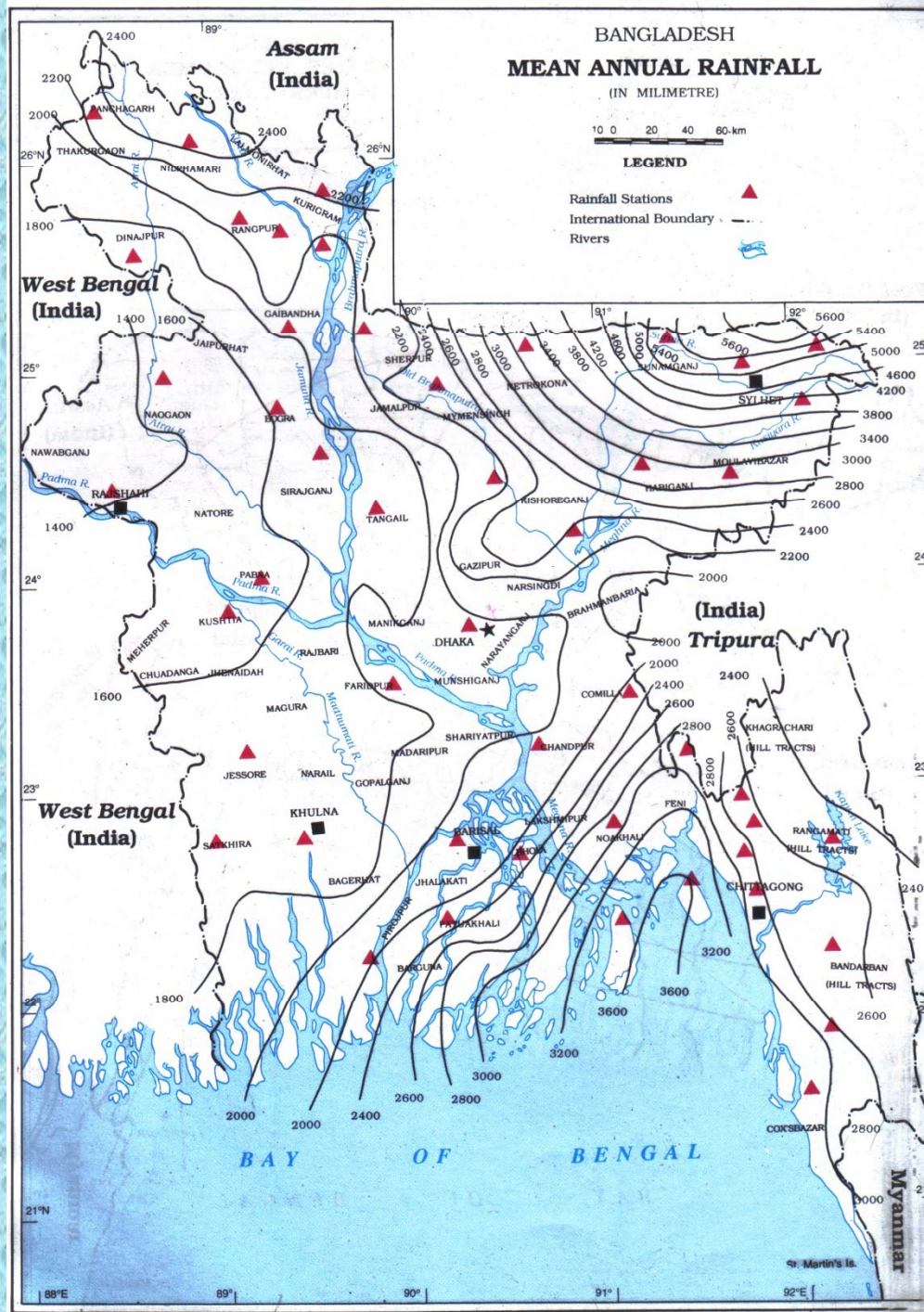
**2 nd Thematic Workshop
on Water Related Disaster and Its
Management
Oct.7-10, Manila Philippines 2008**

Assignment on Water-Related
Disaster and its Management
in Bangladesh

Shamsul Huda Khan



Prepared by the Remote Sensing Research & Remote Sensing Organization (ISPARRSO) and Bangladesh Water Development Board.



Source : Bangladesh Meteorological Department, 1994.

**BANGLADESH
AVERAGE ANNUAL DEPTHS OF
INUNDATION**

10 0 20 40 60 km

LEGEND

Depth of Flooding (in cm)

0-30

30-120

120-270

270 and Above

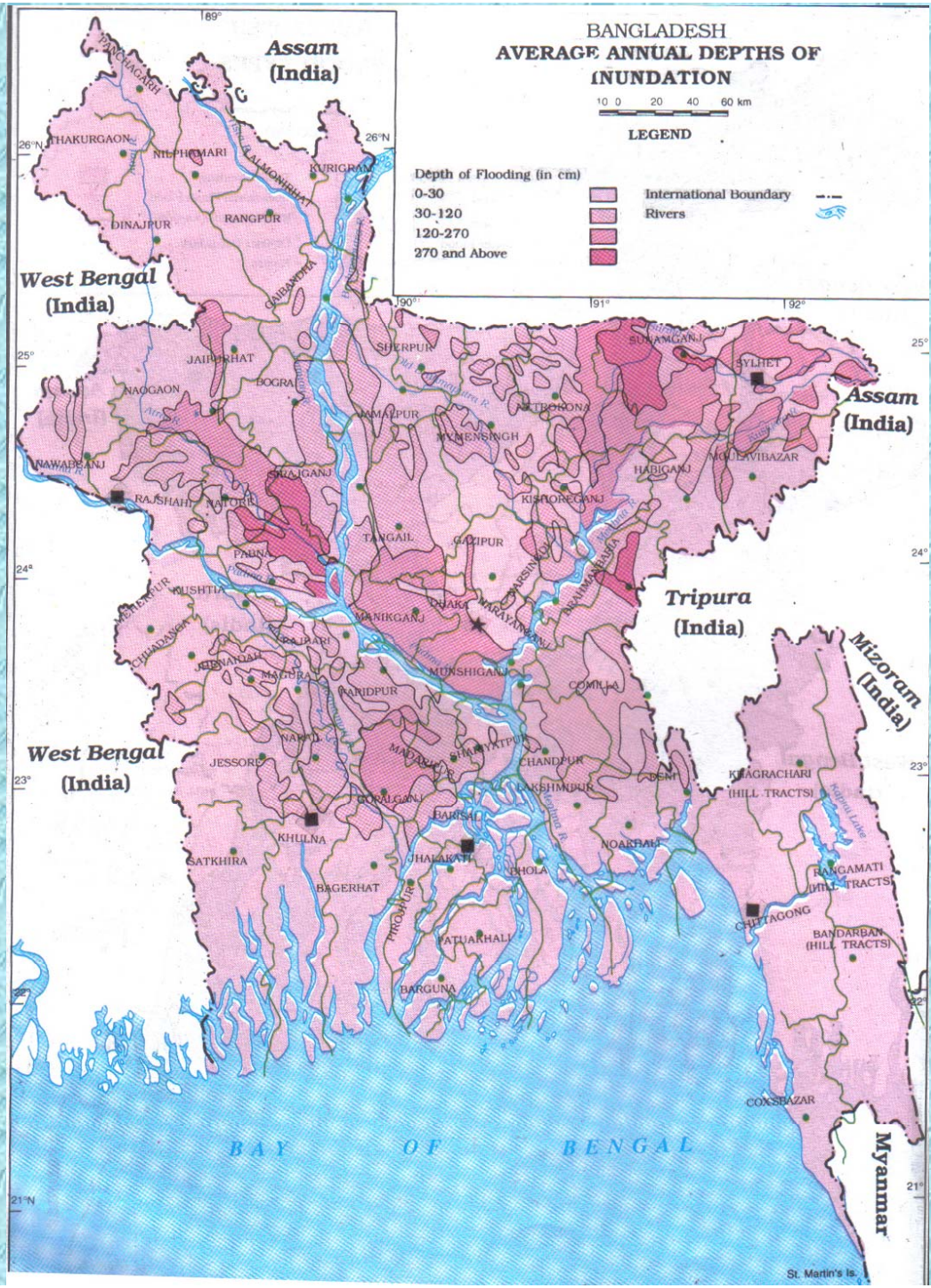
International Boundary

Rivers

—

—

—

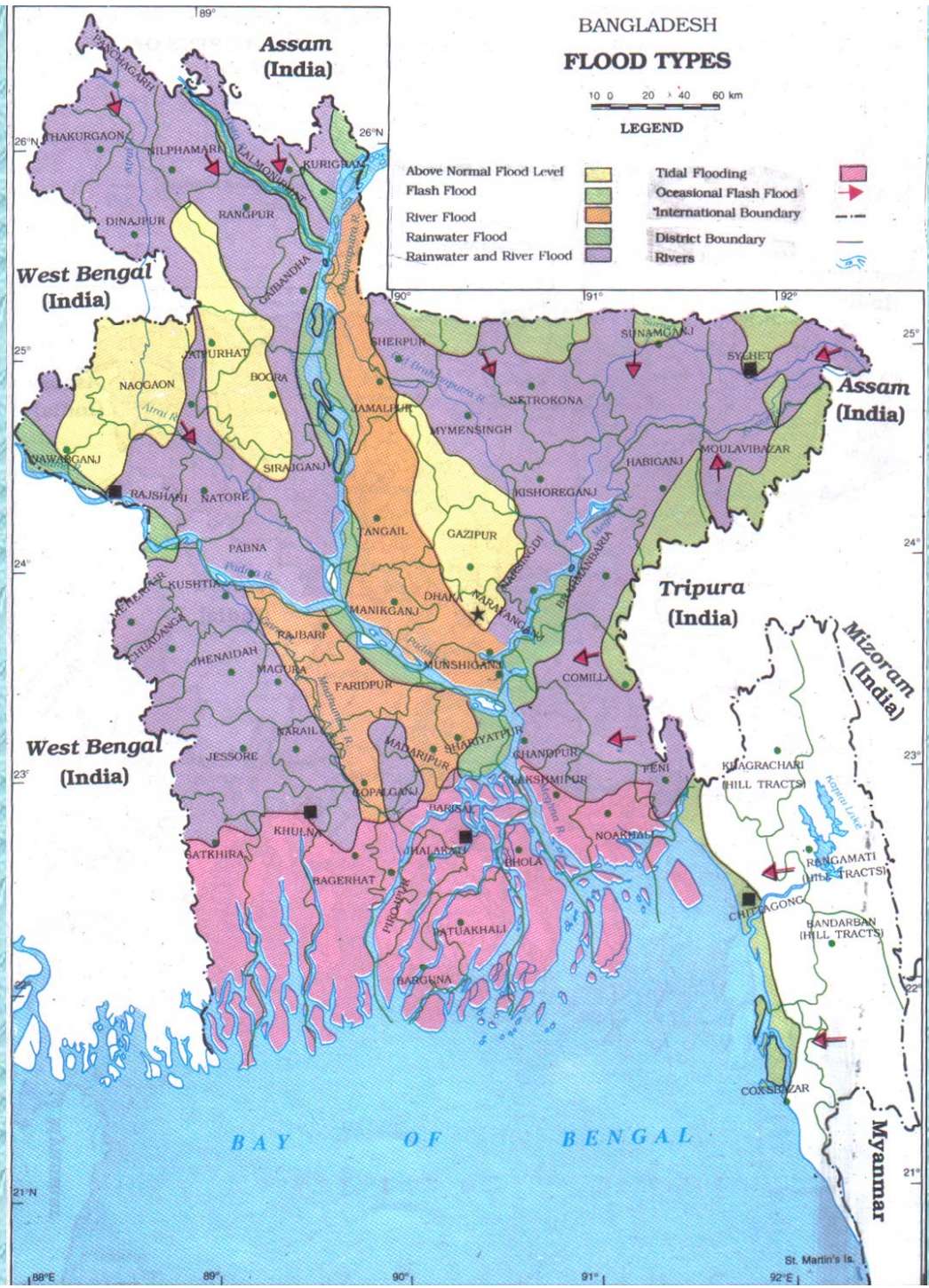


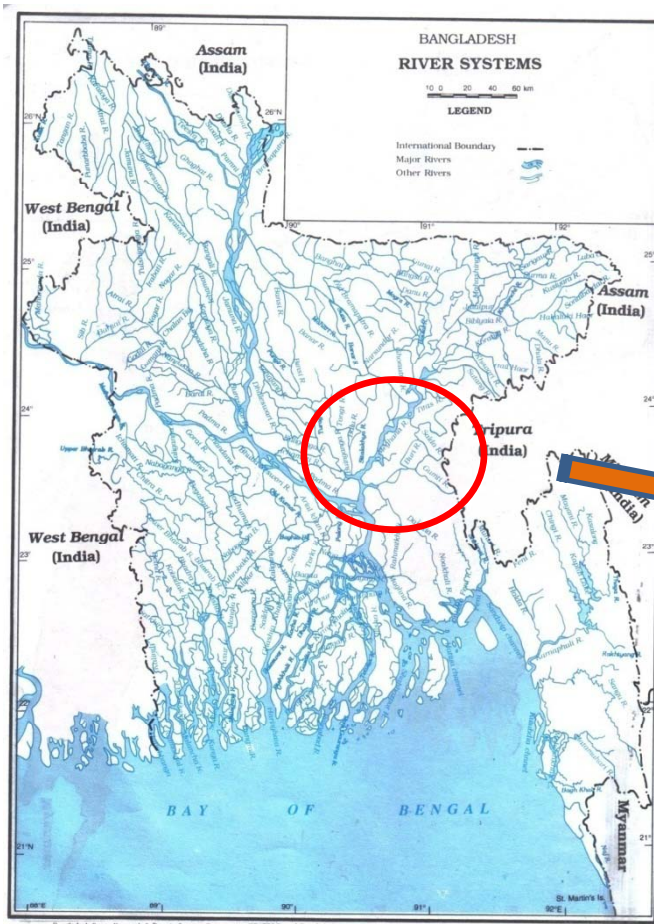
**BANGLADESH
FLOOD TYPES**

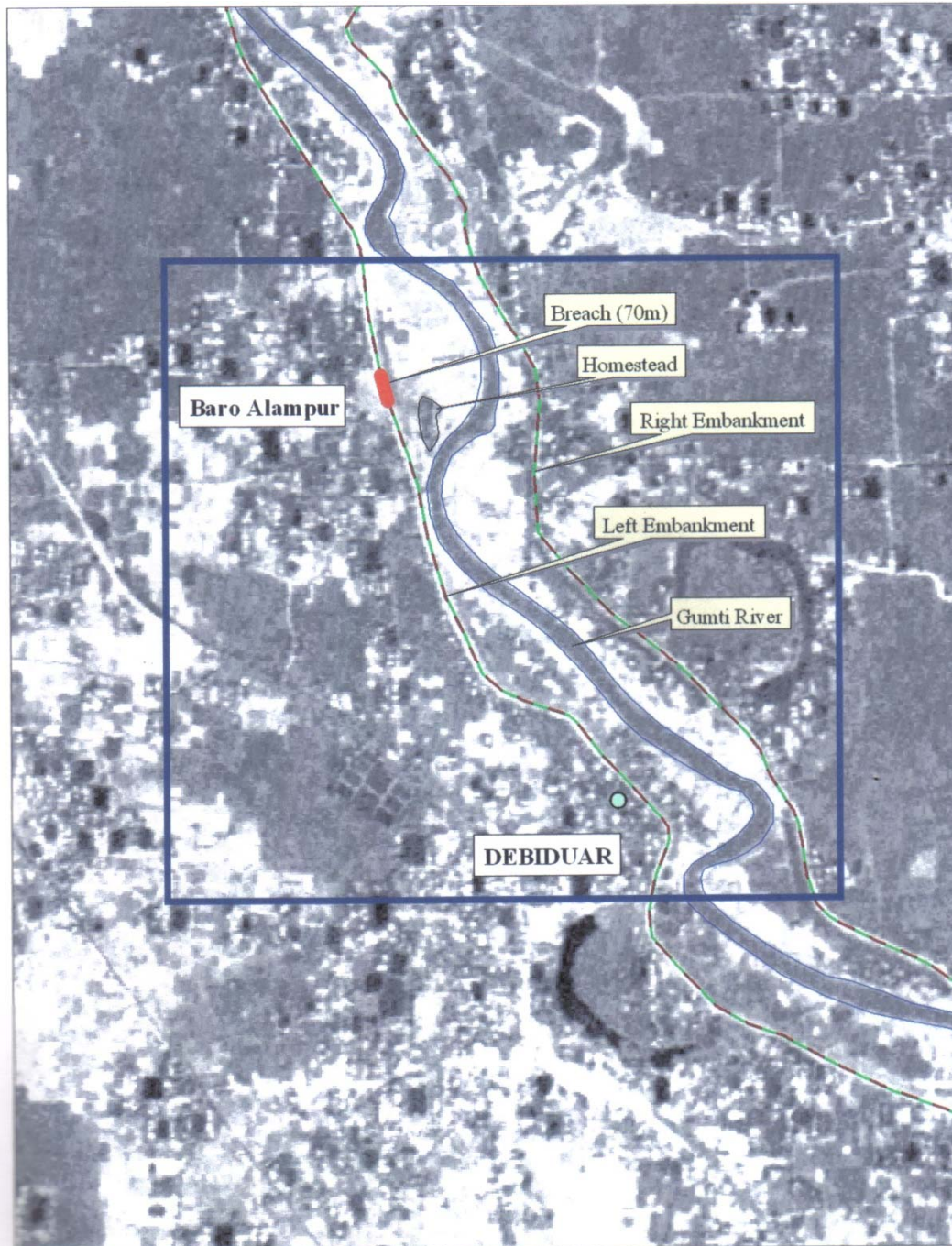
10 0 20 40 60 km

LEGEND

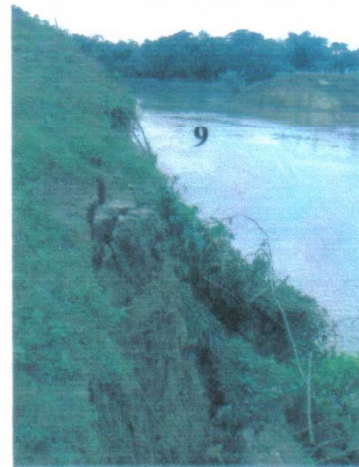
- | | | | |
|---------------------------|-------------|------------------------|-------------|
| Above Normal Flood Level | Yellow | Tidal Flooding | Pink |
| Flash Flood | Light Green | Occasional Flash Flood | Dark Green |
| River Flood | Orange | International Boundary | Dashed line |
| Rainwater Flood | Dark Green | District Boundary | Solid line |
| Rainwater and River Flood | Purple | Rivers | Blue line |







Location Map of Breach on the IRS image dated March 27, 2003



Photoes (7 to 10) showing earth slide and soil condition of breach portion of embankment

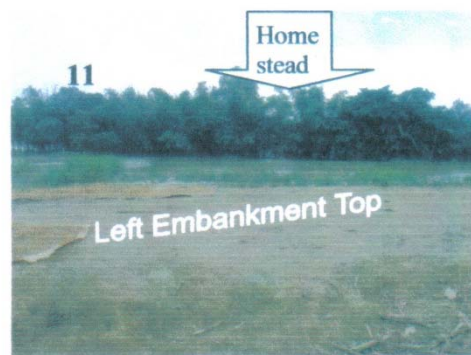
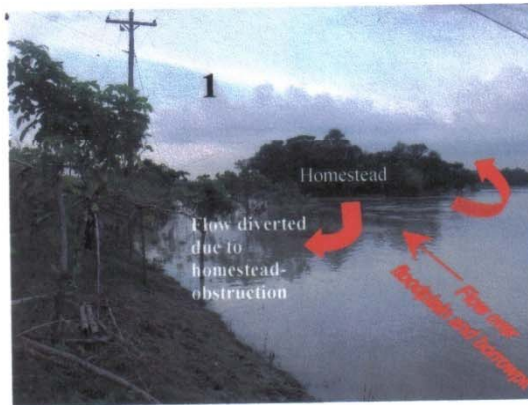


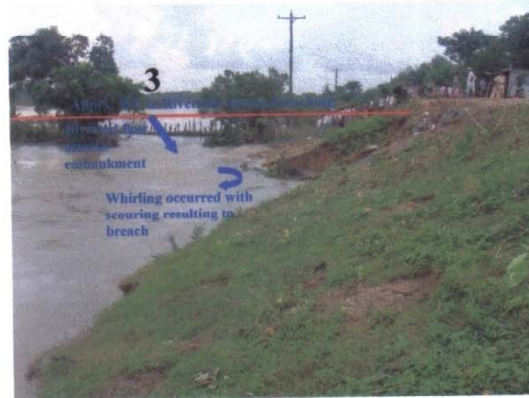
Photo (11) showing homestead 70m far from LE and Main River is 130m behind the homestead not seen



Photo(12) showing BWDB and security personals at the breach location



Photoes (1 to 2) showing existing situations near the breach



Photoes (3 to 4) describing a reason for breach at Bara Alampur, Devidwar, Comilla



Photoes (5-6) showing breach occurred at Bara Alampur, Devidwar, Comilla



**Thank You
for your attention**