

Session 3.4 4 Knowledgebase for IWRM

“COLLABORATIVE WATER DATA MANAGEMENT FOR KNOWLEDGE DEVELOPMENT “

17:00-19:00, 14 April, 2015

DEC_305 DAEGU - EXCO 3F
Room 315, Daegu



Paul HAENER
International Office for Water
FRANCE
p.haener@oieau.fr

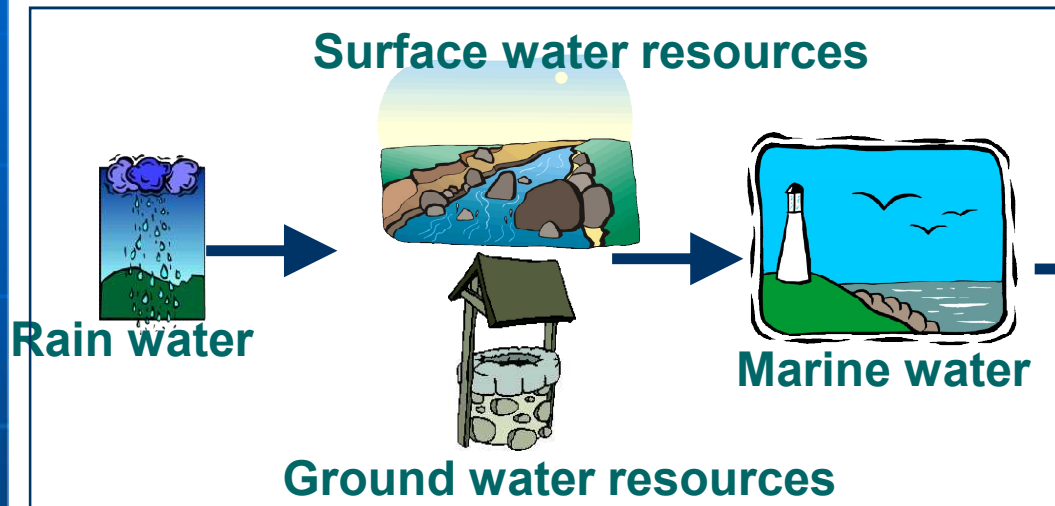
Needs for data/information/knowledge

- **Efficient IWRM requires to develop the production of information necessary to better guide water resource management decision making** for planning, assessing the impact of development project, earmarked charges, ...
- **Various levels of water management with various roles**
 - National water resource planning
 - Basin Water resource planning
 - Local operational management (Province, district, municipal level, dams operation, ...)
 - Transboundary water management basins (Mekong)
- **Different users of information with different needs in information for decision taking**
 - each one requires reliable, up-to-date and relevant information on different issues (regulations, planning, risk management and public information...)
 - Type of information to produce are different : level of aggregation, way of processing, giving access, presenting and are different
 - Type of necessary basic data are different

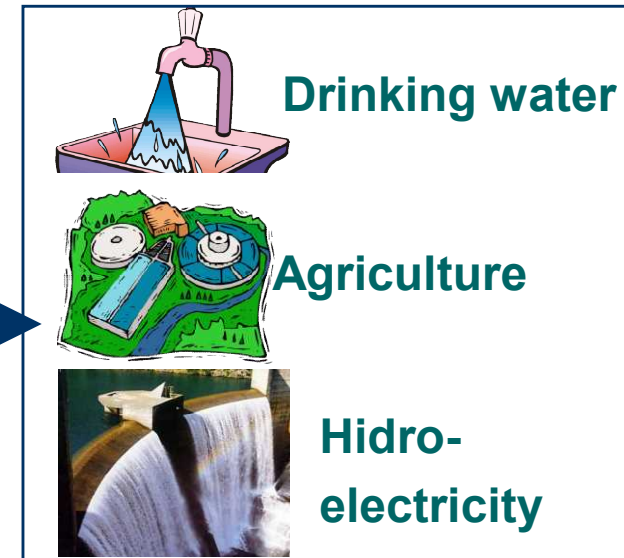


Multiplicity of topics and data producers

Water resources



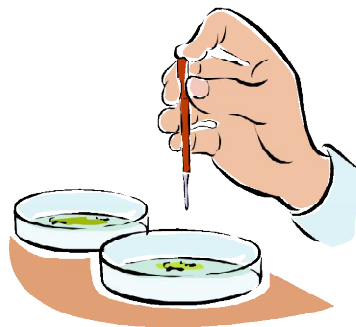
Main uses



Biology



Laboratory analysis

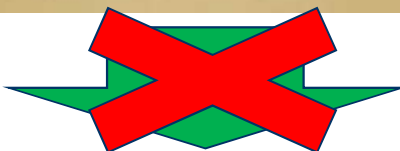


Monitoring quantitative and qualitative aspects

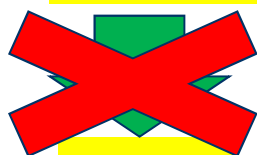
Existing situation related to data management

- Many topic to dealt with in the basin (hydropower, irrigation, mining, water supply and sanitation, flood management, ...)
 - The data to elaborate necessary information is produced/managed by various organizations
 - Information is **fragmented, incomplete dispersed and heterogeneous** way
- => need efforts to rationalize and make this information readable, easily accessible and available in order to produce useful information**

Consequences of lack of easy access to data



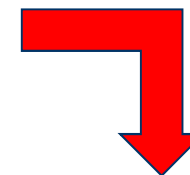
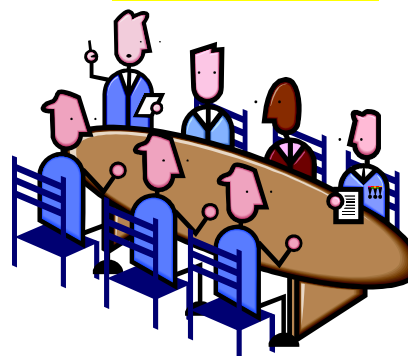
Information Knowledge



Public

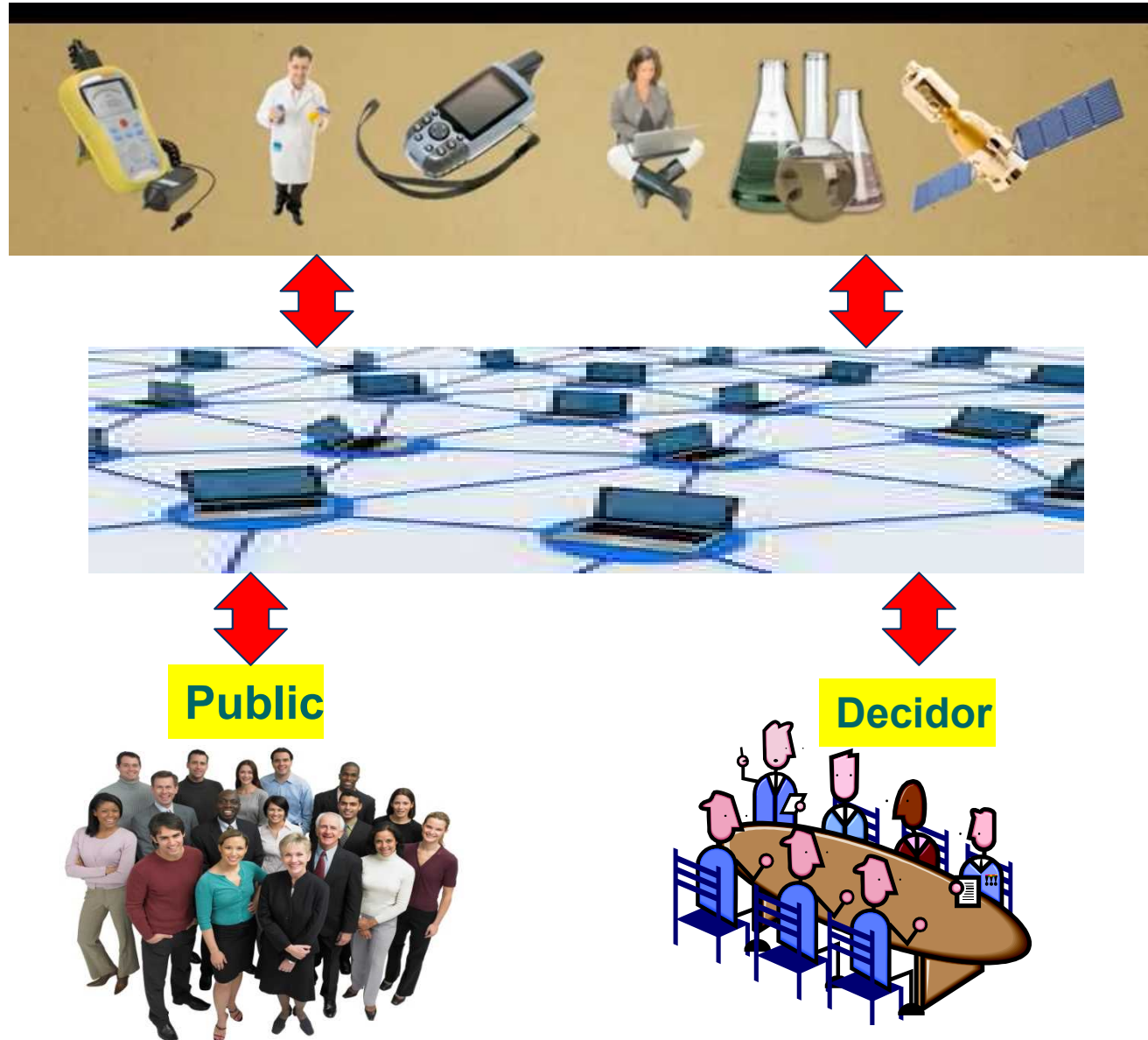


Deciders

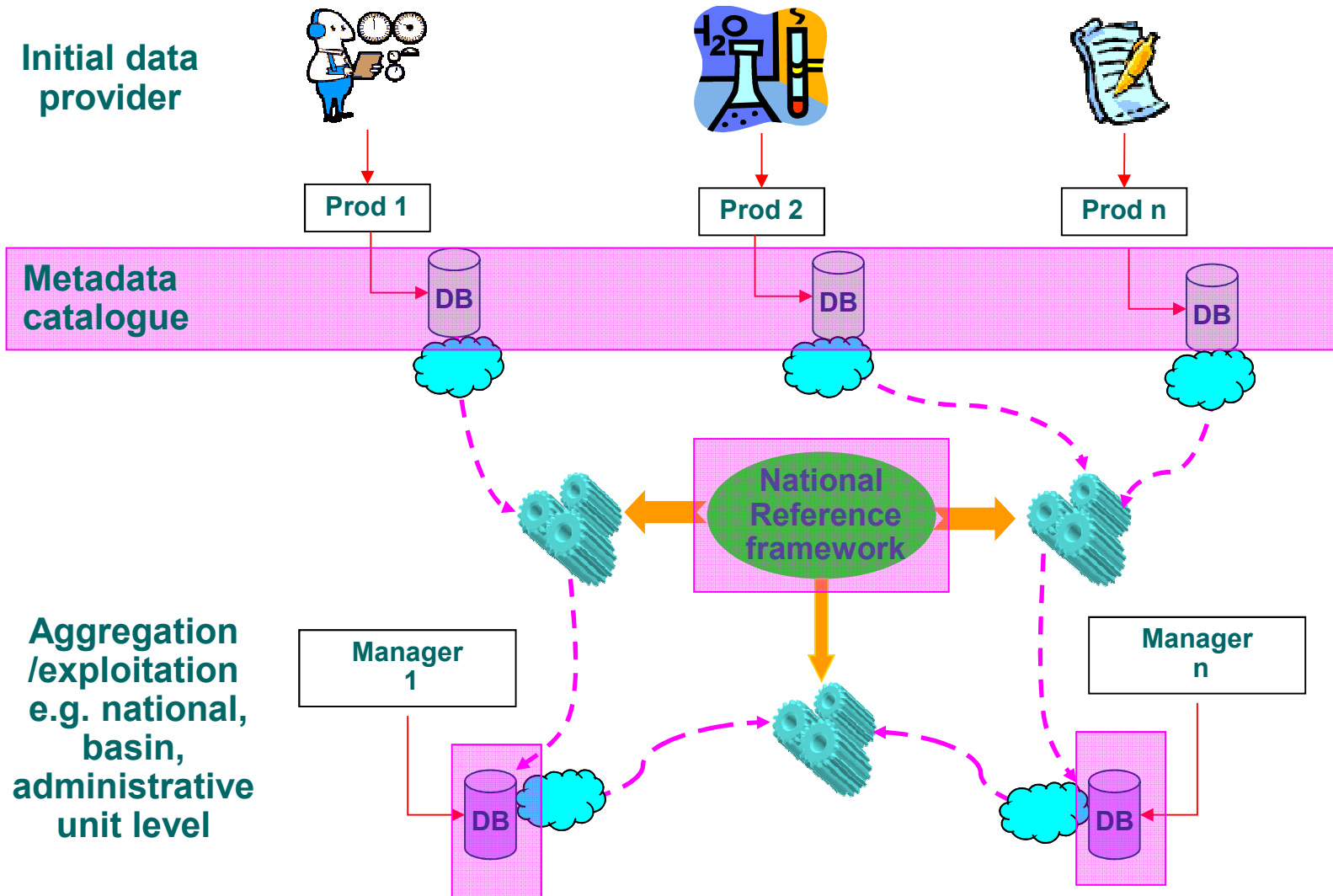




Developing networks of data exchange between actors

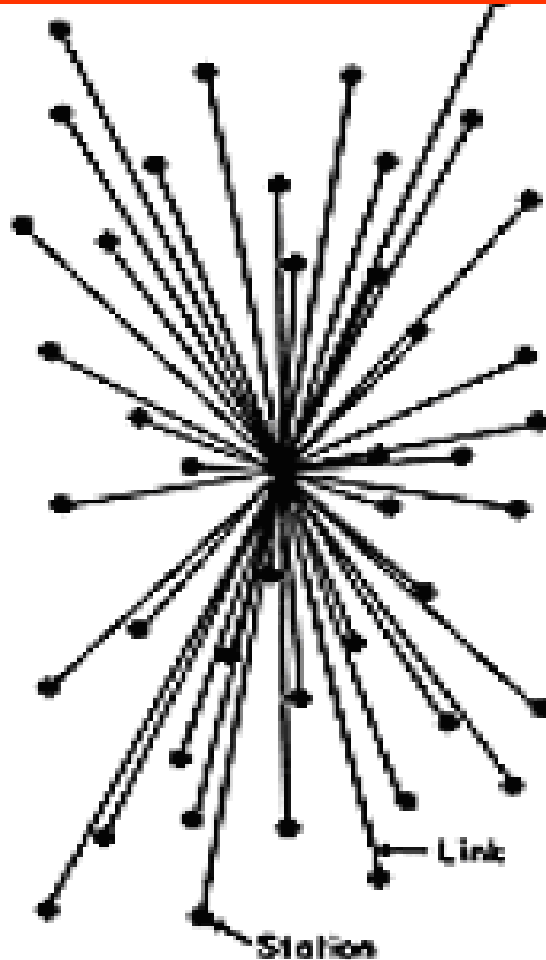


Through a collaborative approach of data management (a tendential scenario)

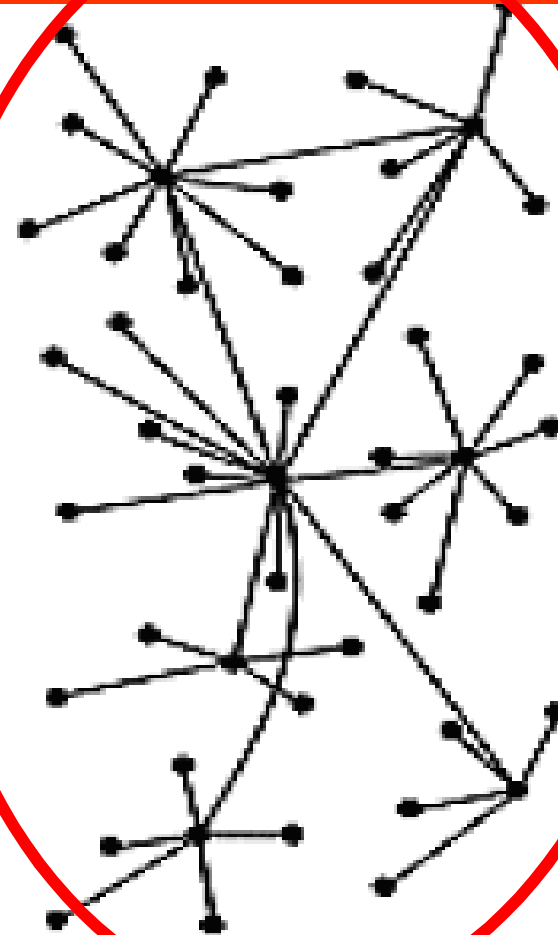




2 main scenarios



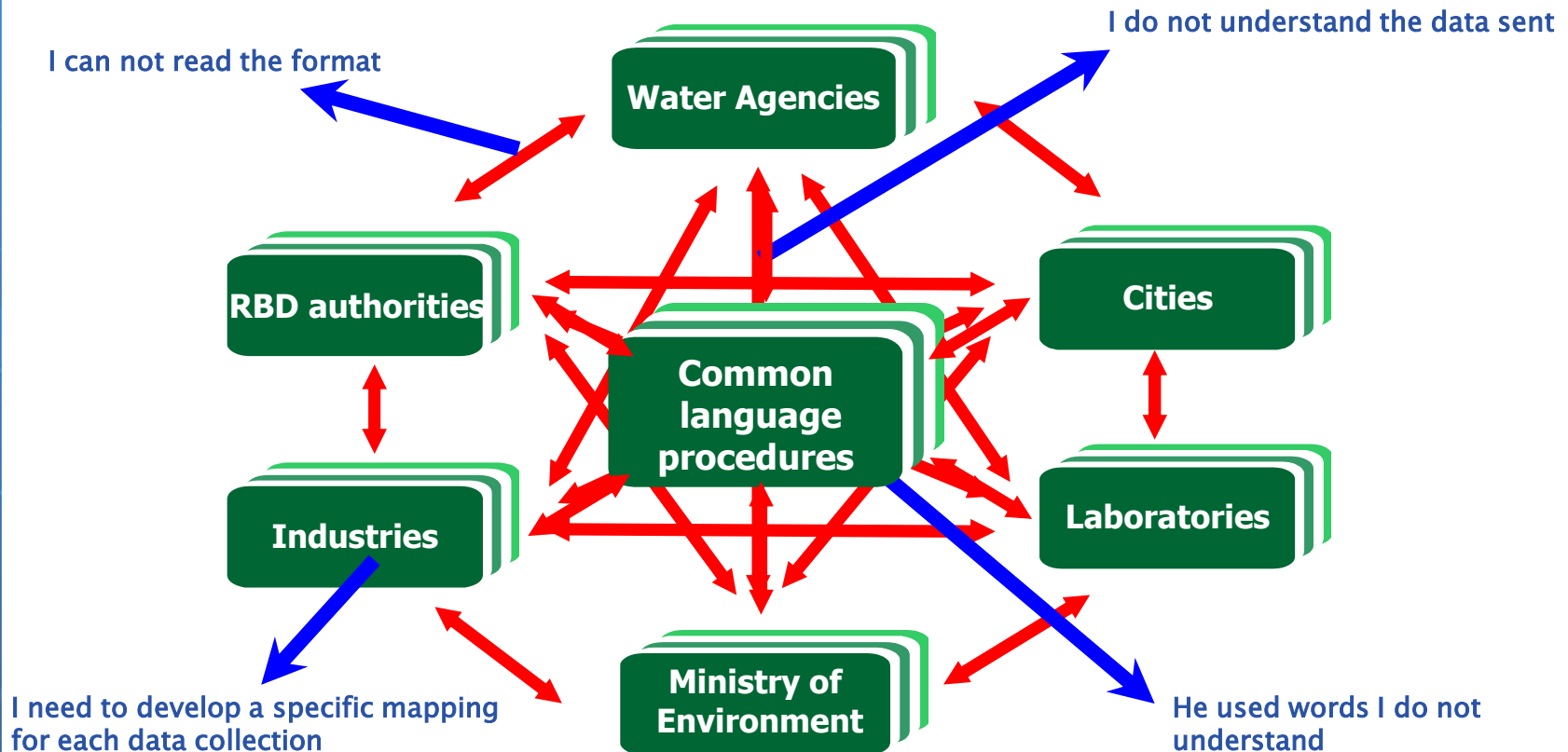
**Centralised
System for all topic (ex: Basin BD)**



**Decentralised
and collaborative system
(i.e. per topic)**



Some difficulties encountered with data exchanges

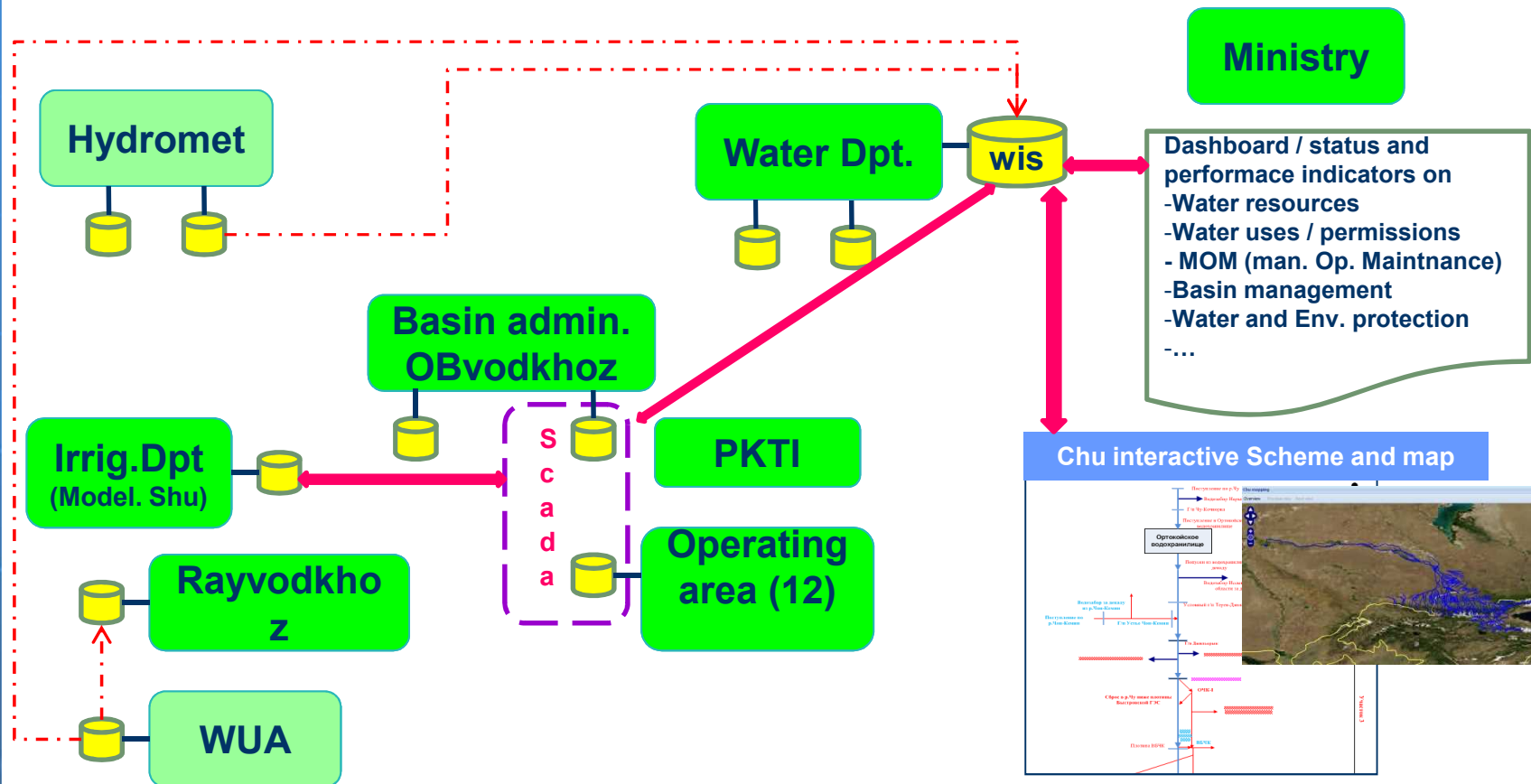




Some study cases



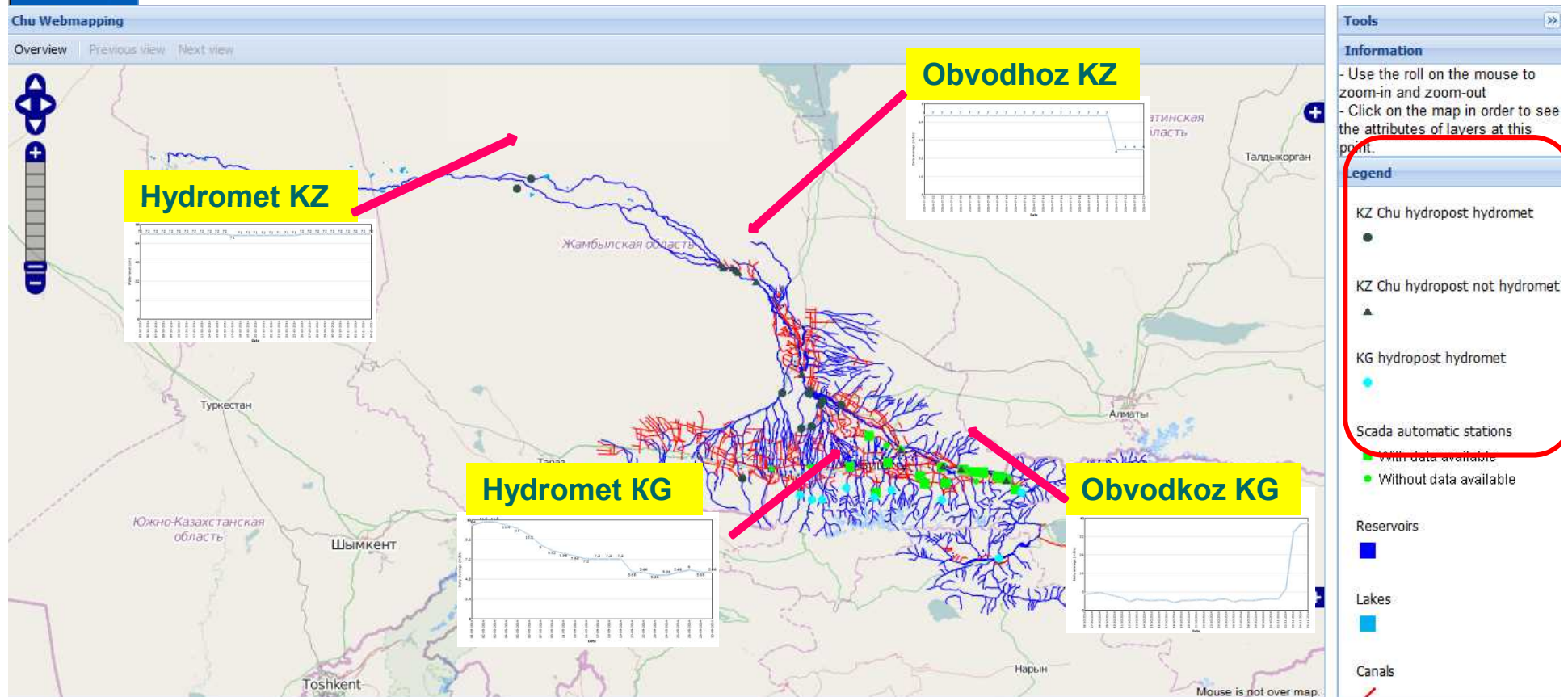
Application to the Chu Basin (surface water QTT data)



Common language
Common definitions/ codes/limits(GIS)/procedures for data exchange

Example of the SDC/IMoMo project Through a transboundary basin network of partners sharing data

- The Chu basin web mapping application prototype: a common tool for visualization of water resource situation, regularly actualized by the partners at transboundary level



<http://37.187.128.205/webmapping/ca/chu/>

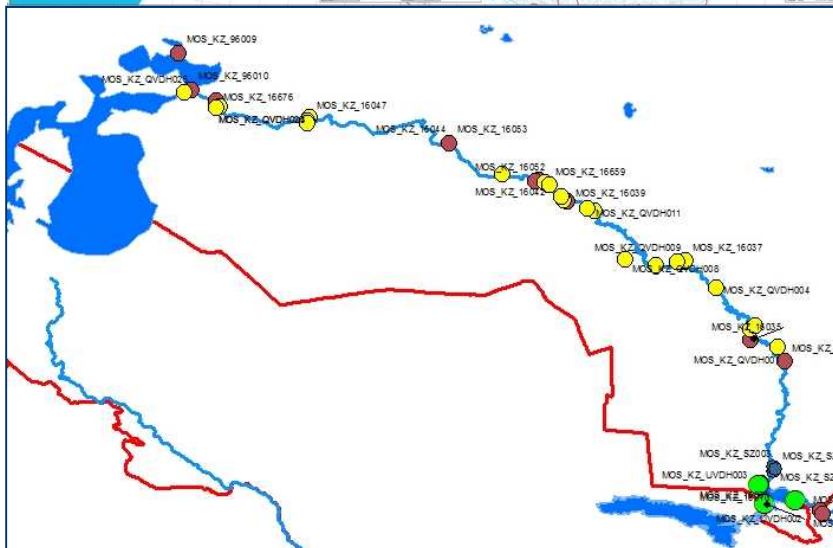
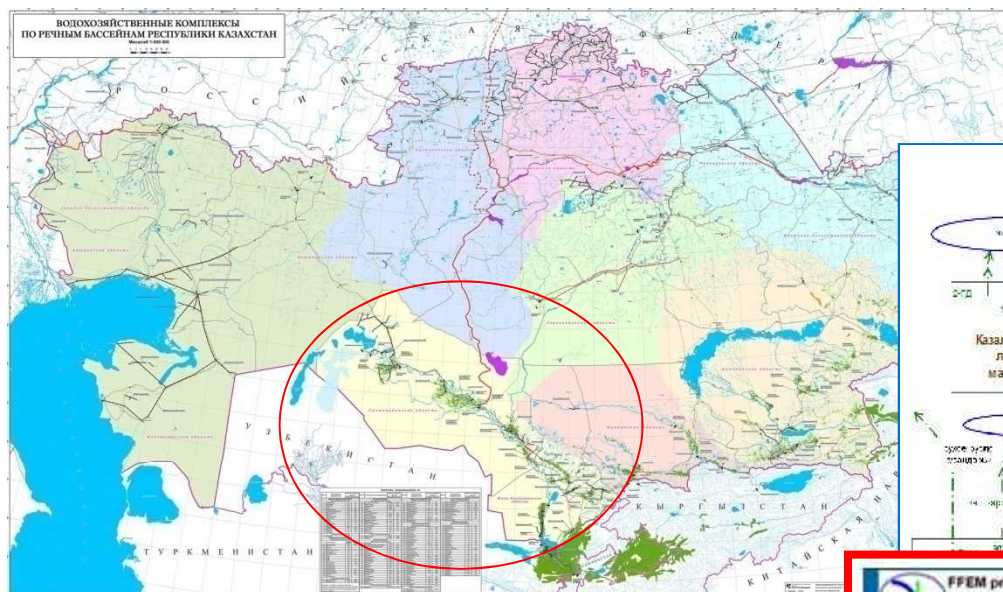


International
Office
for Water

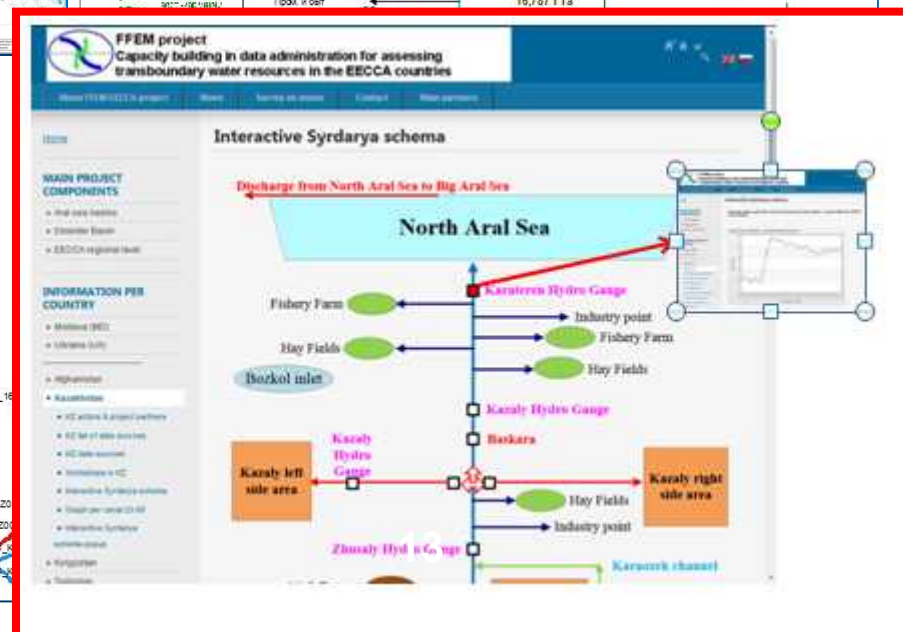


Specific action in Kazakhstan

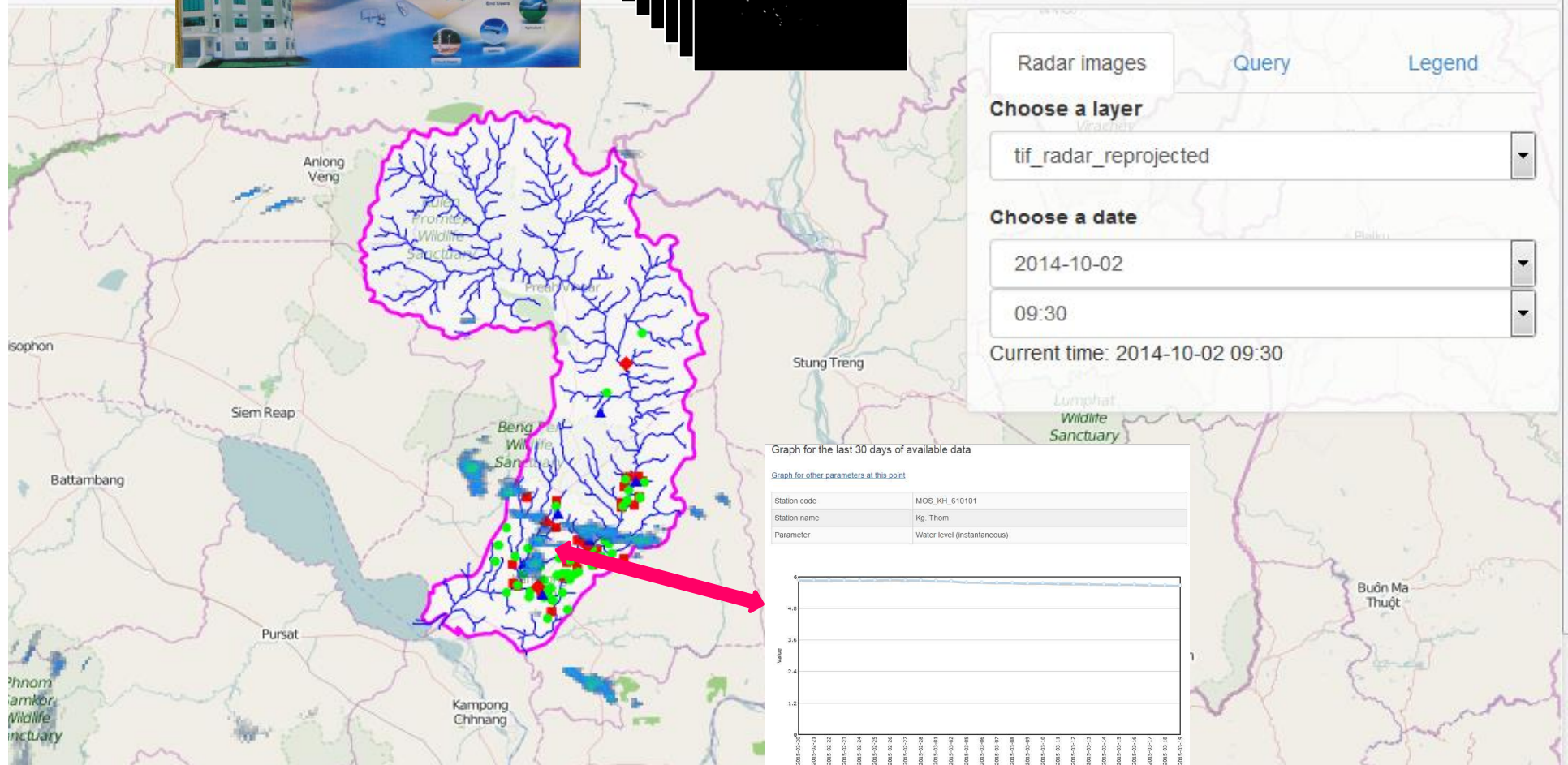
Reinforcing water information system on the Syrdarya



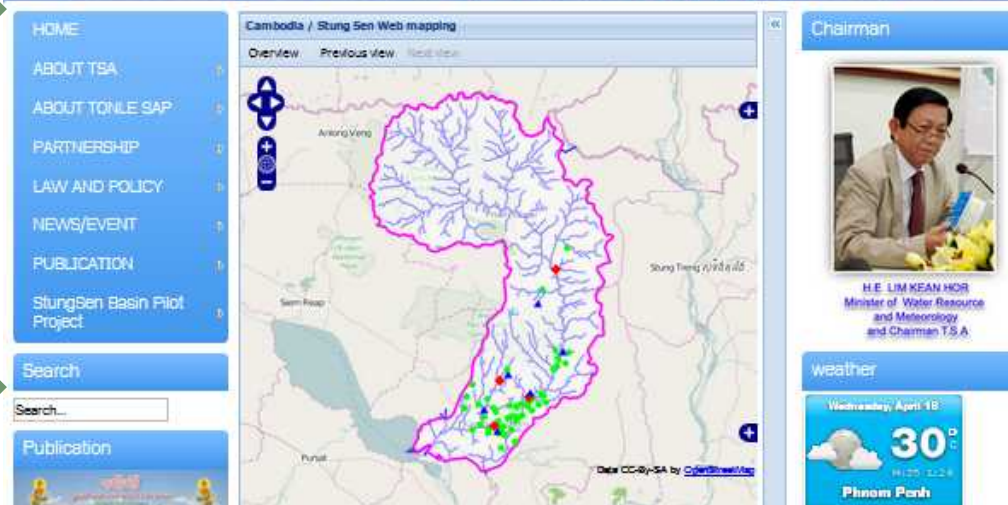
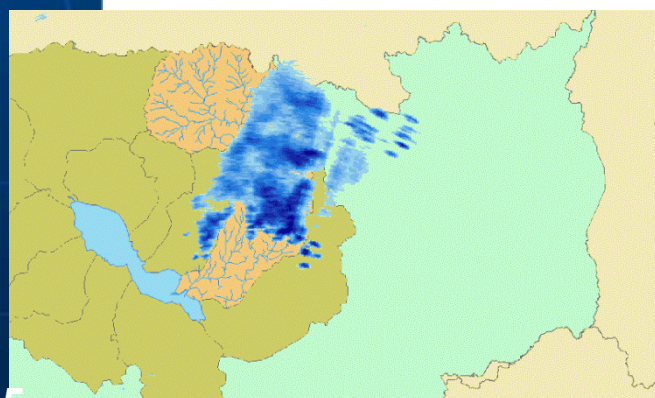
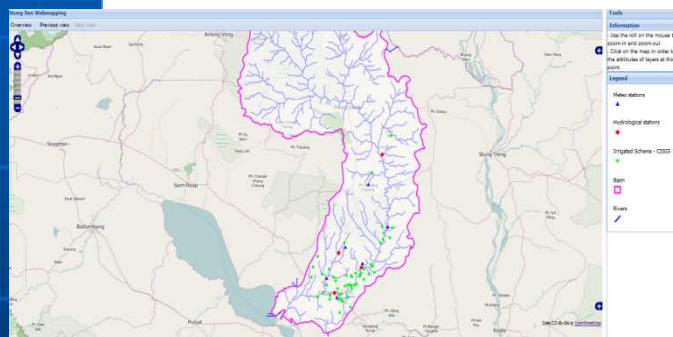
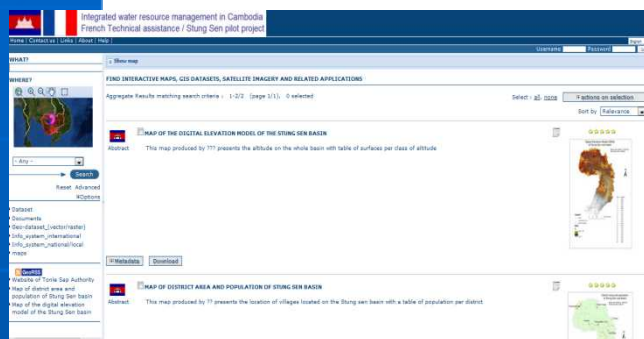
Syrdarya Scheme



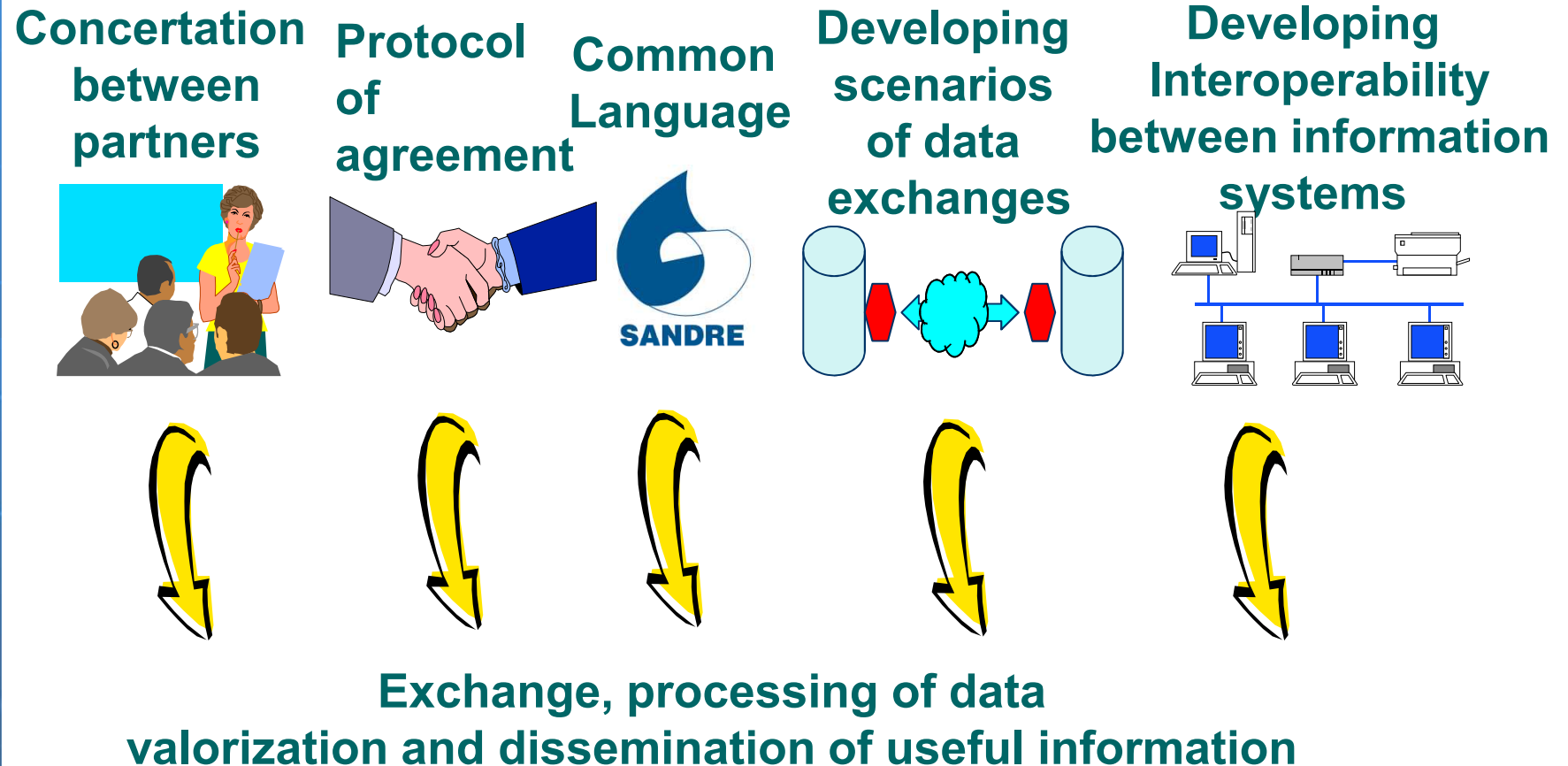
CAMBODIA: Example of Integration of monitoring station data and radar images



Cambodia: Support to data management and integration of tools in the Tonle Sap basin Authority portal



Global methodology





International
Office
for Water



Thank you for your attention

For more information

Paul HAENER
International Office for Water
FRANCE

p.haener@oieau.fr

