

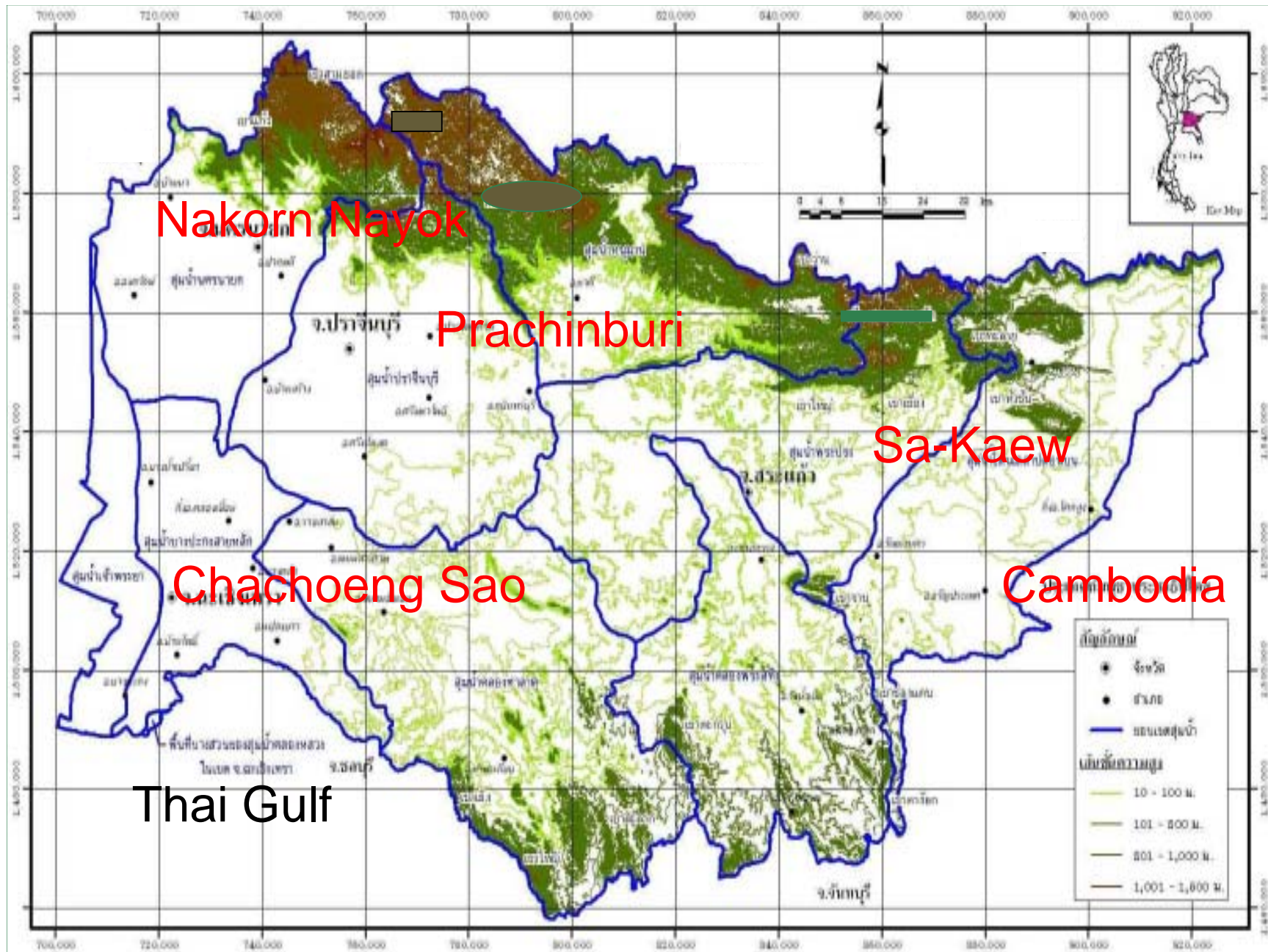
# New Phenomena on Water Resource Management of Bang Pakong – Prachinburi – Tonelesap River Basin During 1999 – 2004

By

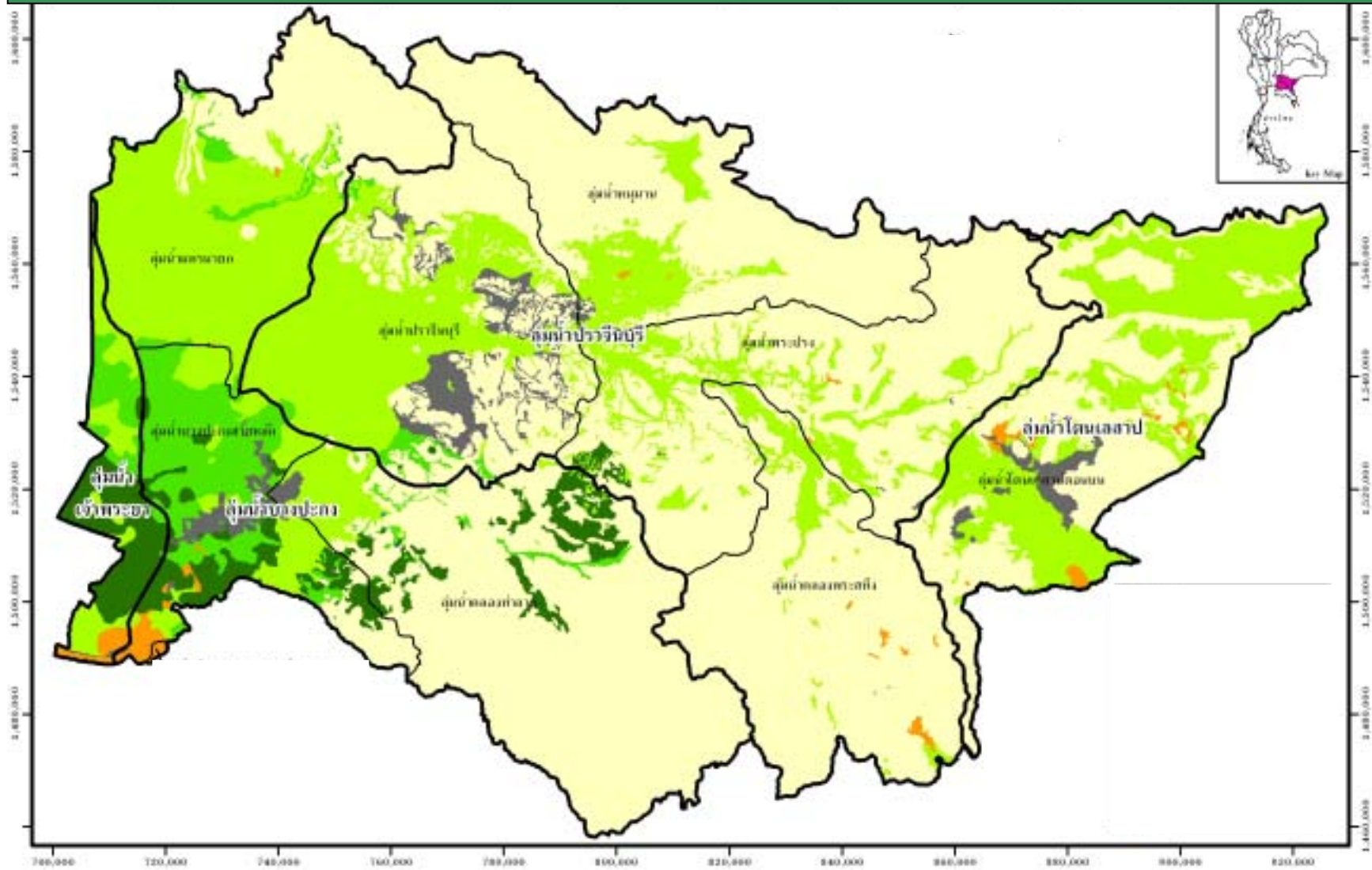
Mr. Chamroon Suaydee

Chairman of  
Bang Pakong – Prachinburi – Tonelesap River Basin Committee  
Thailand





# Plantation Area

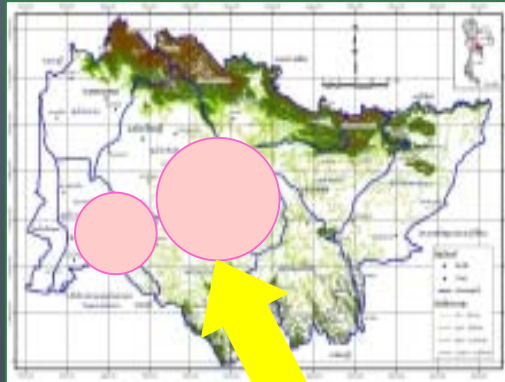




4 National Park  
is the most significant water source

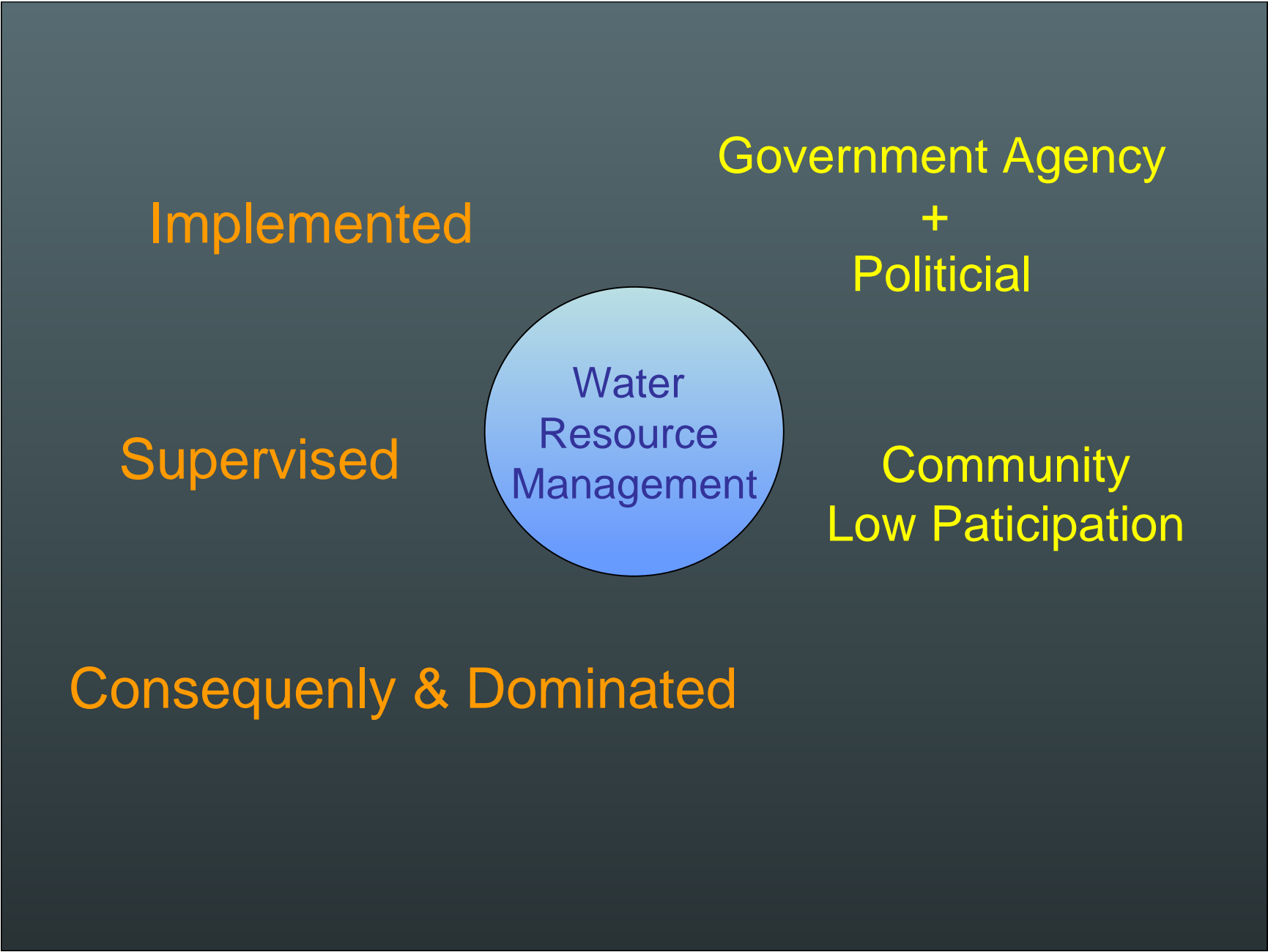
8,489 cu.m runoff water

307 km. Length of Bang Pakong River



At least **15 %**  
increased water demand  
In 2022

Industrial Zone



Implemented

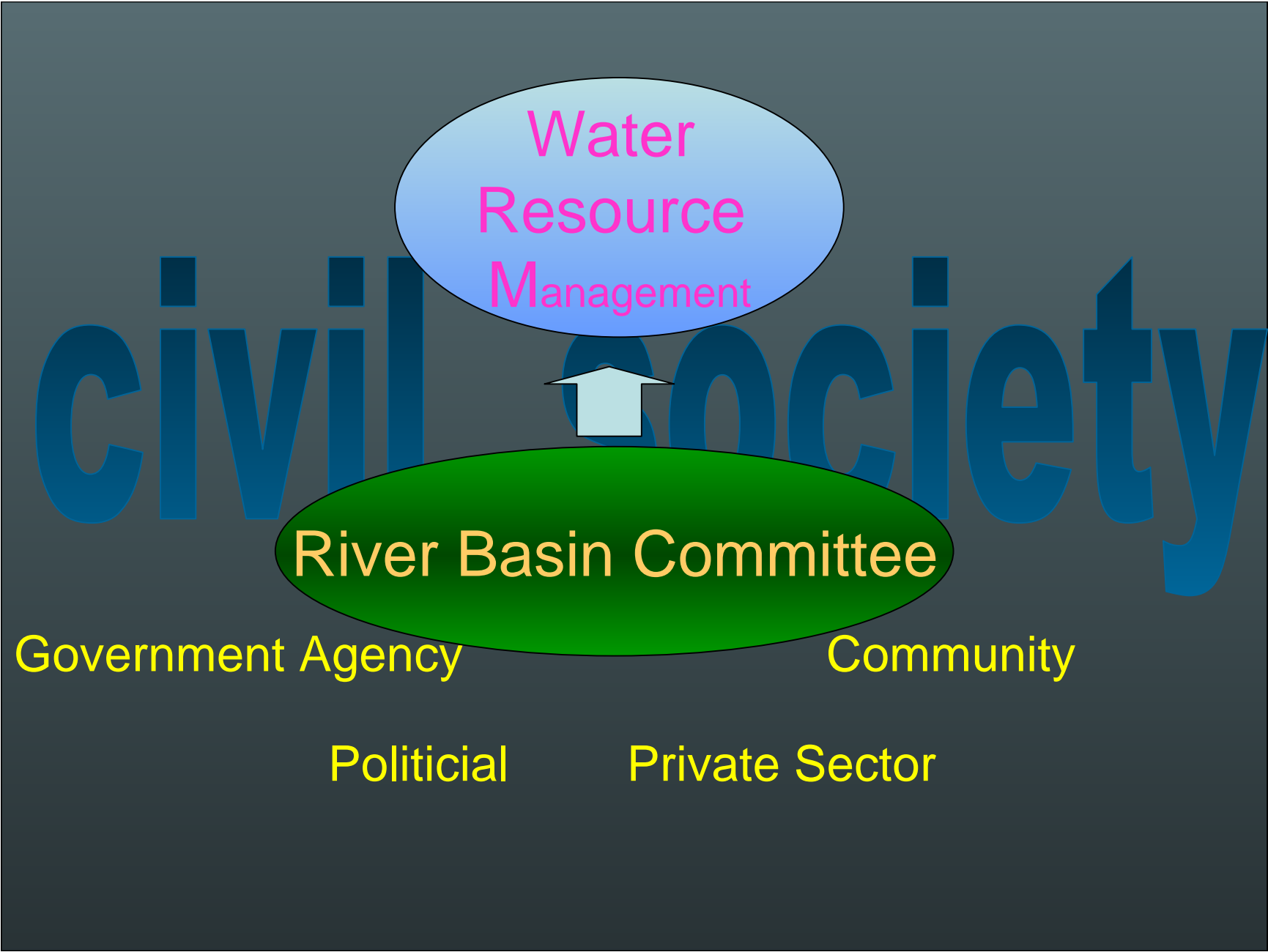
Government Agency  
+  
Political

Supervised

Water  
Resource  
Management

Community  
Low Participation

Consequently & Dominated



Water  
Resource  
Management

River Basin Committee

Government Agency

Community

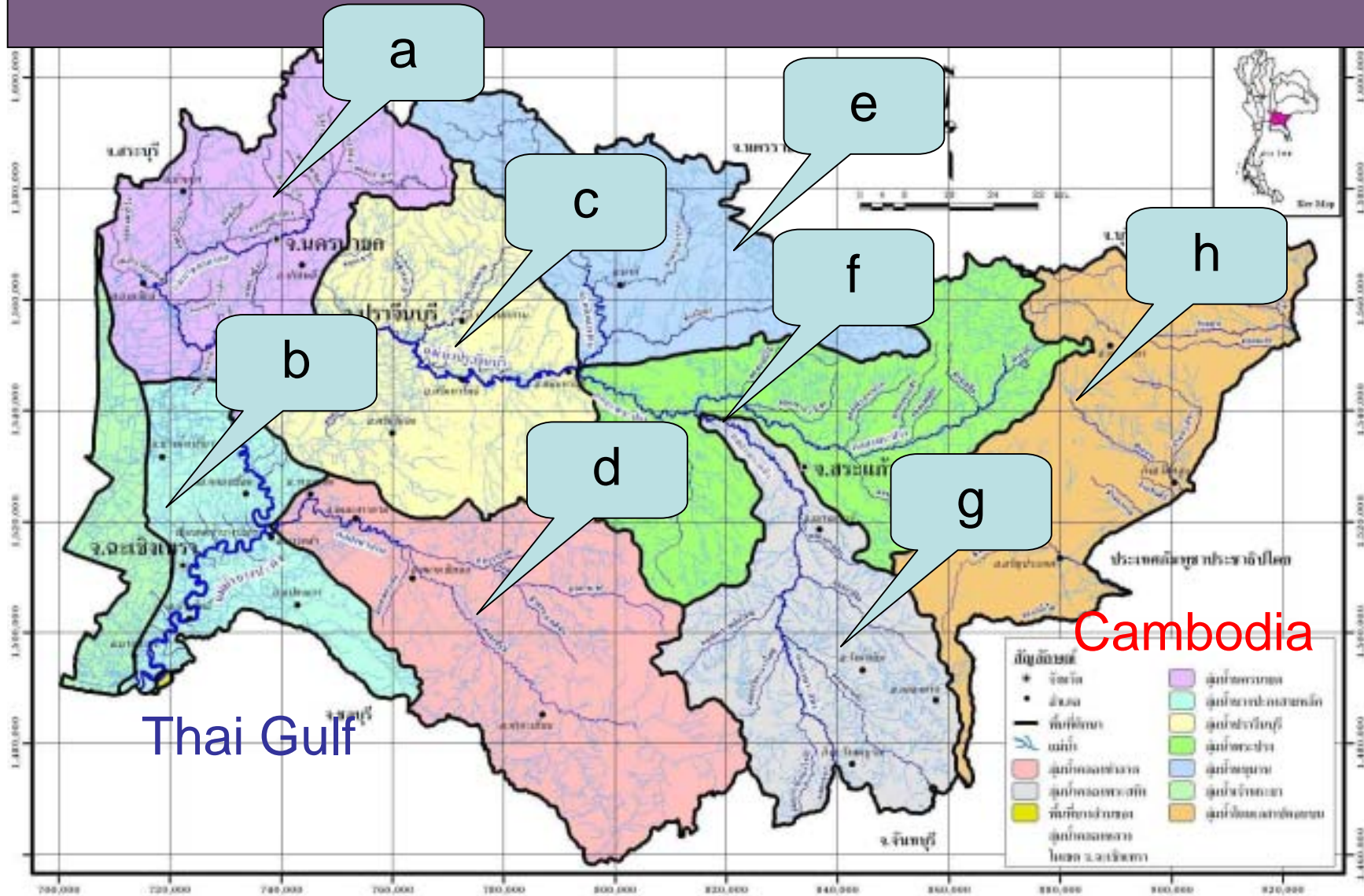
Political

Private Sector

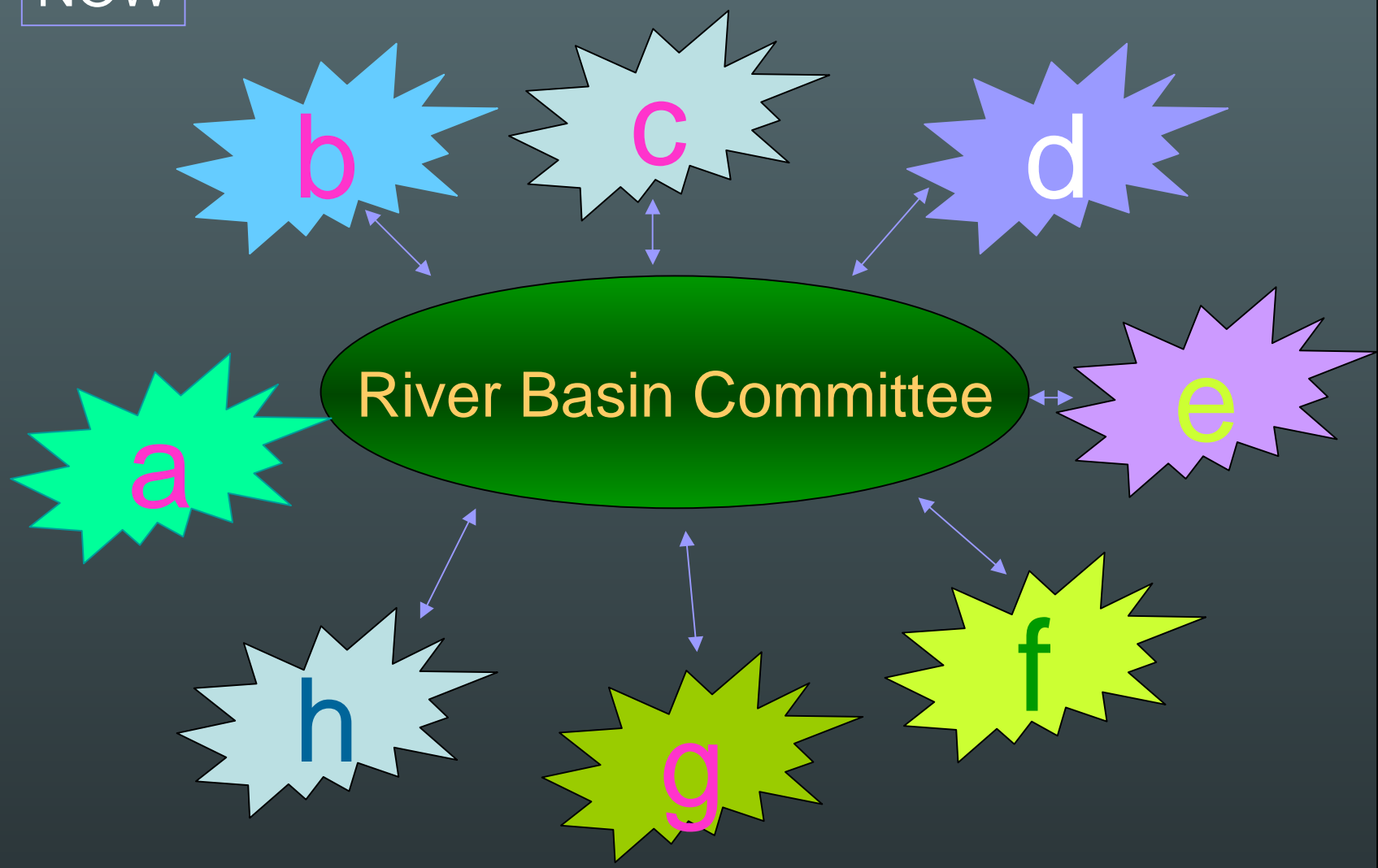
civil society



# 8 River Basin in Area



NOW



# Factor & Situation

- Political reformed  
by Constitution issueing
- Economic reformed
- Bureaucratic reformed
- Education reformed

## How affected water resource management today ?

- Department of Water Resources was established
- Committee of Water Resource were organized in 29 river basins & In many river basins
- Co – operation to IWRM
- Alert of Civil Society to share interest in water resource

## New Phenomena in Bang Pakong River Basin

Communication process for Change

Several dialogues for information interchange

Caring & Sympathy

Arouse & Recognition in resource and  
Envelopment , toward persistence to  
Definite lind of authority

# Point to ponder

These new phenomena are good  
How to make it sustainable ?

Whether these new phenomena could be  
Applied in the international river basin and how ?

THANK YOU