

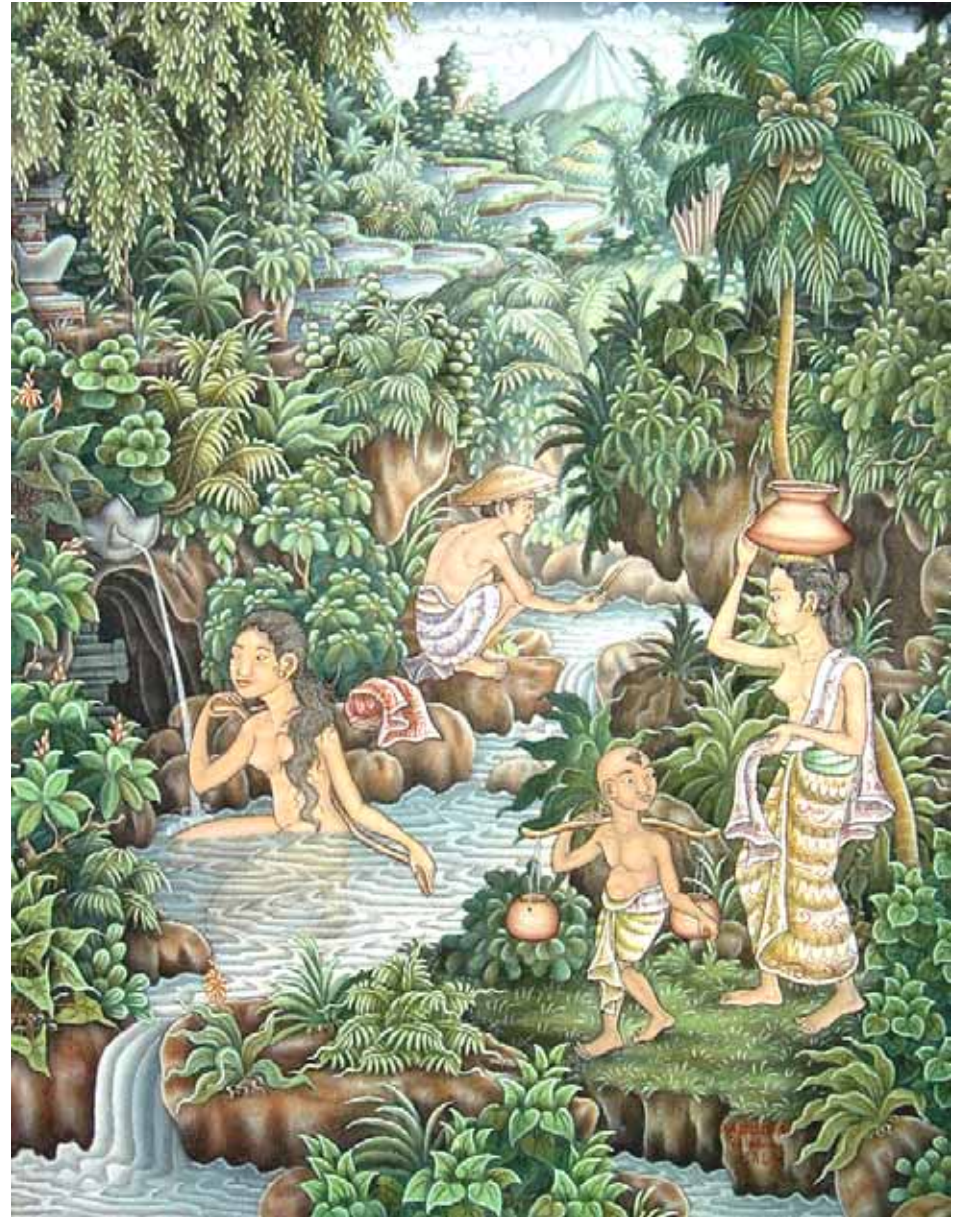


Establishment of APHW and its collaboration with NARBO

Toshikatsu Omachi, Dr. Eng.
Member of APHW Secretariat

Where we are living

- Warm humid monsoon region
 - Rich in precipitation
 - Typhoons/Cyclones
- Densely populated
- Paddy cultivation
- Tectonic zone
 - High volcanic activities
 - Narrow alluvial plain
 - Unstable soil



What we needed

- Establishment of hydrology and water management suitable for our region



- Establishment of Asia Pacific Association of Hydrology and Water Resources

History of APHW



Asia Pacific Association of Hydrology and Water Resources

HISTORY

- 2001 Dec. Preparatory Meeting in Tokyo
- 2002 Sept. APHW was established
- 2003 Mar. 1st APHW Conference in Kyoto
- July 2004 2nd APHW Conference in Singapore
- 2006 3rd Conference will be held in Bangkok



Outline of APHW

1. Aim

- Exchange of operational knowledge and experience
- Promotion of research and education

2. Activities

- Promotion of hydrological studies in Asia Pacific region.
- Research on water utilization and management methodologies.
- Organization of conferences and workshops.
- Establishing education program.
- Sharing of data and information.
- Publication of journal.

3. Membership and Fee

- Open for individuals and institutes.
- No membership fee

4. Organization

- Secretary General (SG) is the only official post of the Association.



aphw@wrcs.dpri.kyoto-u.ac.jp

APHW: its Motivation

Conditions in Asia and Pacific are not adequately reflected in hydrology developed in Europe and North-America

- EXAMPLE : “World Water Vision” presented by World Water Council in 2000
 - Its major focus is placed on water issues in arid and semi-arid regions such as north and west Africa, Middle East etc., which are of interest mainly to Western countries.
 - Almost no description about issues of Too Much Water (flood) and Water Cycle in Paddy Cultivating Regions.



- We should appeal water issues particular to Asian region more systematically and more effectively to the world

Our Task

- Enhancement of hydro-meteorological observation & compilation of data
- Accumulation and exchange of knowledge and experience
- Theoretical assessment of practice in the field
- Application of theoretical considerations in the field
- Collaboration among operators (ROBs), administrators and academic researchers (APHW, etc.)

What APHW expects of NARBO

- Promote exchange and collaboration among academics researchers and experts in the field and administration.
- Share information and experience among academics and field.
- Promote operational/practical research.
- Application and verification of academic research outcome in the field.

What APHW can contribute to NARBO

- Input up-to-date result of academic research.
- Provide academic background to practical approaches.
- Generalization of practical approaches through theoretical consideration.



END