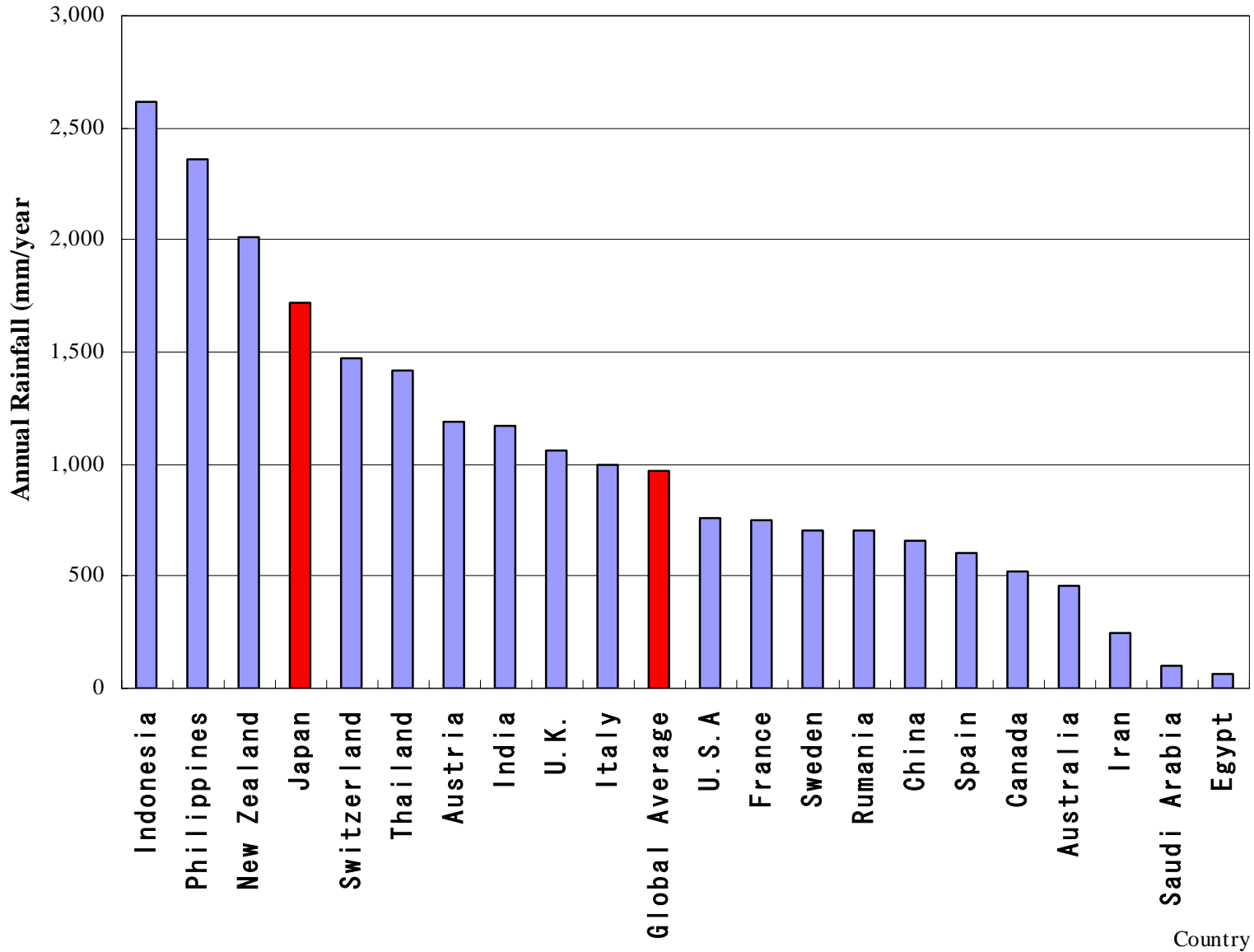


IWRM experience in Japan

— The case of Kiso River

Annual Rainfall



Available Water Resources

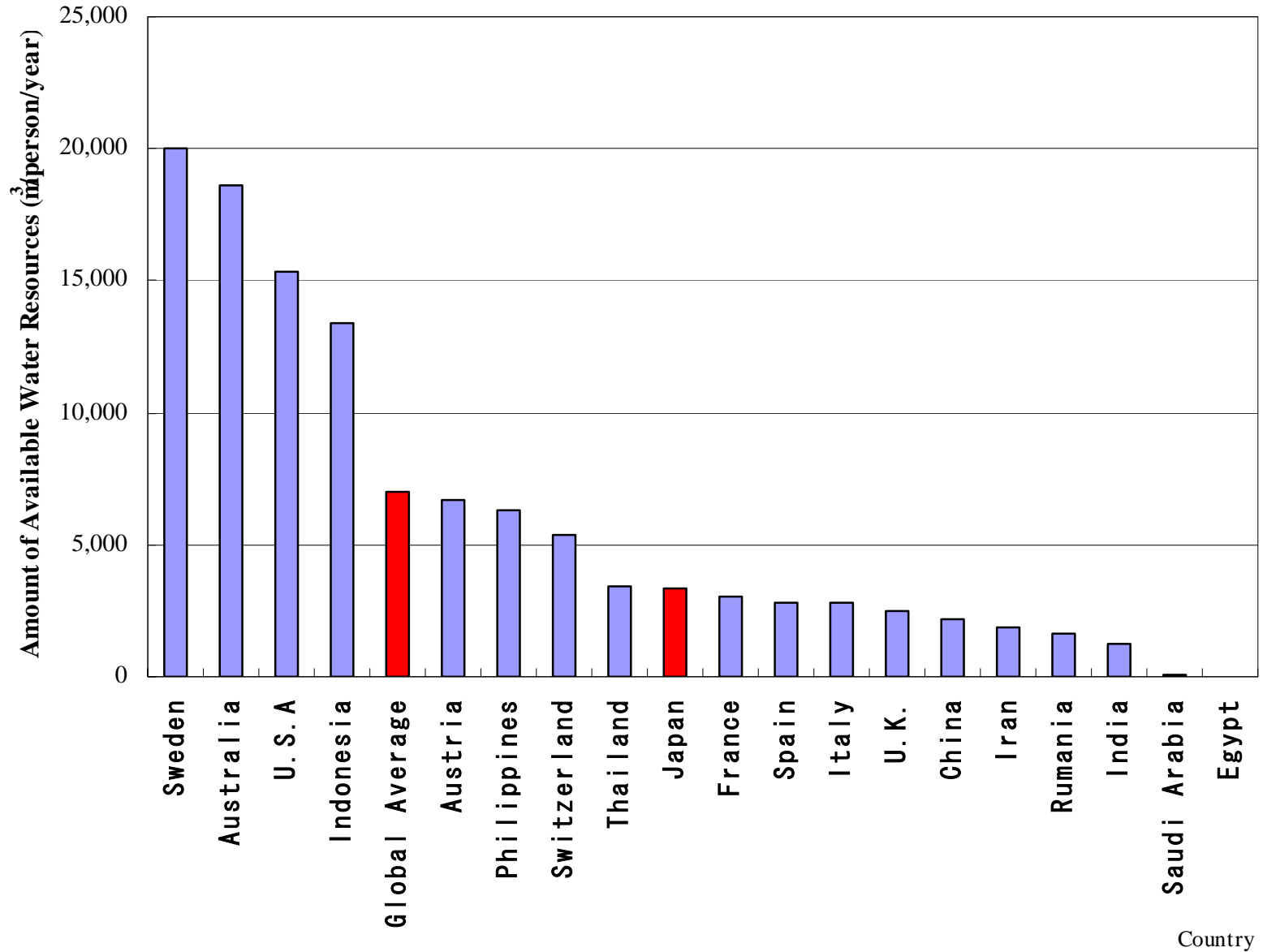
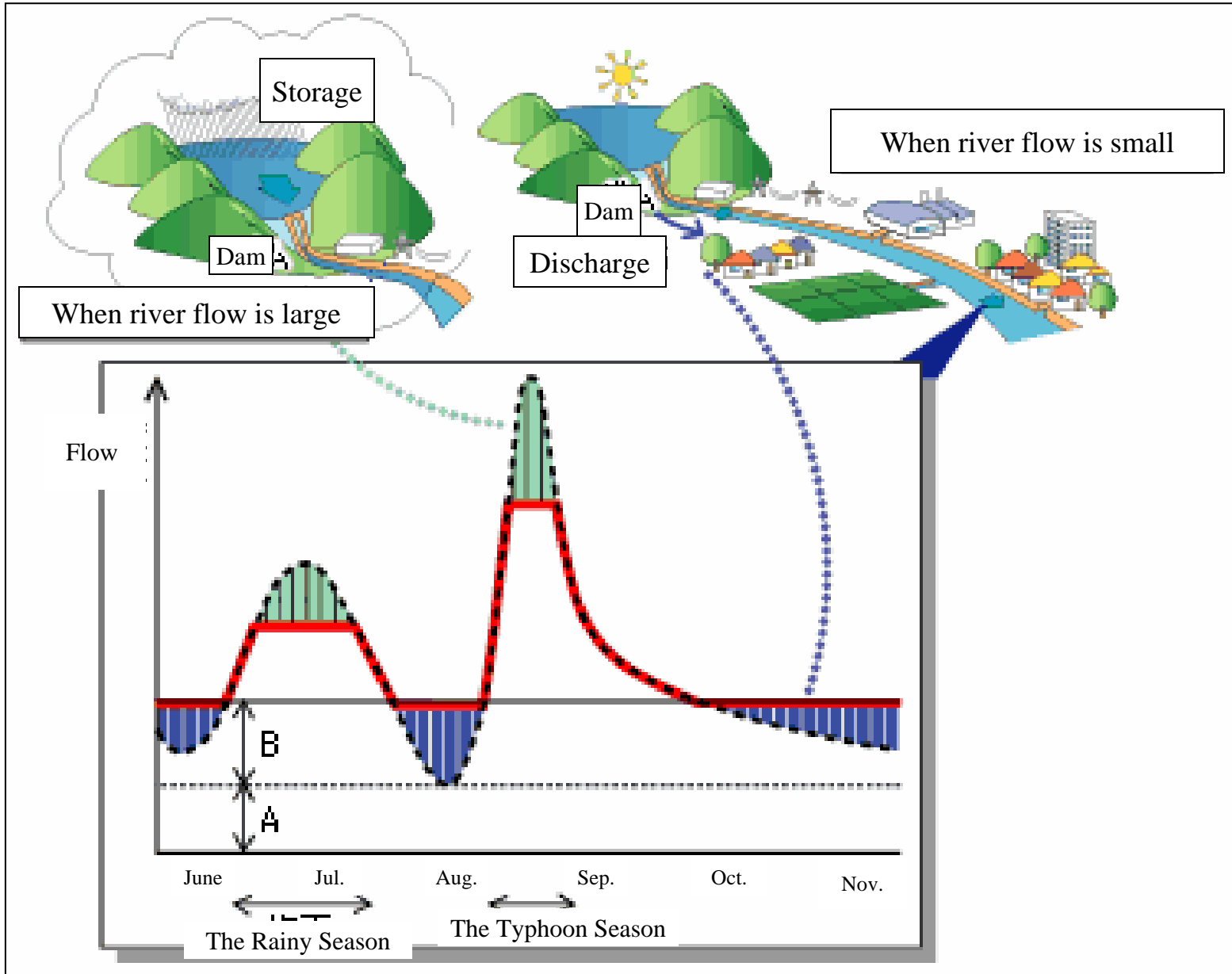


Image of Water Resources Development



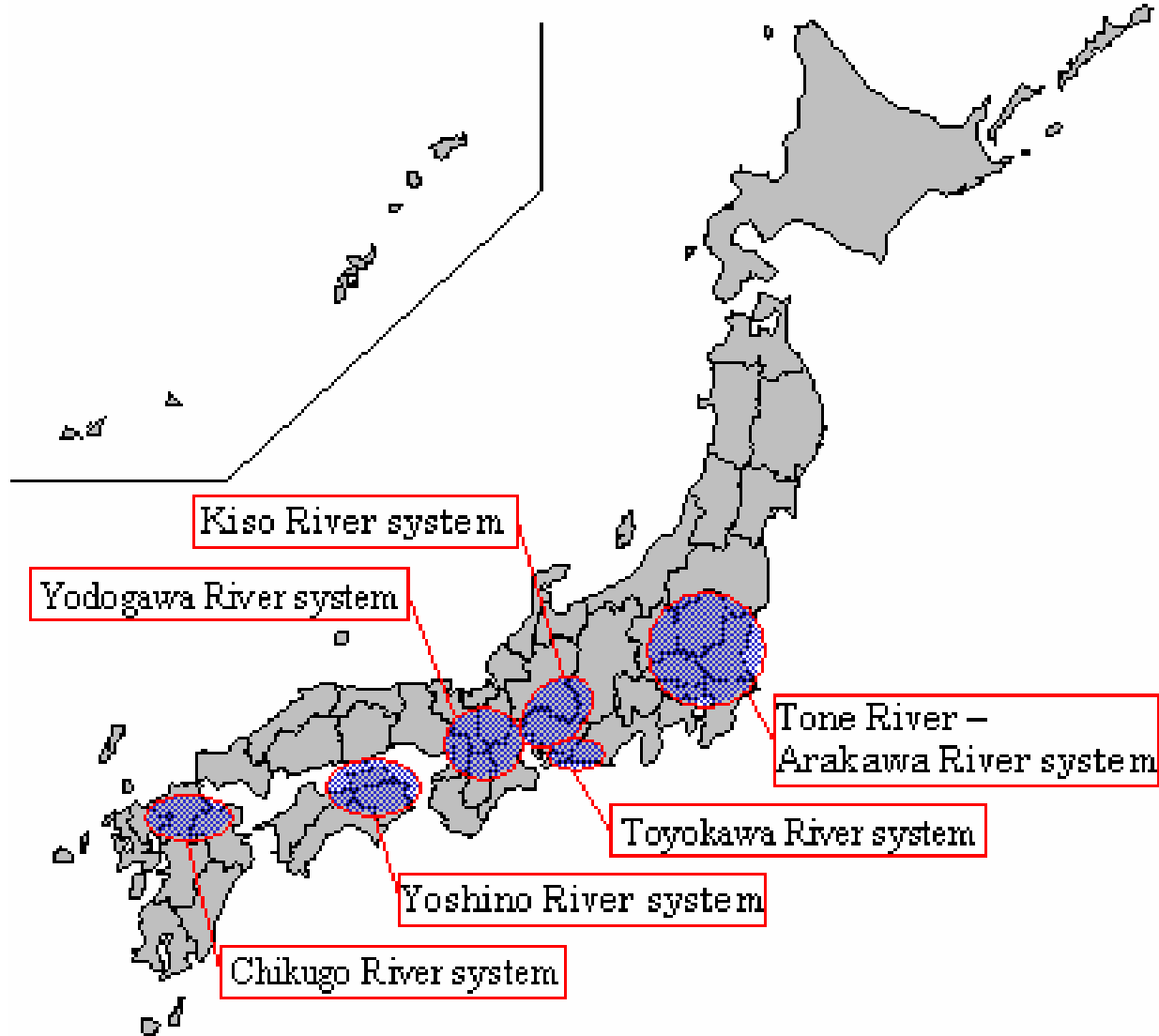
The River Law

- **The River Law was enacted in 1896 as a basic law on river management in 1896.**
- **Thoroughly revised in 1964, and amended in 1997.**
- **Current River Law is comprehensive law aiming at flood control, water supply and river environment.**
- **The Law provides river classification, river administrator, water right, river improvement plan, and so on.**

Water Resources Development Promotion Law

- **The Water Resources Development Promotion Law was enacted in 1961.**
- **For the purpose of securing water supply for regions with demanding needs along with the industrial development and population growth, and promoting integrated development and utilization of water resources .**
- **This law designates “water resource development river systems”.**
- **In each of the designated river systems, “the water resources development Master plan” has been made under the Law.**

The Water Resources Development River Systems



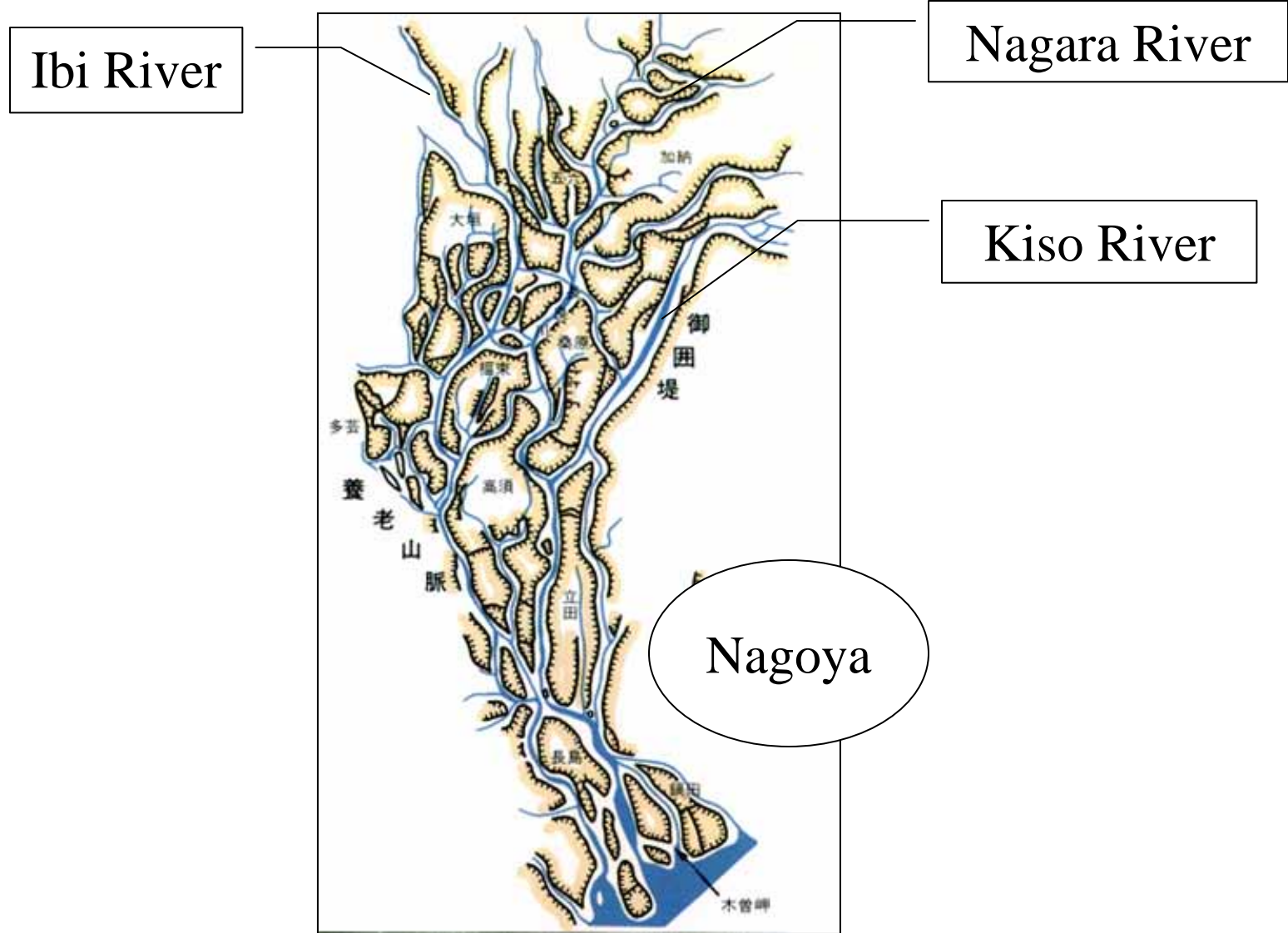
Water Resources Development Master Plan

- **The Plan includes**
 - **Target year**
 - **Forecasting water demand for domestic, industrial and agricultural use**
 - **Targets of water supply**
 - **Allocation of water supply for areas and sectors**
 - **Facilities needed for water supply**
 - **Others**

Kiso River System



Kiso River System



Kiso River System



History of Water Resources Development in Kiso River System

- **BC 3: Rice field development in Noubi plain.**
- **1600's: Irrigation canal development and Rice field development (about 1,000ha) in Kiso River left side.**
- **1800's: Irrigation canal development and Rice field development in Kiso River right side.**
- **Late-19th: Hydraulic power plant development.**
- **1950-1955: Irrigation canal development by pump at the upper reaches of Kiso River.**
- **1960-: water resources development for Domestic and industry water use.**

No Piped Water



Irrigation



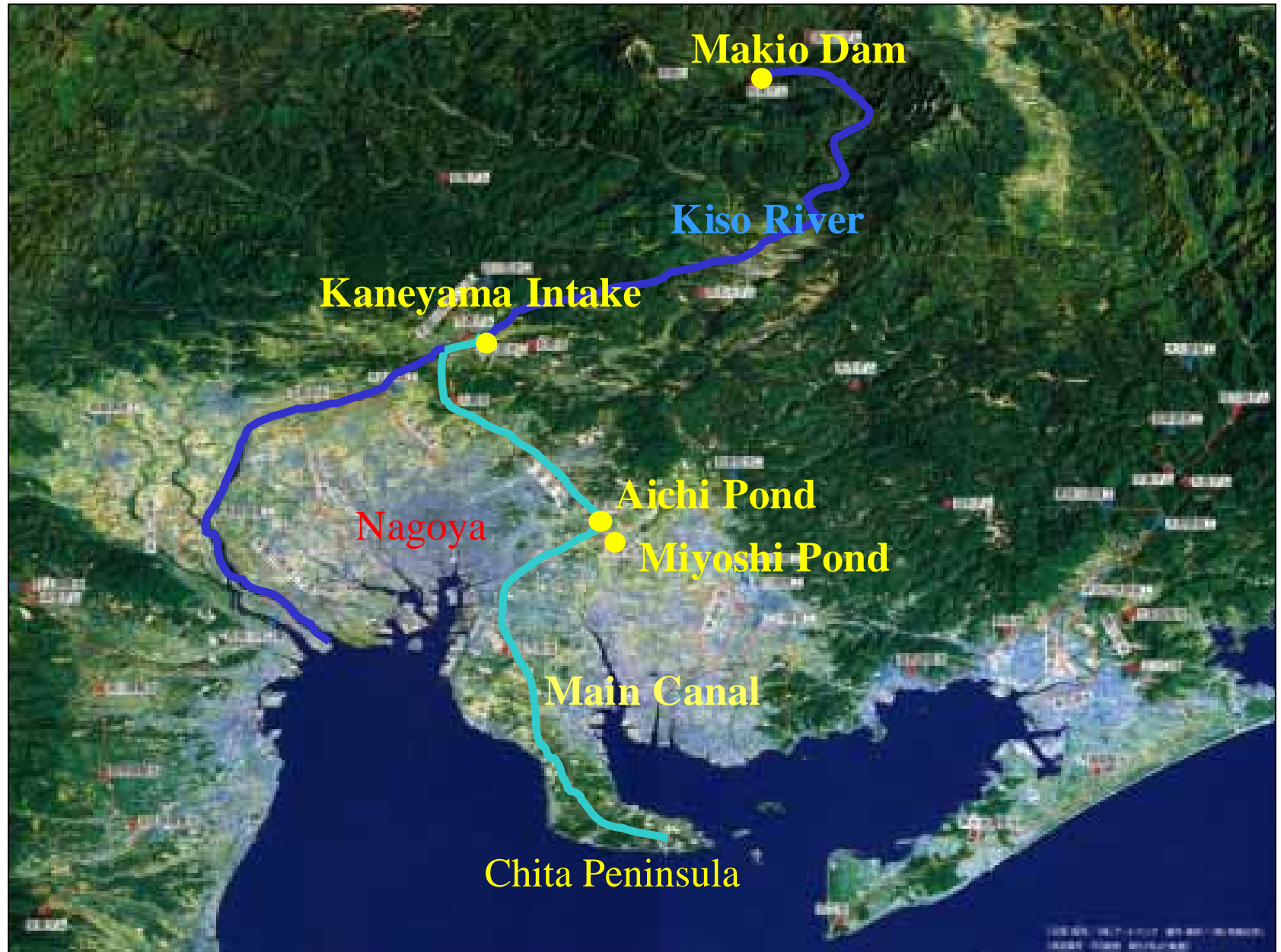
Irrigation



Characteristic of Aichi Canal Project

- **The Aichi Canal Project is the first integrated water resources development project in Japan aiming at irrigation, land development, domestic and industrial water supply.**
- **Aichi Canal Project is the first project which used the loan of the World Bank in Japan.**
- **The Aichi Canal Public Corporation built the dam, canal, facilities consistently.**

Outline of Aichi Canal Project



Makio Dam



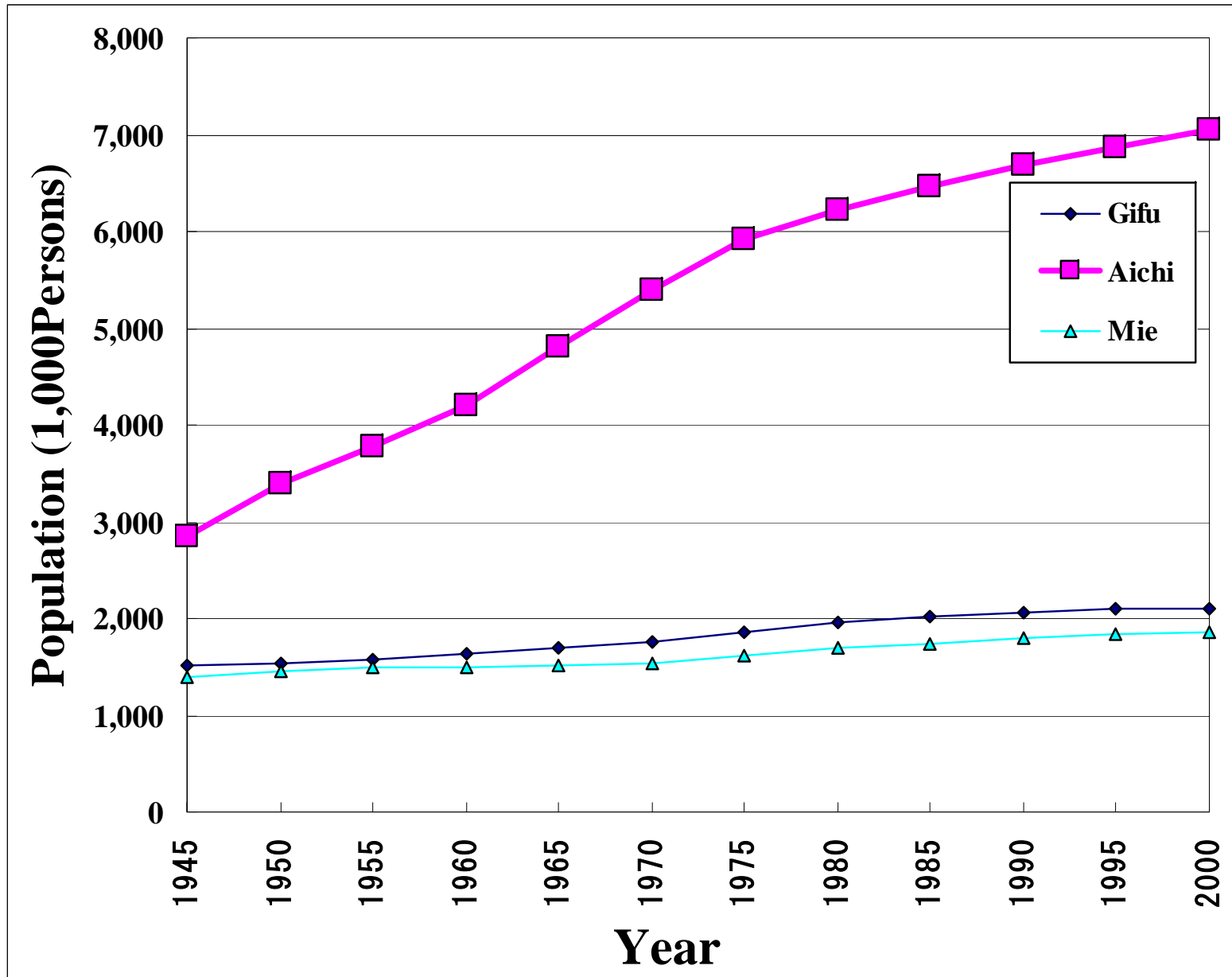
Main Canal



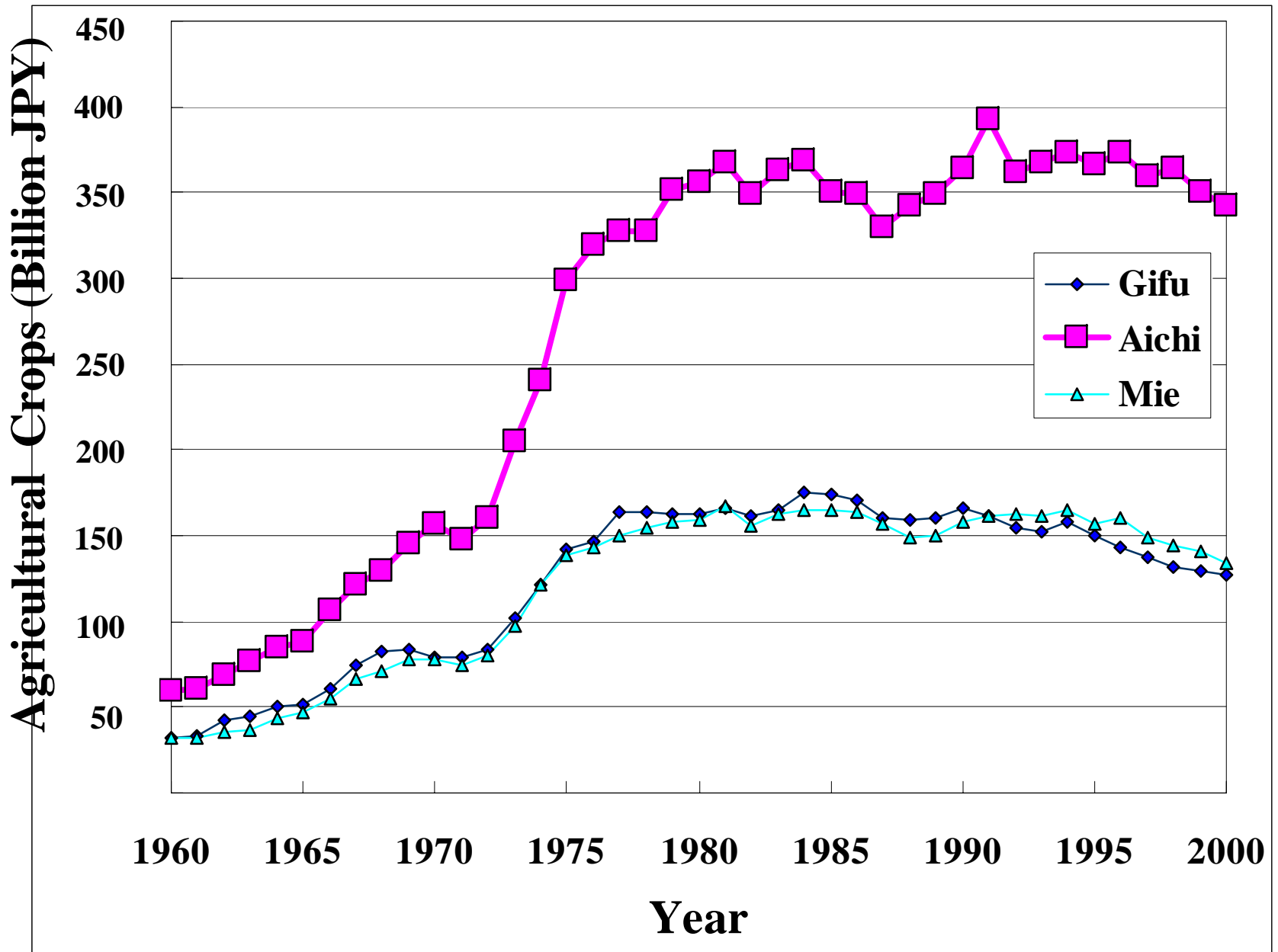
After the Aichi Project

- **1961: Completion of the Aichi Canal Project**
- **1965: Based on the Water Resources Development Promotion Law, Kiso River was specified to be the Water Resources Development River System.**
- **1968: Drawn up the Kiso River Water Resources Development Master Plan (Full-Plan)**
- **1968-Present: The IWRM projects have been undertaking on Full-Plan.**

Population



Agricultural Crops



Value of Industrial Shipments

