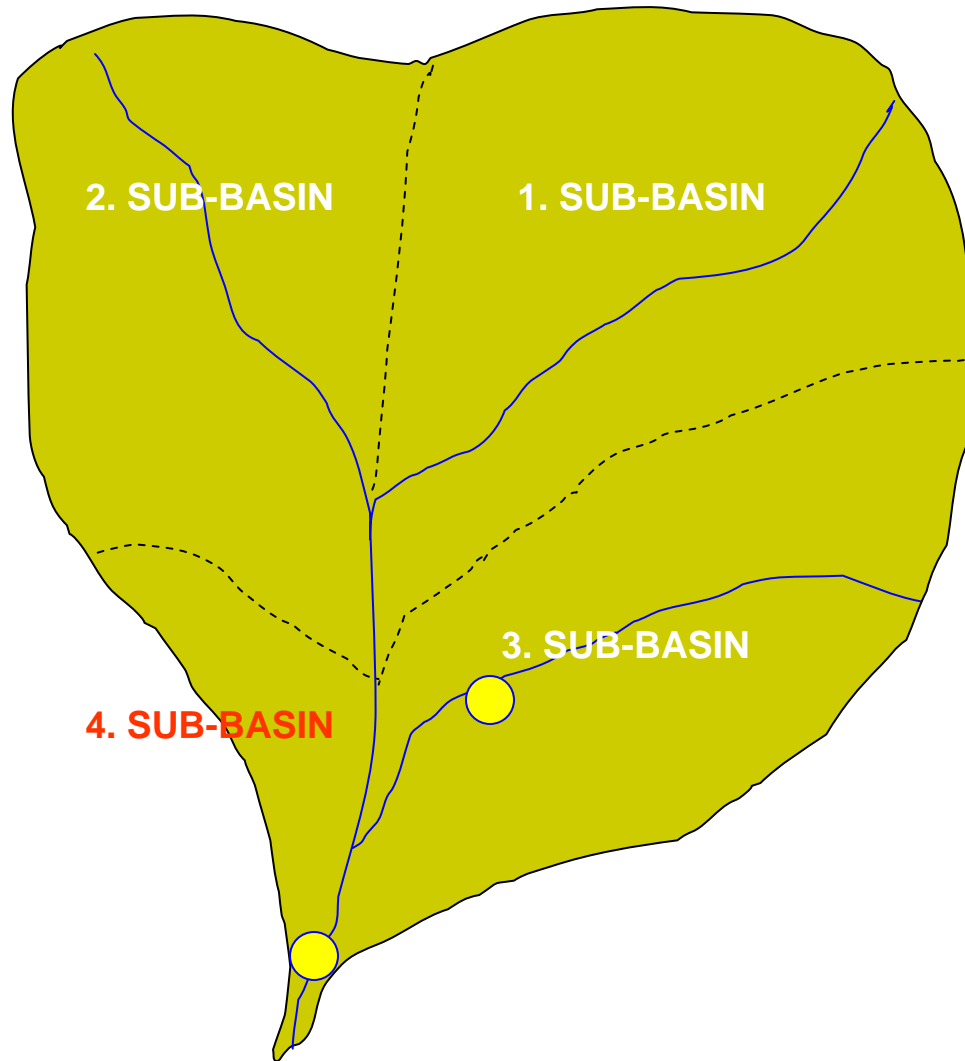


DESIGNING AN APPROPRIATE INSTITUTIONAL SYSTEM

GROUP 1



BASIN MAP OF “A”

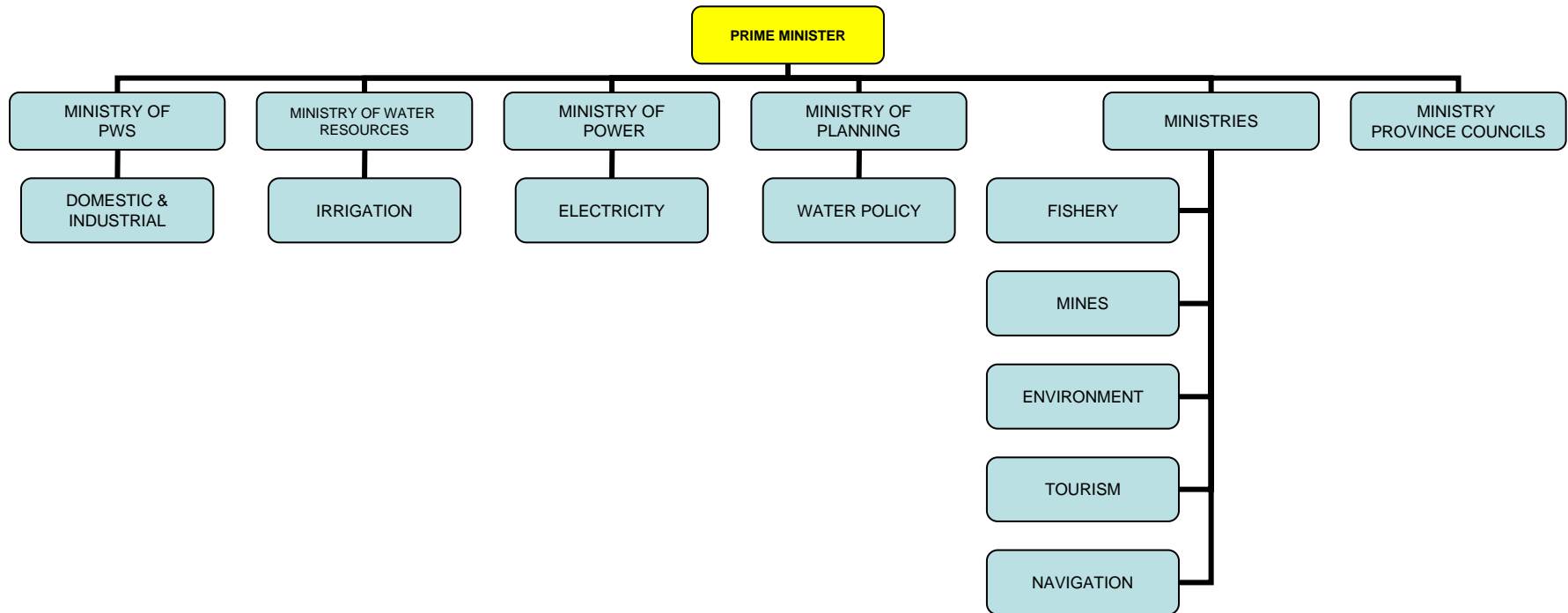


BASIN FEATURES

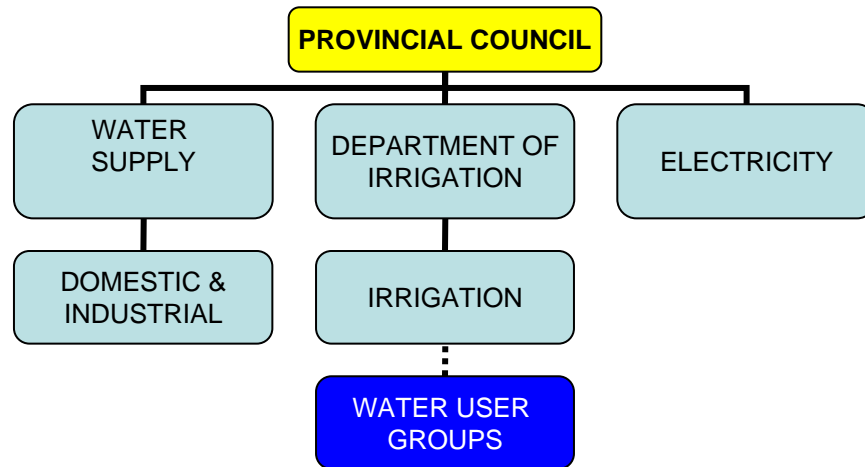
- FAST ECONOMIC GROWTH
- INVESTMENT IN NEW BUSINESS
- PEOPLE MIGRATING TO CITIES
- SOME GROUPS ARE RESISTANT TO CHANGES
- WATER IS GETTING SCARCE
- ENVIRONMENTAL DEGRADATION
- DEVOLVED SYSTEM OF GOVERNMENT
- NO COST RECOVERY IN CANAL IRRIGATION
- WATER POLICY INTRODUCED
- LOCAL LEADER IS PROPOSING INTER-BASIN TRANSFER OF WATER TO MEET THE INCREASING DEMAND

GOVERNMENT OF SAARCKIA

WATER SERVICES (EXISTING INSTITUTIONS)



GOVERNMENT OF SAARCKIA
WATER SERVICES (EXISTING INSTITUTIONS)
PROVINCIAL LEVEL

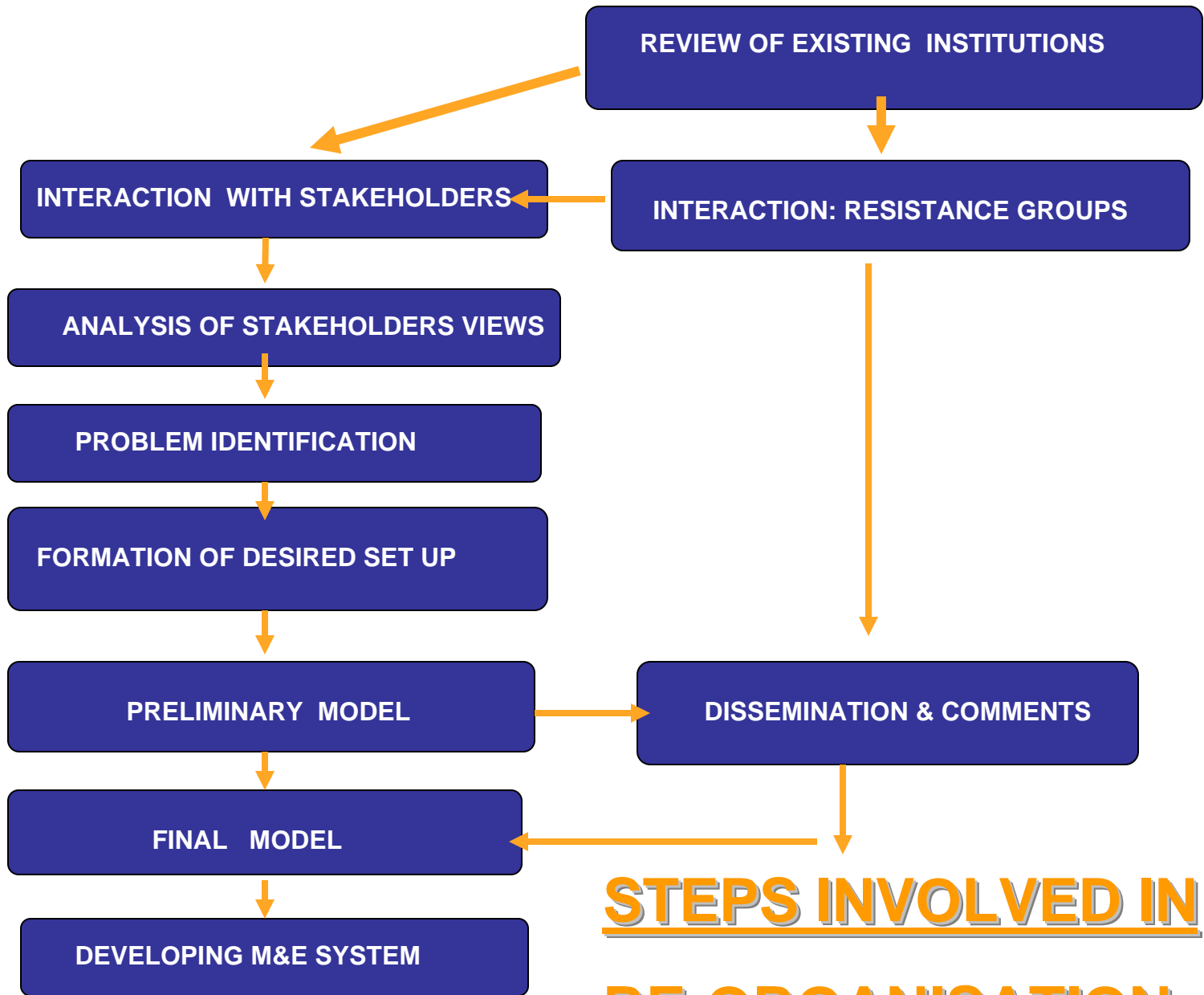


CONSTRAINTS

- INCREASE IN DEMAND.
- LACK OF ALLOCATION OF WATER RIGHTS.
- NO COST RECOVERY.
- INTER-PROVINCE CONFLICTS.
- WATER IS SCARCE AND CONTAMINATED.
- LACK OF COORDINATION.
- LACK OF ACCOUNTABILITY.
- LACK OF PARTICIPATION.
- ENVIRONMENTAL CONCERNS.
- LACK OF ENFORCEMENT OF WATER POLICY

ENABLING CONDITIONS.....

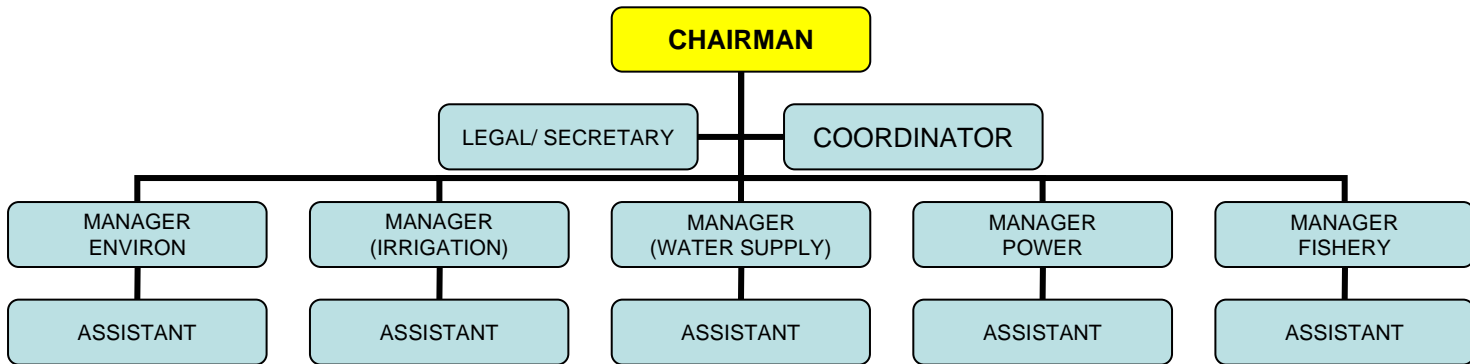
- WHERE THE PROBLEM LIES???.
- POLITICAL ATTRIBUTES: REPRESENTATION & BALANCE OF POWER.
- INFORMATION ATTRIBUTES PROCESS, AVAILABILITY.
- LEGAL AUTHORITY & STATUTES.. ADEQ. POWER, LEGISLATION
- RESOURCES.
- *HUMAN RESOURCES.*
- *FINANCIAL RESOURCES.*
- *INSTITUTIONAL*
- *INFRASTRUCTURAL*



STEPS INVOLVED IN
RE-ORGANISATION

GOVERNMENT OF SAARCKIA

A RIVER BASIN ORGANISATION



ROLE OF NEW RBO

- ENSURE RESOURCE CONSERVATION
- ENSURE ENVIRONMENT COMPLIANCE
- ENFORCEMENT OF WATER POLICY
- WATER ALLOCATION
- MINIMUM FLOW IN THE RIVER
- PRICING & WATER USE PERMITS
- GROUNDWATER
- MONITROING

RIVER BASIN COORDINATION COMMITTEE

