

# Welcome to Cheongju Office



KOWACO's Cheongju Regional Office

## I CONTENTS

- I General Information
- II Outline of Facilities
- III Mul - Sa - Rang : Water Bottles

# I. General Information

## 1-1 Major Mission

Supply of high quality drinking water  
(Stable supply both raw and treated water  
to Domestic and Industrial area)

Chungbuk Province : Cheongju city, Cheongwon county  
Chungnam Province : Cheonan city, Asan city, Yoengi county

Management of Daecheong Multi-Purposed Dam Regional  
Water Supply System(D.M.D.R. Water Supply System)

## 1-2 History

1988. 1 : D.M.D.R. Water Supply Facilities Acceptance(250,000CMD)  
1996.10 : D.M.D.R. Water Supply System  
Starting Construction Work(980,000CMD)  
2003.12 : D.M.D.R. Water Supply System Completion

# I. General Information

## 1-3 Organization

3 Sections 10 teams  
93 workers



## II. Outline Of Facilities

### 2-1 Capacity of Facilities

▮ Supply Source : Daechong Multi-purposed Dam

▮ Intake Pumping Station(2 stations) : 1,230,000 CMD

➔ Daechong Station : 250,000 CMD (unmanned station)

➔ Hyundo Station : 980,000 CMD

▮ Water Treatment Plant(2 plants) : 1,010,000 CMD

➔ Cheongju Plant : 596,000 CMD (Public 403, Industrial 193)

➔ Cheonan Plant : 414,000 CMD (Public 351, Industrial 63)

## II. Outline Of Facilities

▮ Booster Pumping Station(2 stations)

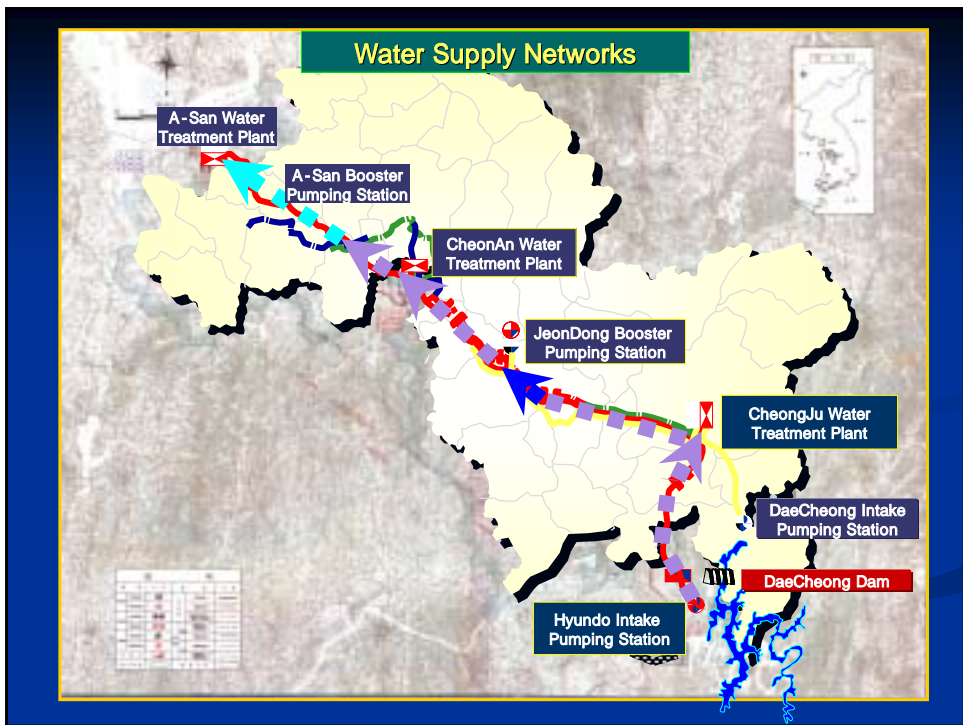
➔ Jeondong Station : 634,000 CMD

➔ Mokchon Stations : 3,700 CMD (unmanned station)

▮ Other Facilities

➔ Pipe Line : 219.4 km ( D = 250 mm ~ 2,600 mm )

Tunnel : 4.8 km ( 5 tunnels, D = 2,000 mm ~ 3,000 mm )



Water, Nature and People

**2-2 Water Supply**

**Cheongju Water Treatment Plant : 181,000 CMD**

- Cheongju City : 149,000CMD(Industrial 42,000)
- Cheongwon County : 21,000CMD (Industrial 5,000)
- Yoengi County : 11,000CMD

**Cheonan Water Treatment Plant : 252,000 CMD**

- Cheonan City : 203,000CMD (Industrial 60,000)
- Asan City : 49,000CMD (Industrial 3,000)

**Asan Water Treatment Plant, Tangjung Industrial Complex : 43,000CMD(Raw Water)**

(Unit : thousand)

**2005 Year Water Supply Perspective : 156,286m<sup>3</sup>**  
 (Raw water 3,456, Public usage 114,530, Industrial usage 38,300)

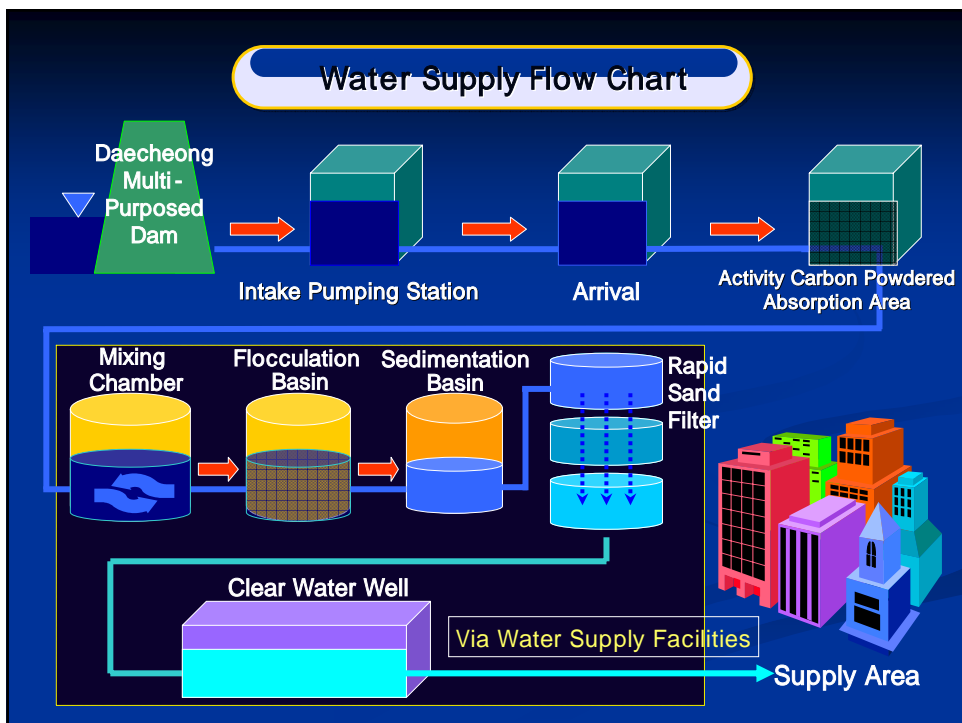
## 2-3 Water Quality Control & Safety Management

### Raw Water(from Daecheong Dam) ('05. 10)

- ➔ COD : 2.5 ppm, 2<sup>nd</sup> Degree ( less than 3 ppm )
- ➔ BOD : 1.6 ppm, 2<sup>nd</sup> Degree ( less than 3 ppm )

### Water Quality Tests

- ➔ Daily test : 9 parameters, Weekly test : 18 parameters
- ➔ Monthly test : 55 parameters in accordance with the regulations
- ➔ Quarterly test : 250 parameters (over WTO standards 121)



## IV. Mul-Sa-Rang : Water Bottles

- ▶ Purpose ▶ Publicity of Clean and Safe Water Treated by KOWACO
- ▶ Usage ▶ Government and Public Organizations' Events, Conferences, etc. & Public Welfare
- ▶ Facilities ▶ Starting Work : 2002. August  
Capacity of Production : 500mL(3,600/hr) 1800mL(1,800/hr)

### Last Years' Water Bottle Supply

Year	2002	2003	2004	Total
Bottles	220,000	940,000	4,330,000	5,490,000

- The area damaged by Heavy Snow(90,000 bottles),
- the train explosion at North Korea's Ryongchon Station (1.8 30,000 bottles)
- The area damaged by the typhoon "RUSA", "MAEMI", "MEGI" & the island areas in the west sea in Korea(31,000 bottles)

## IV. Mul-Sa-Rang : Water Bottles

### '05Year Water Bottle Supply

- | Supply : 4,140,000 ('05. 10)
- | Representative Supply
  - The areas in South Asia damaged by the tidal wave driven by the earthquake(12,000 bottles)
  - The areas in Kangwon and Cheongbuk province damaged the forest fire(30,000 bottles)
  - the sections from which to cut off water supply(60,000 bottles), etc

### New Water Bottle Producing Building

- ▶ The new producing line for the improvement of producing capacity & the publicity of clean and safe water (in April of 2006)
  - ▶ The line for publicity : 300ℓ ( 500ℓ ) 45,000/day
  - ▶ The line for disaster & suspension of water supply : 1.8 9,000/day



Water Bottle Plant Outer-view



Water Bottle Plant Inner-view



New Water Bottle Building's Perspective Drawing

W A T E R

N A T U R E

P E O P L E

**Thank You!**