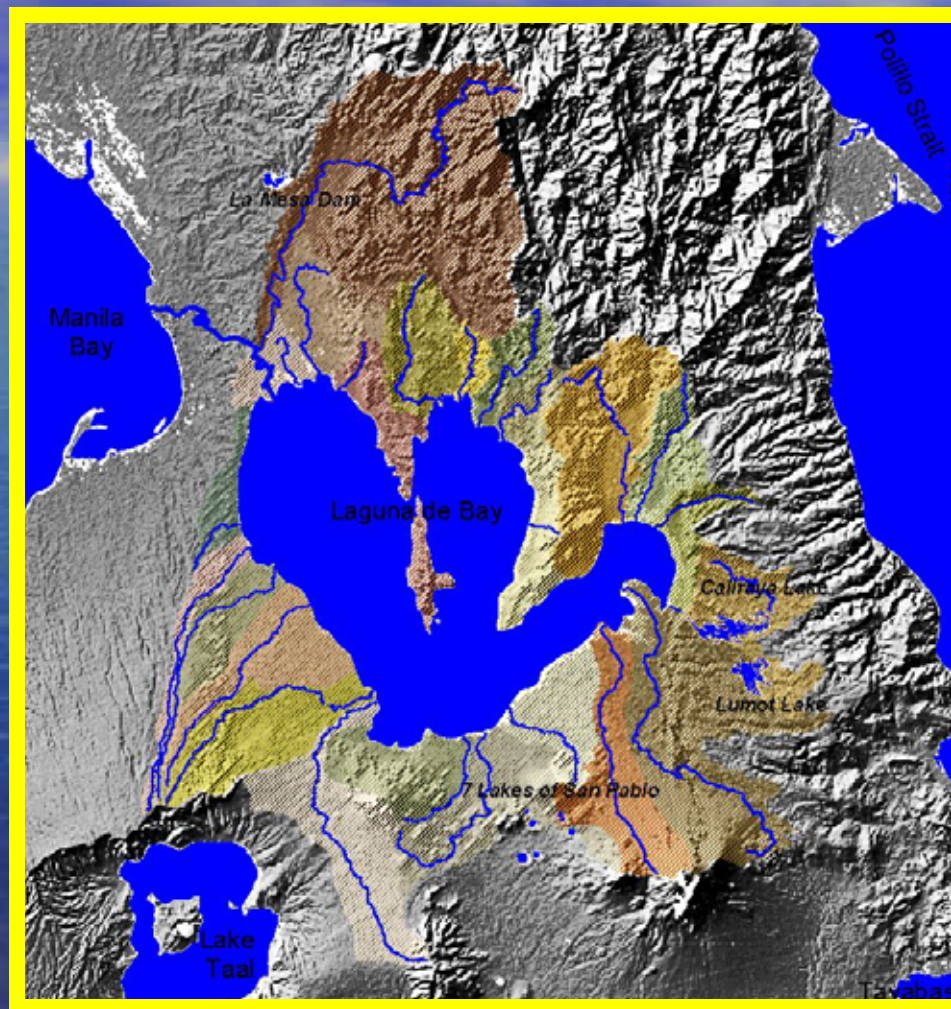


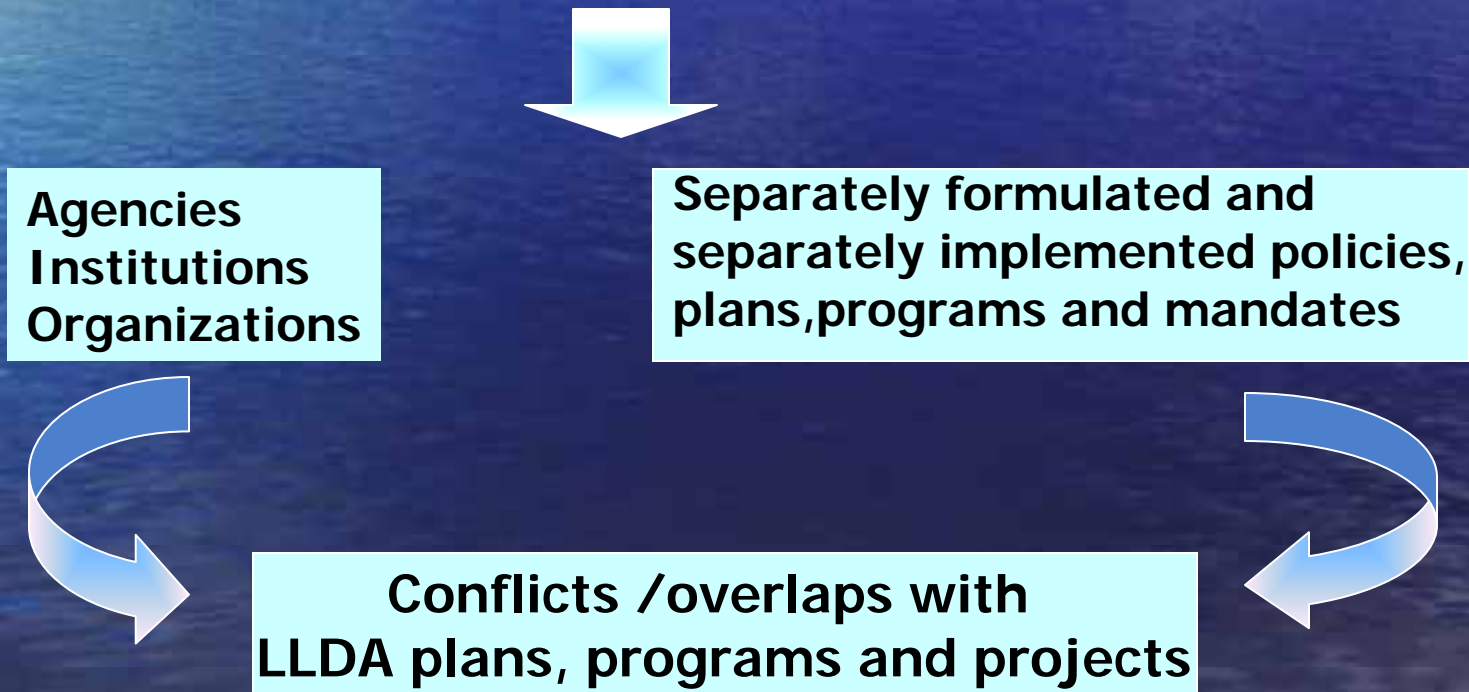
2ND THEMATIC WORKSHOP ON WATER RIGHTS AND ALLOCATIONS



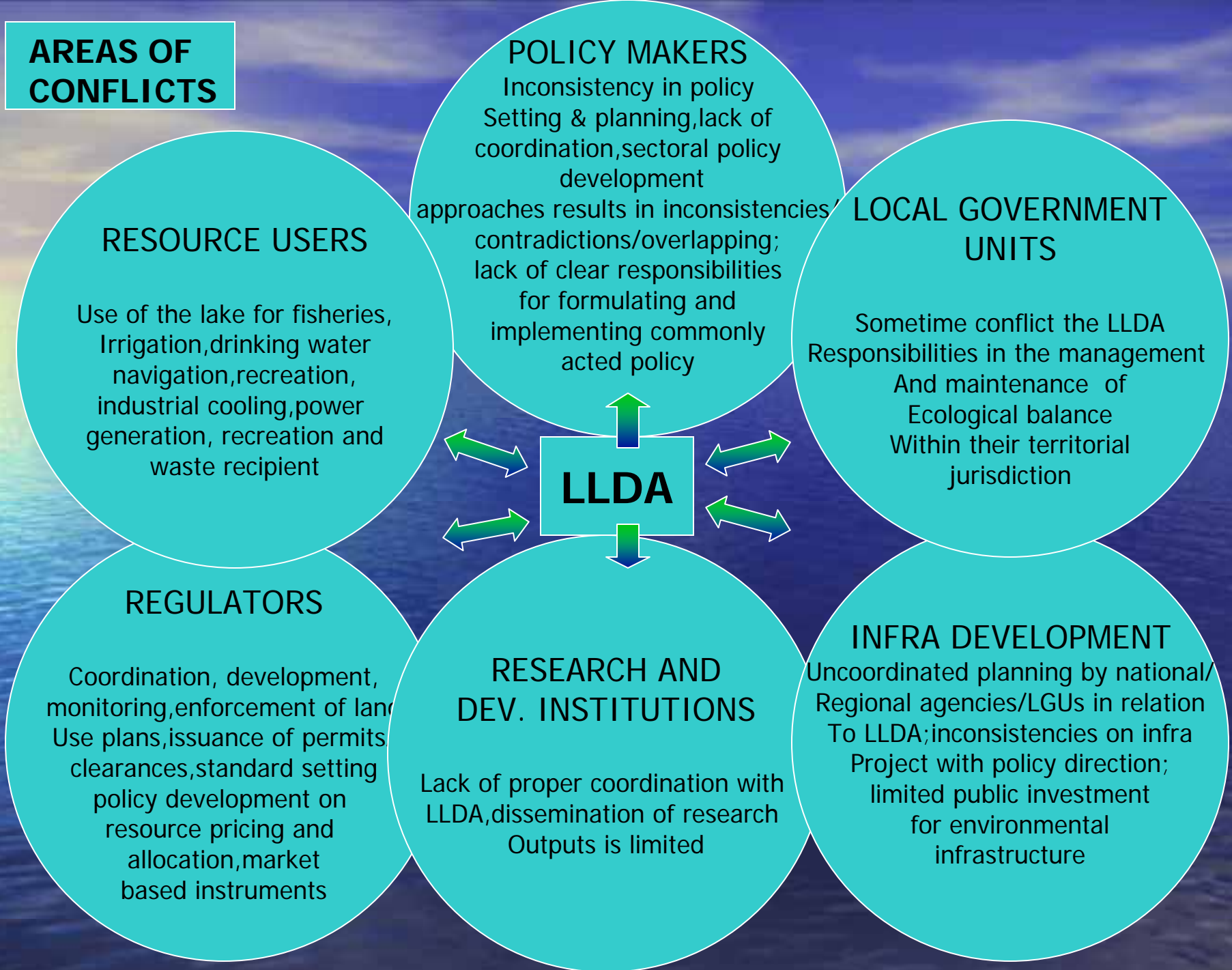
Session 2: Issues, Causes and Effects - LLDA as River Basin Organization

Issues on Policy and Plans

- 1 Lack of a common policy for the management and development of the lake and its resources
- 2 Most plans and programs of different stakeholders are not anchored on the Laguna de Bay Master Plan



AREAS OF CONFLICTS



EFFECTS:

Inefficiency



```
graph LR; A[Inefficiency] --> B[in creating a widely accepted common objective of managing the lake resources and its watershed]; A --> C[Balancing the different political, economic and social interests]; A --> D[Focusing government, private sector and citizen resources on managing the system]
```

in creating a widely accepted common objective of managing the lake resources and its watershed

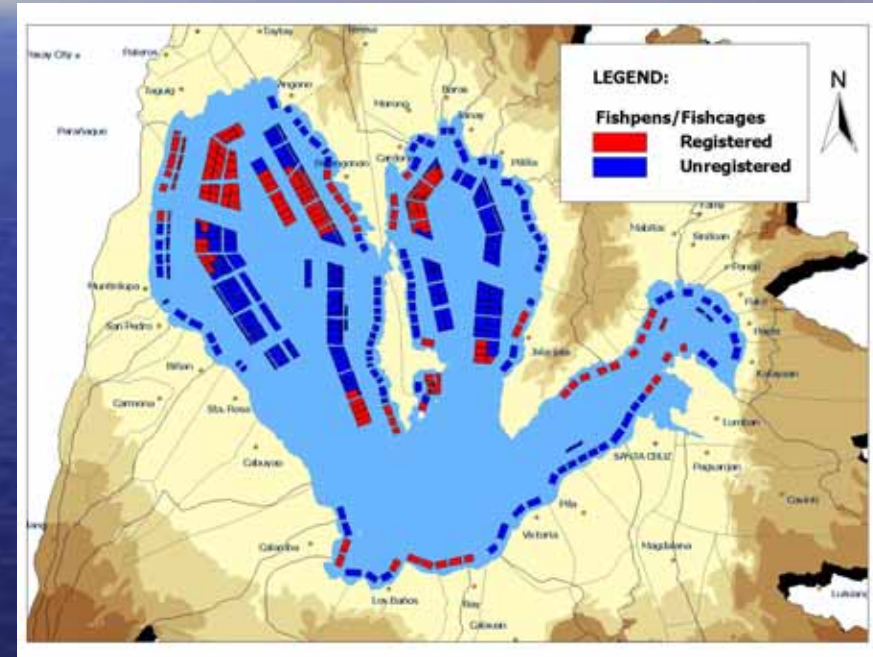
Balancing the different political, economic and social interests

Focusing government, private sector and citizen resources on managing the system

Issues on Legal Framework

1

Debate on the wisdom, size, location and benefits of the ZOMAP among LLDA, BFAR, FP/FC Operators and fishermen



LGU mandate on the issuance of environmental permits conflicts with Regulatory functions of LLDA

Inconsistency in the implementation of ZOMAP due to the frequent changes in LLDA Administration (GMA Belt, FVR Belt, ERAP belt)

EFFECTS:

**adverse impact on lake's ecological integrity,
decline in fishproduction;
less opportunity for small fishermen,
reduced area for other lake uses**

2

Coverage of water rights is limited to fishery aquaculture. No policy for other uses.



The previous demand for water did not trigger imposition of surface water price structure .

Prioritize ZOMAP due to the adverse impacts of FP/Cage operation to the Lake's integrity

EFFECTS:

The absence of a policy on the utilization of water Resources creates wasteful usage of water, Inter-sectoral mis-allocation of raw water in favor of less valuable uses and increase levels of water pollution

Issues on Organization

LLDA could not maintain continuous control over all programs and projects

Shifting policy and program directions due to the frequent shift in the top management of LLDA

LLDA has a wide jurisdictional mandate but it has limited staff to effectively carry-out its mandates, functions, plans and programs

EFFECTS

Each agency/institution/organization formulates its own policies, plans and programs without due consideration to the environment.

Lack of continuity in the implementation of programs and [plans

Delayed and sometimes ineffective in implementation of policies, plans and programs

thank you!