



3ND THEMATIC WORKSHOP ON WATER RIGHTS AND ALLOCATIONS

Session 3: Proposals/Plan of Action

**Jocelyn Fabian-Siapno
Laguna Lake Development Authority
27 November to 1 December 2006
Century Park Sheraton Hotel, Bangkok, Thailand**

Issue: Coverage of water rights in Laguna de Bay Region is limited to aquaculture use

need to formulate and implement a policy on the use of surface water

with multitude of purposes



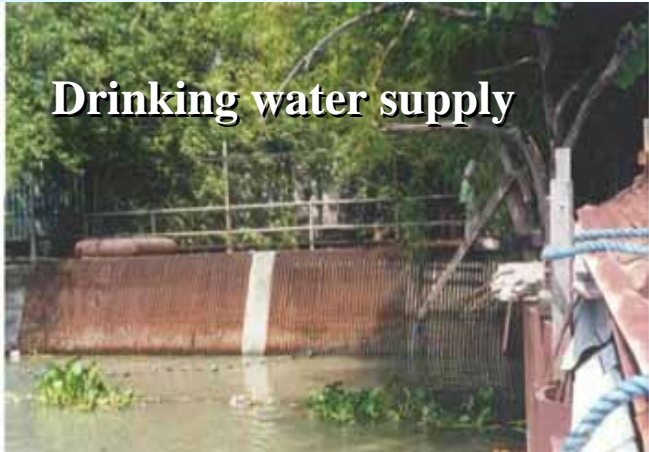
a critical resource and is situated in the midst of urban and industrial development

Lake water is treated as a free and open access resource

Proposal

Formulate and implement raw water pricing policy with its corresponding Implementing Rules and Regulations for all surface water users

Drinking water supply



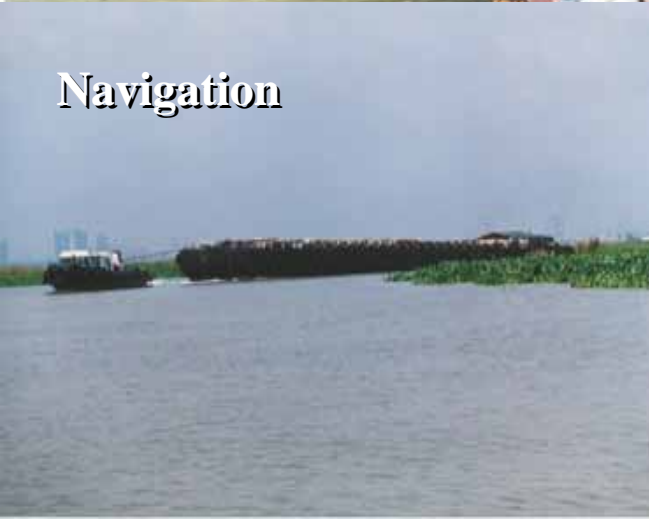
Irrigation



Industrial cooling



Navigation



Recreation



Power Generation



Procedures and Processes



Legal aspect

→ Policy development

→ LLDA Board's approval
and passing of a resolution
to adopt the new program

→ LLDA General Manager to
issue Memorandum Circular in
support to the Board Resolution

Institutional aspect

– LLDA Reorganization

→ Conduct of institutional assessment
-SWOT

→ Revamping of the organizational
structure and operational processes
-IWRM

→ Formalization of the internal arrangements
-DBM approval; charter amendment

Technical aspect

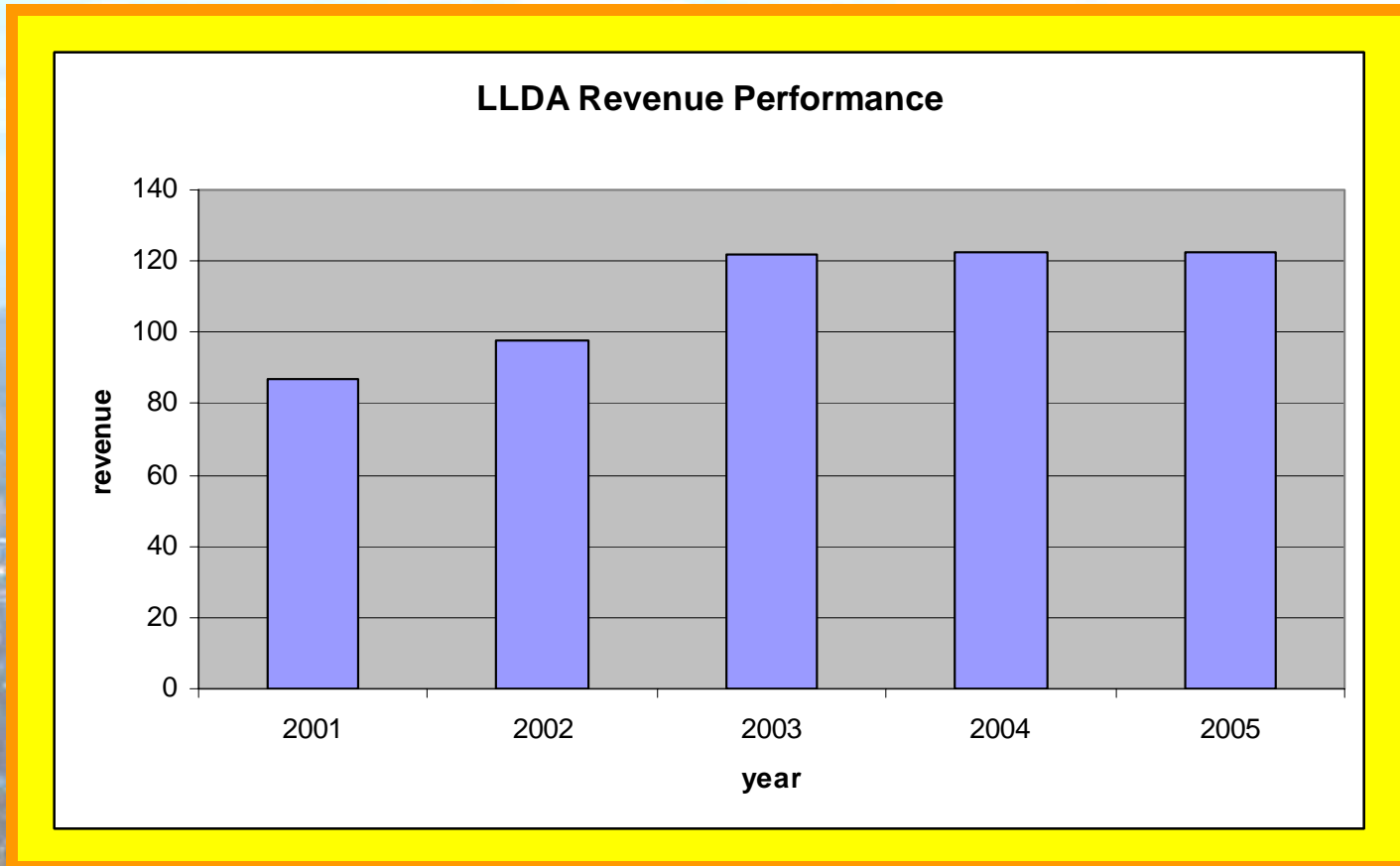
- **Conduct inventory of surface water**
- **Assess existing raw water pricing policy and adopt scheme applicable to LDB Region**
- **Assess social acceptability and affordability**
- **Conduct intensive IEC campaign**
- **Testing in one sector**

Evaluation

High possibility of implementing the program – financially, technically, administratively,

Legal mandate: EO 927 granted LLDA water rights over bodies of water within the Laguna de Bay Region. It also authorizes LLDA to collect fees for the use of the region's water resources.

Financial feasibility- feasible



Source: Accounting and Investment Section, Finance Division

Technical Feasibility - feasible

Availability of technically qualified staff

Availability of infrastructure and equipment
to support the development and
maintenance

of the program

Availability of technical data and capacity
to gather data

Administrative feasibility - feasible

Appropriate data are readily available or can be obtained, produced or interpreted with available resources such as staff expertise, time and equipment

Sustainability

Highly sustainable

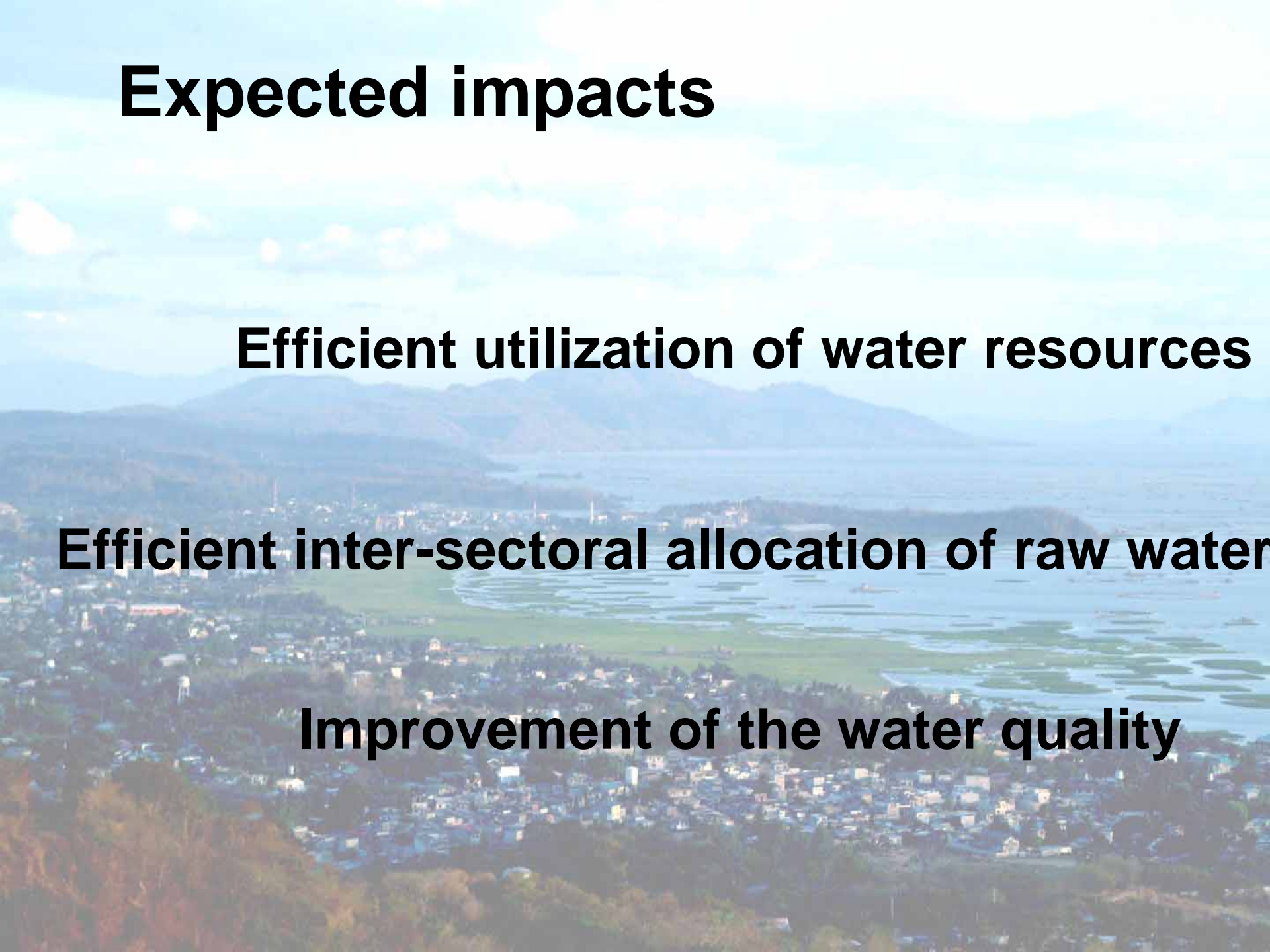


Expected impacts

Efficient utilization of water resources

Efficient inter-sectoral allocation of raw water

Improvement of the water quality



WORK PLAN

An aerial photograph of a coastal town and bay. The foreground shows a dense residential area with many small buildings and trees. In the middle ground, there is a large green field or park area. The background features a wide bay with many small islands and a range of mountains under a cloudy sky. The text 'WORK PLAN' is overlaid in the center of the image.

Work Plan

Activities	2006	2007	2008	2009	2010	2011
Policy development						
Review/approval of Policy						
Issuance of MC						
Stakeholders Consultation						
IEC Campaign						
Institutional Assessment						
LLDA restructuring						
DBM Approval						
Testing in one sector						
Full implementation						
M & E						

Thank you!

