

Part 2

**Adjustment with various parties
concerned Tone Canal Project**



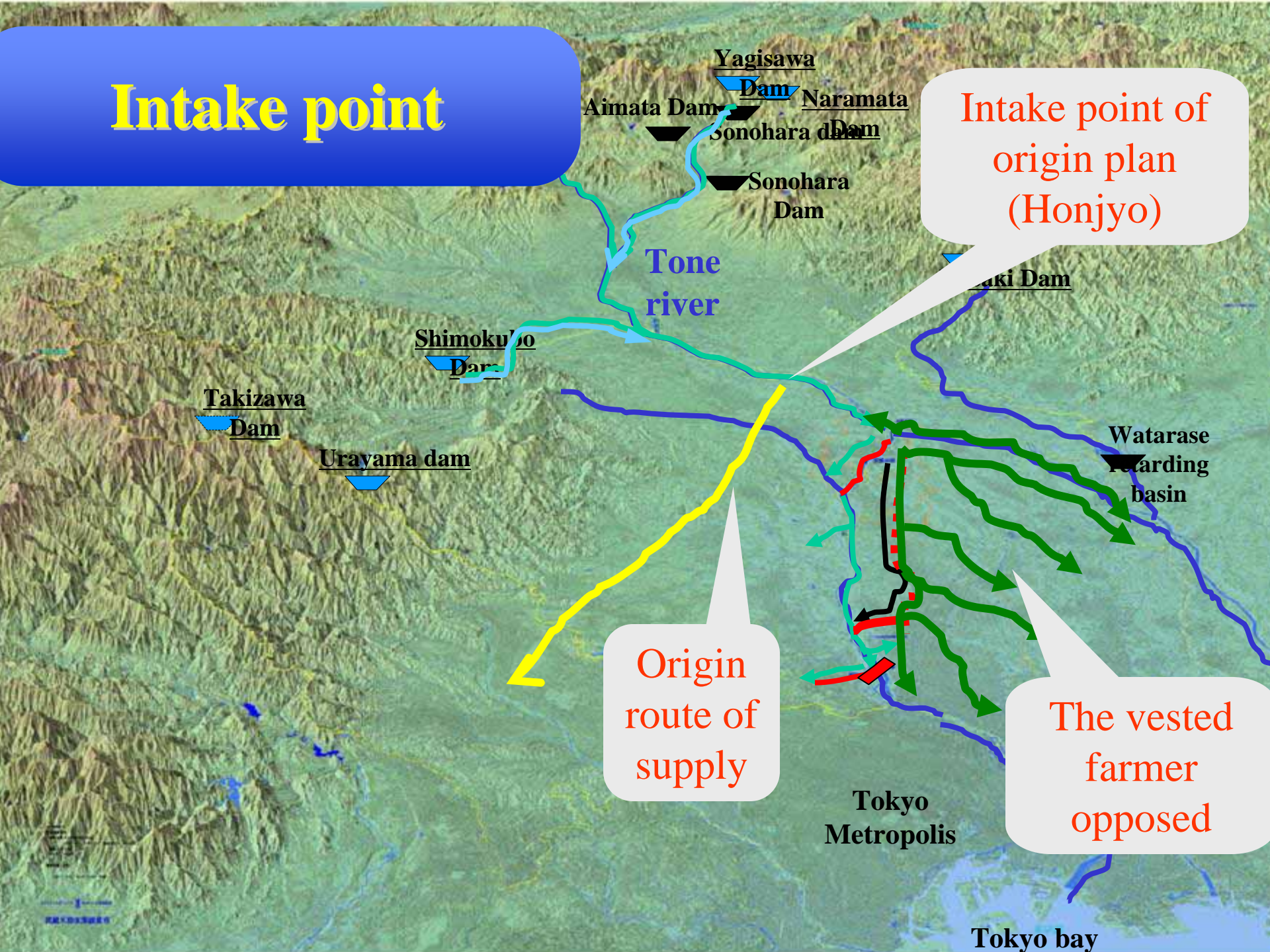
1. In coordination project plan

- The **domestic water demand increased rapidly** by the high economic growth in 1968's.
- On the other hand, **The riverbed of Tone river decrease** such as the gravel dredging, and the situation in which existing irrigation intake points were not able to intake water.
- Therefore, comprehensive water plan which supply domestic, industry, and agricultural water intake was gathered to the unified existing irrigation water intake point of Minumadai Canal

Regard for the vested farmer

- **Intake point for domestic water was more upstream in original plan to move water from Tone river to metropolitan area.**
- **But the vested farmer opposed against the plan worrying downstream flow decreased.**
- **It was settled by damming up the river and making the intake unified.**

Intake point



Intake point of origin plan (Honjyo)

Origin route of supply

The vested farmer opposed

Tokyo Metropolitan

Tokyo bay

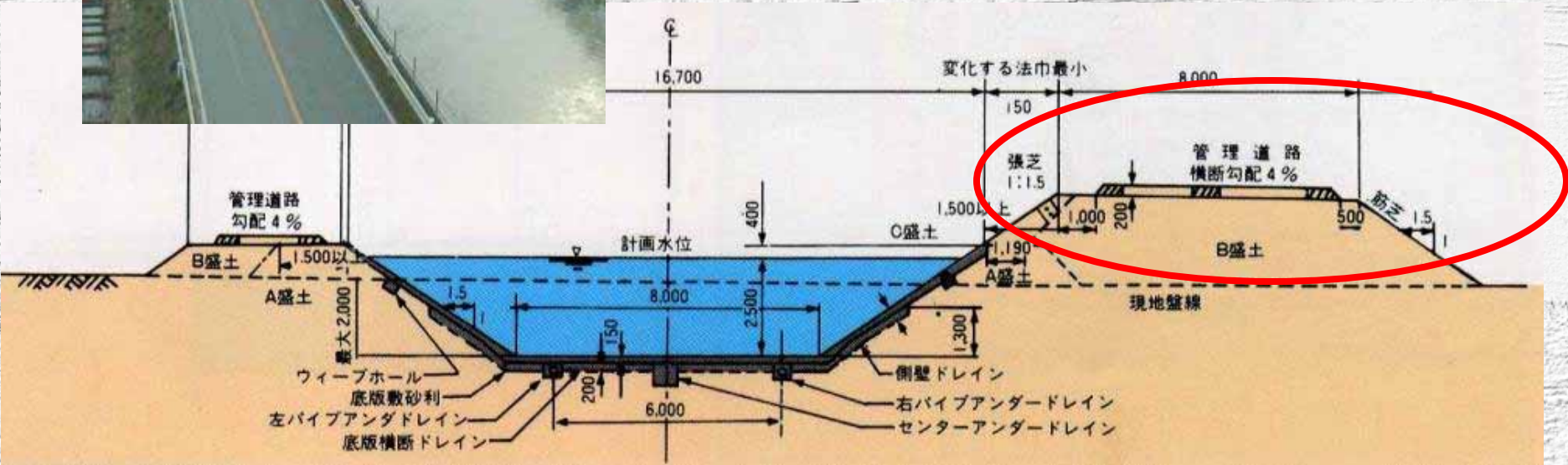
Regard for the locals

- **Similarly, opposite from the locals lived in local Gyoda city happened because of little advantage from the Tone Canal Project.**
- **Therefore, as the local promotion plan,**
 - **Constructing the major road** through the city along the Musashi Canal.
 - **Adding the function of draining local drainage into the Musashi Canal** at the flood time for the drainage system of city divided by Musashi Canal.

for the locals at Musashi Canal



- **Constructing the major road** through the city along the Musashi Canal.



for the locals at Musashi Canal

- **draining local drainage into the Musashi Canal at the flood time.**



Open the drainage gate at the flood time

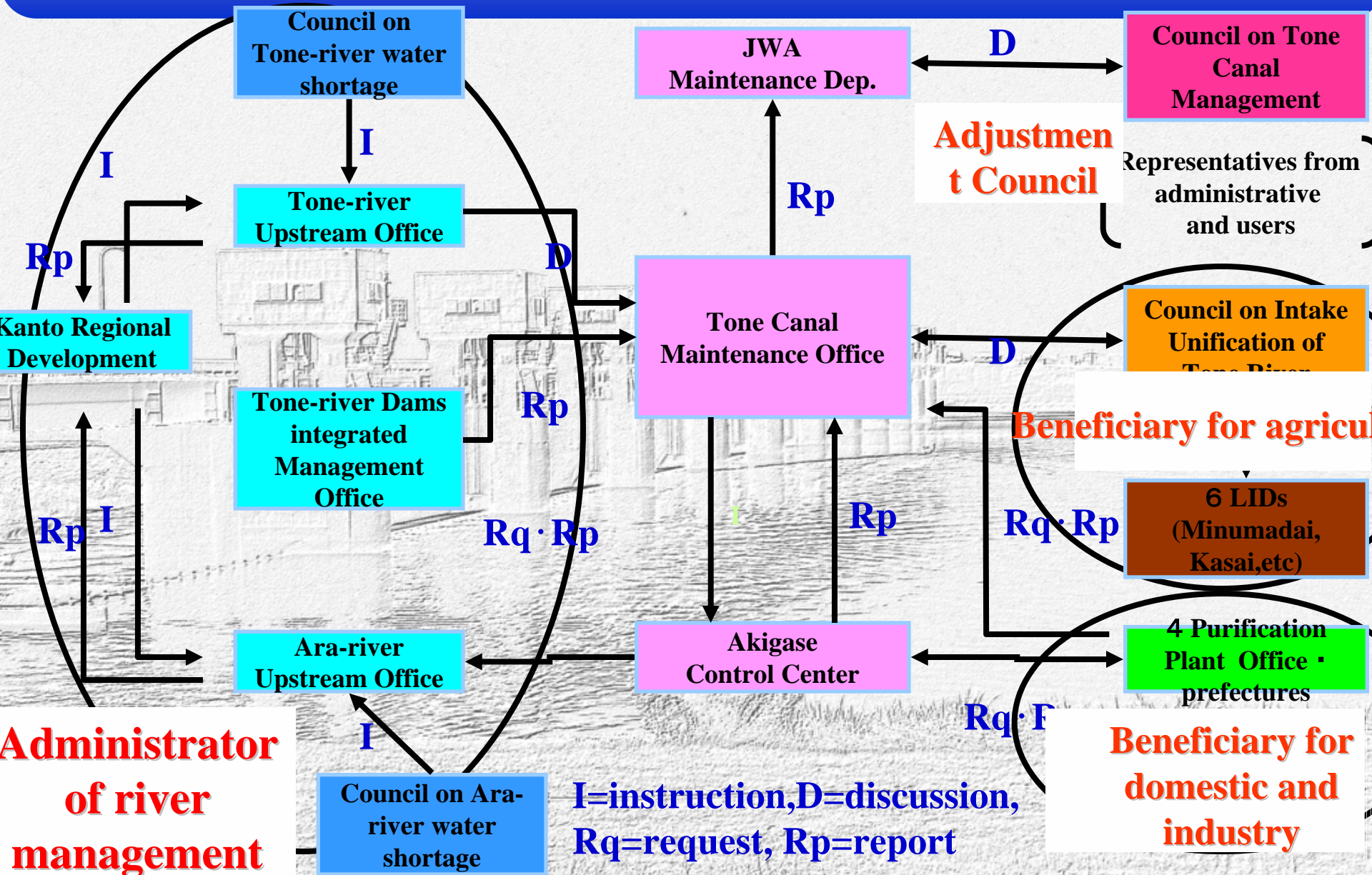


Pumping station for drainage

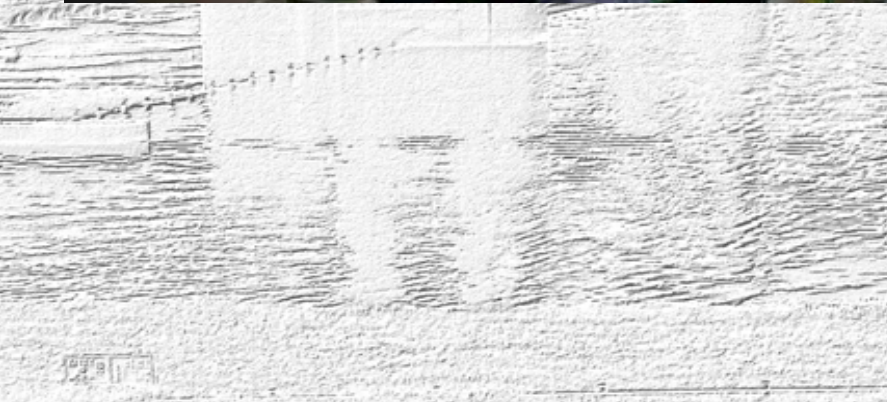
2. coordination on management

- After constructing, we must operate these facilities adjusting with various parties concerned our project.
- **With Administrator of river management**, we report the volume of intake water per days.
Then they decide to send water from dams.
- **With water users** , we supply water just they requested and report them the volume of supplied water per days.
Besides, we have a council with water users once per year to report our management through a year and decide important issues on our management.

Adjustment with various parties in management



Council on Tone Canal Management



Exchange of Regional people



Facility Observation meeting among wives



Walking event in Ara - river (Akigase Weir)



Observation meeting on Salmon coming up season



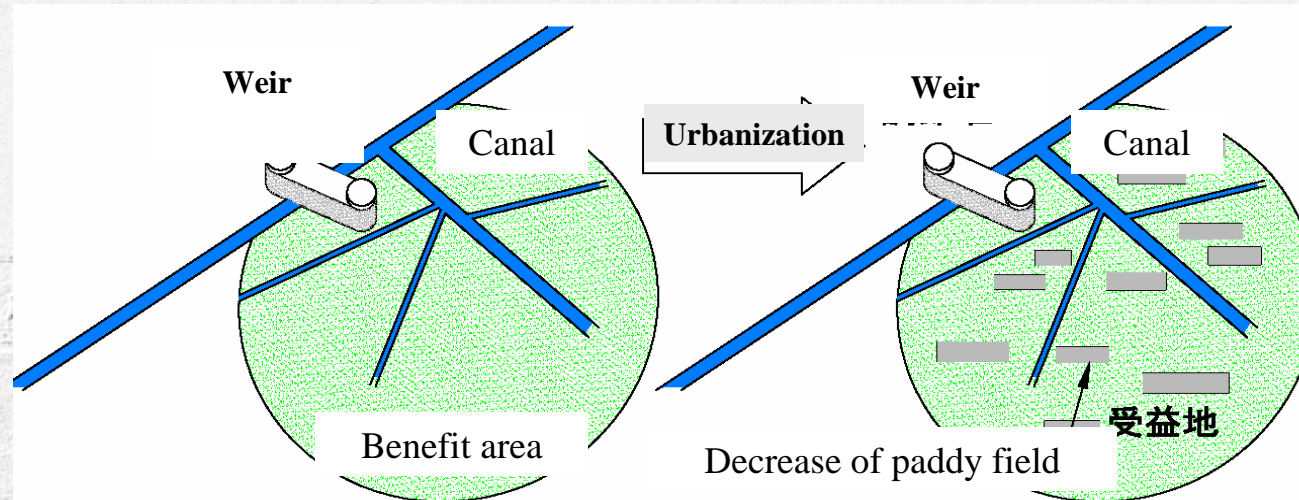
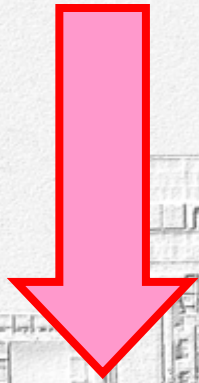
Observation meeting on Salmon inspection

3. Agricultural water rationalization project

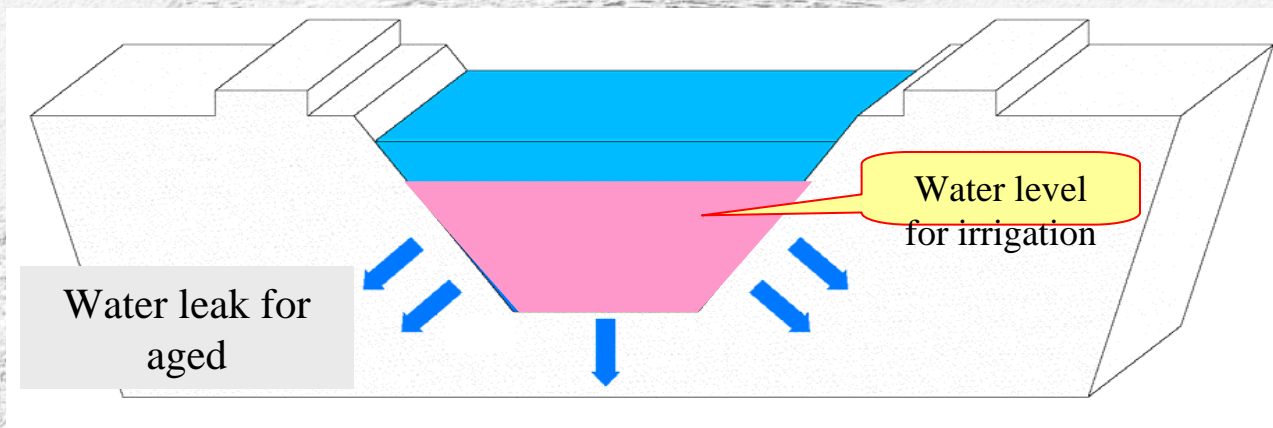
- Background on the farmer side,
 1. Farmland diversion according to urbanization.
 2. Superannuation of facilities by aged deterioration
 3. Depression by large area subsidence
- On the other hand, **the domestic water demand increased rapidly** near the Tokyo metropolitan area in 1970~90's. But dam projects need much time to be able to water supply.
- Therefore, one of the way to request the demand in time , we had begun “Agricultural water rationalization project”.
 1. the water supply facilities are arranged.
 2. Reasonable use for agricultural water
 3. Making of management form proper
Then Extra water right of agriculture move to water right of domestic water

Mechanism of agricultural water rationalization

Land that is diverted the farmland, and is used for another purpose is widely scattered.



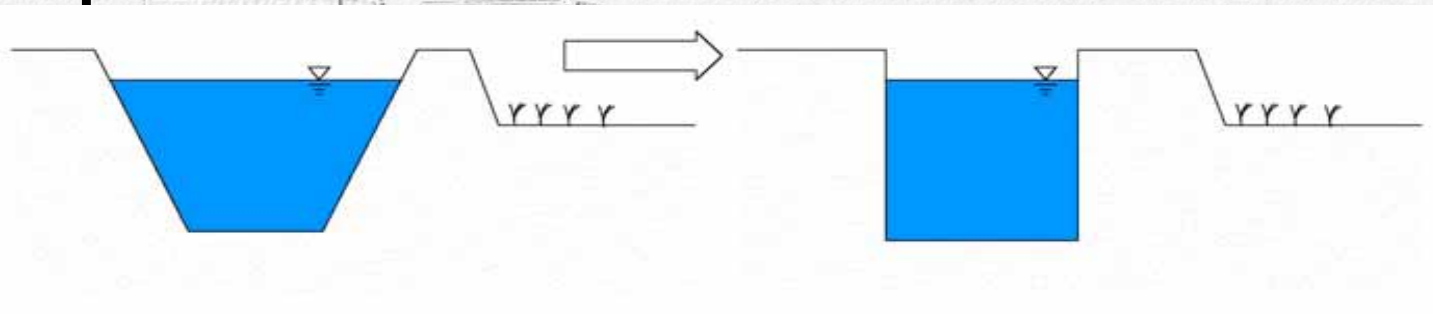
"Water level for irrigation" to secure the water level is necessary to take water to the paddy field even if the farmland area decreases.



Mechanism of agricultural water rationalization

A necessary amount corresponding to a current irrigation area can be appropriately supplied by doing the following correspondence, and reasonable use becomes possible.

- ① The waterway is repaired to a proper section that corresponded to the current state.



- ② The adjustment weir to secure a necessary water level of A is set up.

