

MIDORI Net Imbanuma



What is MIDORI Net?

MIDORI Net refers to the nickname of a group of approximately 6,000 land improvement districts (LIDs) throughout the nation. Literally, "MIDORI" consists of three Japanese characters: "water," meaning agricultural water as well as regional irrigation and regional drainage; "land," signifying farmland (rice paddies) and benefited areas; and "village," representing agricultural communities and rural areas. Through these key words, MIDORI expresses the willingness of LIDs to establish a network involving farm households and local residents in the creation of beautiful and affluent communities.



What is the land improvement district?

Land improvement districts (LIDs) refer to organizations established in conformity with the Land Improvement Law. LIDs collect membership fees from farm households with the primarily goal of managing water (via pump stations and agricultural irrigation or drainage canals), which is indispensable for agricultural production (i.e. cultivation of rice and vegetables). They also implement **land consolidation** projects (reallotment of paddy fields) to develop efficient agriculture.

MIDORI Net manages 400,000 km of agricultural irrigation and drainage canals nationwide, which is equivalent to traveling around the earth 10 times!



But this must be difficult if farmers have to bear the burden alone. I wonder if there is anything easy that we could do to help . . .

Agricultural irrigation and drainage canals help make rural living pleasant



There are many things that everyone can do with ease. For example, per capita annual rice consumption in Japan has decreased by half in comparison with that in olden times. This has caused the area of rice paddies to gradually decrease. To maintain farmland, which is important for us, it is also essential to learn about the advantages of rice and vegetables as well as consume large amounts of them.



MODORI Net as of now

Agriculture and MIDORI Net are said to have played a variety of roles in not only helping to ensure stable supplies of food, but also performing **multiple functions**. These functions include providing beautiful landscapes and comfortable living environments, cleaning water, adjusting flood water and handing down traditional culture to future generations. However, constructed facilities become obsolete and require increasing maintenance costs. In addition, it has become difficult to continue protecting regional resources in the same manner as in the past due to drainage problems caused by regional development and abnormal weather conditions (flood risk, water quality), as well as increased negligence in farming caused by the aging of society and depopulation of rural areas.

That's why MIDORI Net Imbanuma is developing activities based on four major pillars.

○National Irrigation and Drainage Project Imbanuma Phase Two District National Project for Improving Catchment Water Quality Conservation Functions

Repairing old facilities will prevent "accidental water leakage, for example, thus ensuring stable water distribution. In addition, recovery costs will be decreased.

Improving drainage pump stations will enable management of drainage canal water levels, thereby helping to make communities more resilient to flooding and other damage and allowing residents to live comfortably.

This facility plan will contribute to the purification of Imbanuma Marsh as paddy fields and water canals exert their inherent abilities to purify water to the fullest.



Sogo Irrigation and Drainage Pumping Station to be improved

○Campaign to create land improvement districts in the 21st century

- Working together with communities toward improving our hometown -



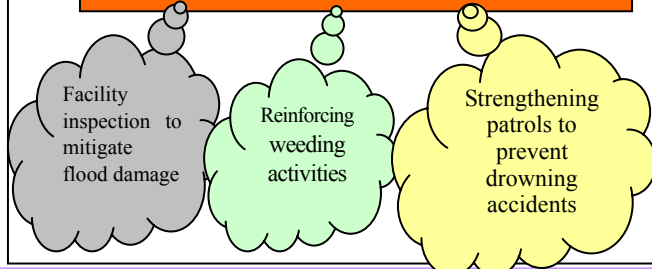
With the motto of "From land improvement districts only for farm households to a MIDORI Net that raises community expectations," MIDORI Net Imbanuma has been developing a campaign to create land improvement districts in the 21st century for the development of agriculture and communities through collaboration with not only farmers but also local residents.

We also cooperate with and support integrated study and lessons designed to learn about the hometowns of students as part of this campaign. For more information, please feel free to contact us.

○Project to promote the improvement of the management system for facilities constructed by the national government

This project aims to improve the management system of land improvement districts, which manage and maintain facilities designed to promote proper regional activities in regard to the **multiple functions** of agricultural water use facilities (pump stations, irrigation and drainage canals).

Demonstrating multiple functions

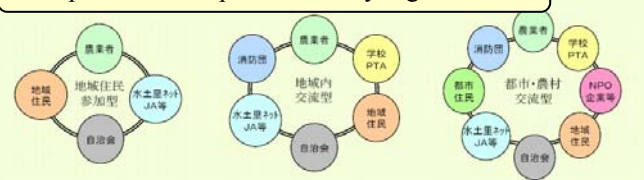


○Measures to improve the environmental conservation of farmland, water and rural areas

With the rapid progression of the aging of society and declining population in rural areas, it has become increasingly difficult to protect MIDORI (farmland and agricultural irrigation and drainage canals), which is important for communities.

Aiming to support MIDORI in the years to come, both farmers and various other local residents will participate in an organization to be established for the development of a variety of activities.

Composition examples of activity organizations

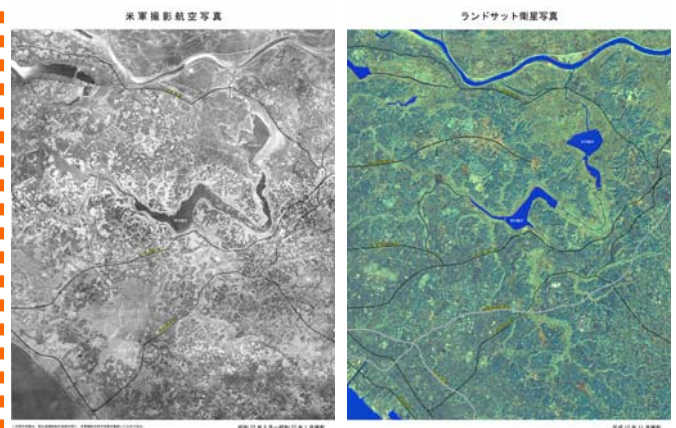


Let's all support MIDORI in our communities!

Overview of MIDORI Net Imbanuma

- Objectives of the establishment: Promoting the National Imbanuma Reclamation and Construction Project (construction commenced in 1946), operating and maintaining facilities constructed under this project and contributing to the increasing of food production by implementing accessory works to national projects
- Date of establishment: June 10, 1953 "Tohoku Regional Agricultural Administration Office No.1"
- Benefited area: approx. 6,500 ha (equivalent to 132 Tokyo Disney Seas); Sakura City, 9 other cities, 2 towns and 2 villages
- No. of members: approx. 9,000; no. of employees: 24 (in four sections: General Affairs, Accounting, Maintenance and Coordination).
- Drainage basin: approx. 54,000 ha (about 10% of the area of Chiba Prefecture); Sakura City and 16 other municipalities
- Catchment area population: approx. 730,000 (about 12% of the population of Chiba Prefecture)

Present and past of the Imbanuma Region



Aerial photograph taken by U.S. forces around 1947

Landsat image taken in November 2000



