

**NARBO's 9<sup>TH</sup> IWRM TRAINING**  
12-19 May 2014 • Philippines



*Building on IWRM Good Practices*

*The Laguna Lake Basin Experience*

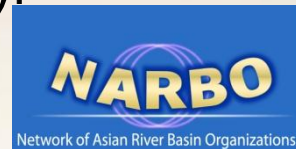
# IWRM Guidelines at River Basin Level (Part 2-1)

## Koichiro OMOTO

# Koichiro OMOTO

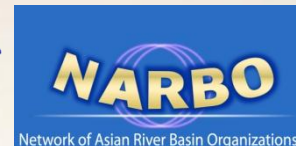


- ✓ I joined Asian Development Bank Institute (ADBI) in this year on secondment from the Japan Water Agency (JWA).
- ✓ I have worked at JWA for more than 15 years. After entering JWA, I mainly experienced on public relations and stakeholder coordination in dams, canals management office and dam construction office in the Kanto, Chubu, Kansai, Kyushu regions of Japan.
- ✓ I also have experience as government officer in the Ministry of Land, Infrastructure, Transportation and Tourism (MLIT) and the Ministry of Agriculture, Forestry and Fisheries (MAFF).



# Contents

1. Component of IWRM Guideline
2. Sectoral Perspectives
  - Perspective of Agricultural Sector, Domestic Water Supply Sector, Flood Management Sector, etc . . .
3. IWRM Process
  - Recognizing and identifying/Conceptualizing/Coordinating & detail planning/ Implementing, monitoring & Evaluating
4. Key For Success and Example(s) in Japan



# Component of IWRM Guideline

## Part 1 Principles

### Target Group

- Decision Maker
- Policy Planner
- Government Official
- River Basin Organization

## Part1 Principles

## Part 2 Implementation

### Target Group

- Government Official
- NGO
- River Basin Organization
- Other Stakeholder

### Part2-1 IWRM Coordination

### Part2-2 Flood Management

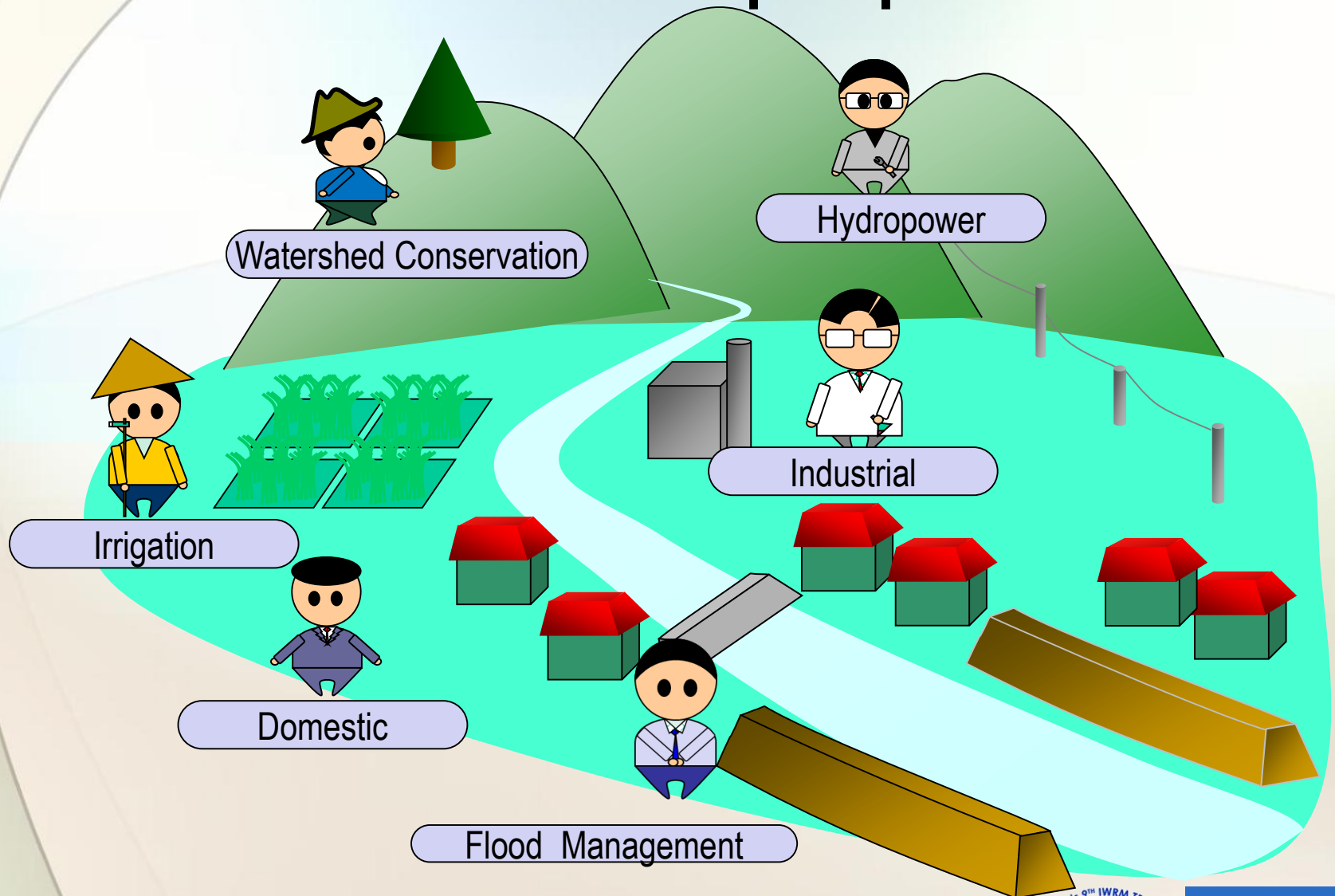
### Part2-3 Invitation for Irrigation practitioners

### Part2-4 Managing environmental sustainability

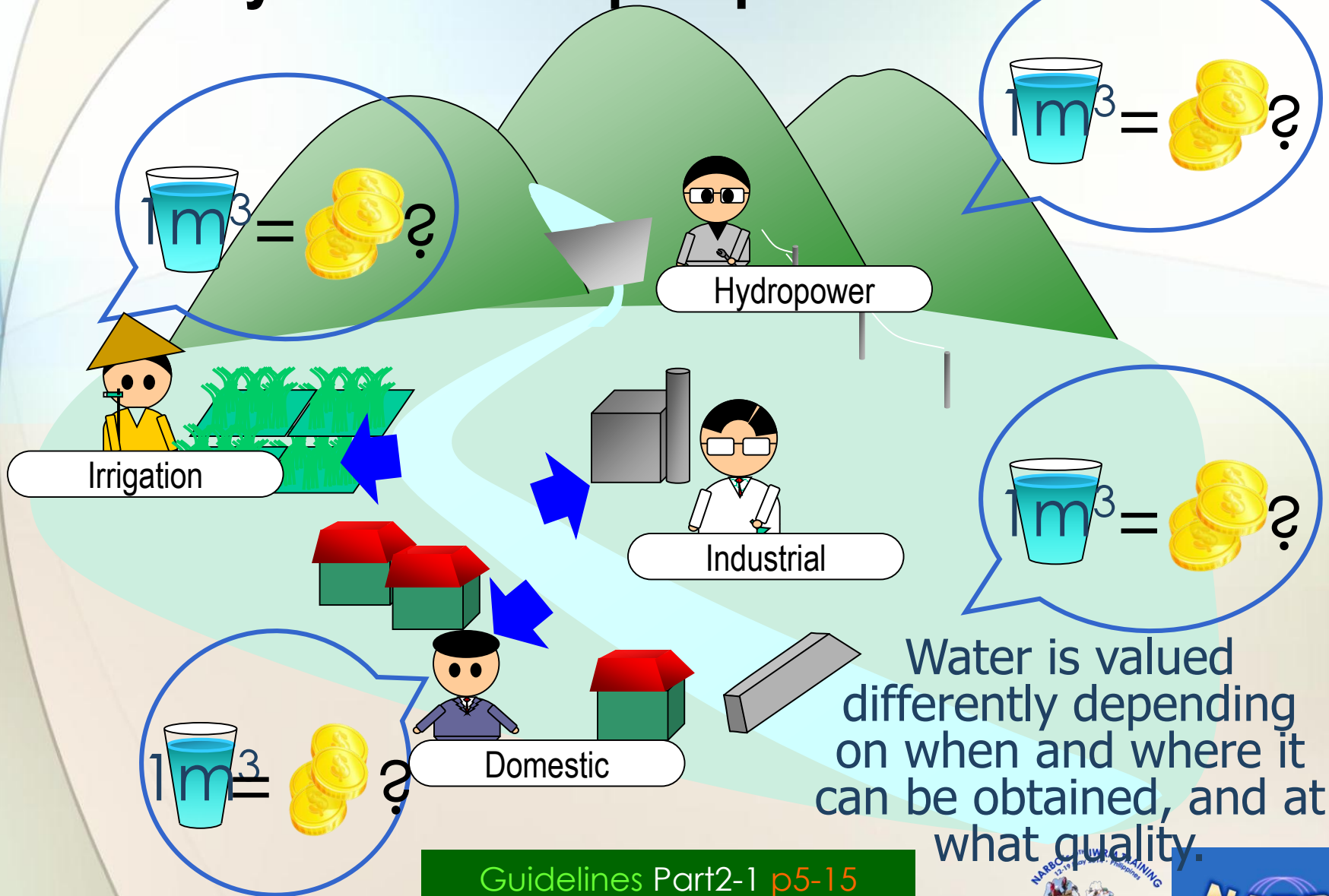


# **SECTORAL PERSPECTIVE**

# What is 'sectoral perspective'



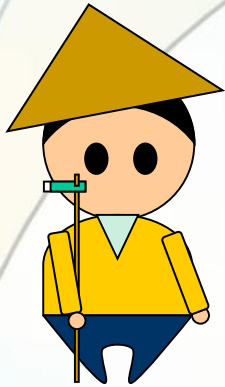
# Why is sectoral perspective needed?



Water is valued differently depending on when and where it can be obtained, and at what quality.

Guidelines Part2-1 p5-15  
2. Sectoral Perspectives in IWRM





# Each sector's perspective 1

## Perspective of Agricultural Sector

Primary concern is food production. Water is just an instrument

Interests of Agricultural sector

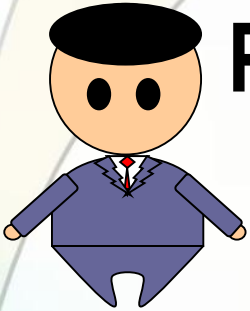
- Water, together with land, is only an instrument for agricultural production.
- There is a strong sense of entitlement that they can use their water exclusively.

Impacts by other water users

- There is the possibility that irrigation users may not be able to obtain sufficient water if other water users draw water upstream.

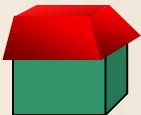


# Each sector's perspective 2



## Perspective of Domestic Water Supply Sector

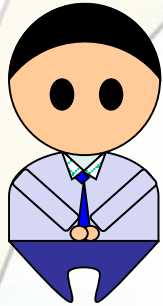
- Requires water quality on top of water quantity
- Interests of Domestic sector
  - Domestic water supply provides clean water to people in a stable manner and is highly public in its nature.
  - Current domestic water supply in cities does not provide an opportunity for users to choose their service. People have to use the available water supply in the area.



Guidelines Part2-1 pp.7-9  
2.2.2 Domestic Water Supply Sector



# Each sector's perspective 3



## Flood Management Sector's Perspective

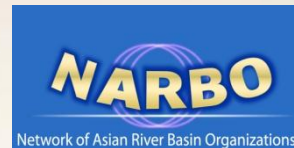
Protecting the lives and properties of residents living in the river basin  
Interests of Flood management sector

- The primary concern for flood managers is to protect people and their properties in the river basin from floods, and to minimize damage in a basin-wide manner.

Impacts by other water users

- In withdrawing water from rivers, water-use sectors want their water-intake facilities and locations to enable efficient water diversion.
- -> Water intake structures may block floodwater flow.

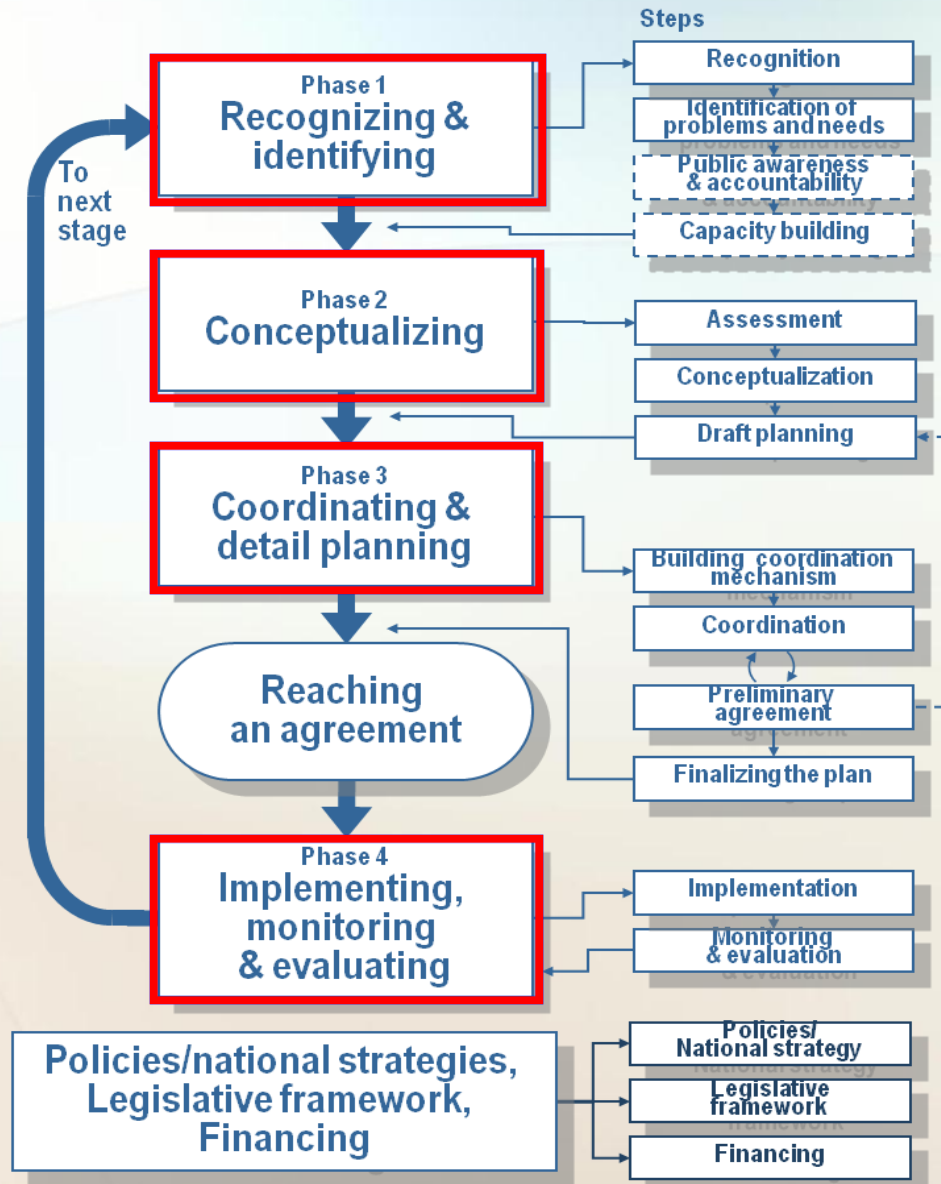
Guidelines Part2-1 pp.12-15  
2.4 Flood Management Sector's Perspective



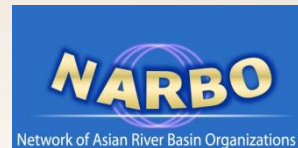


# IWRM Process

# IWRM Process

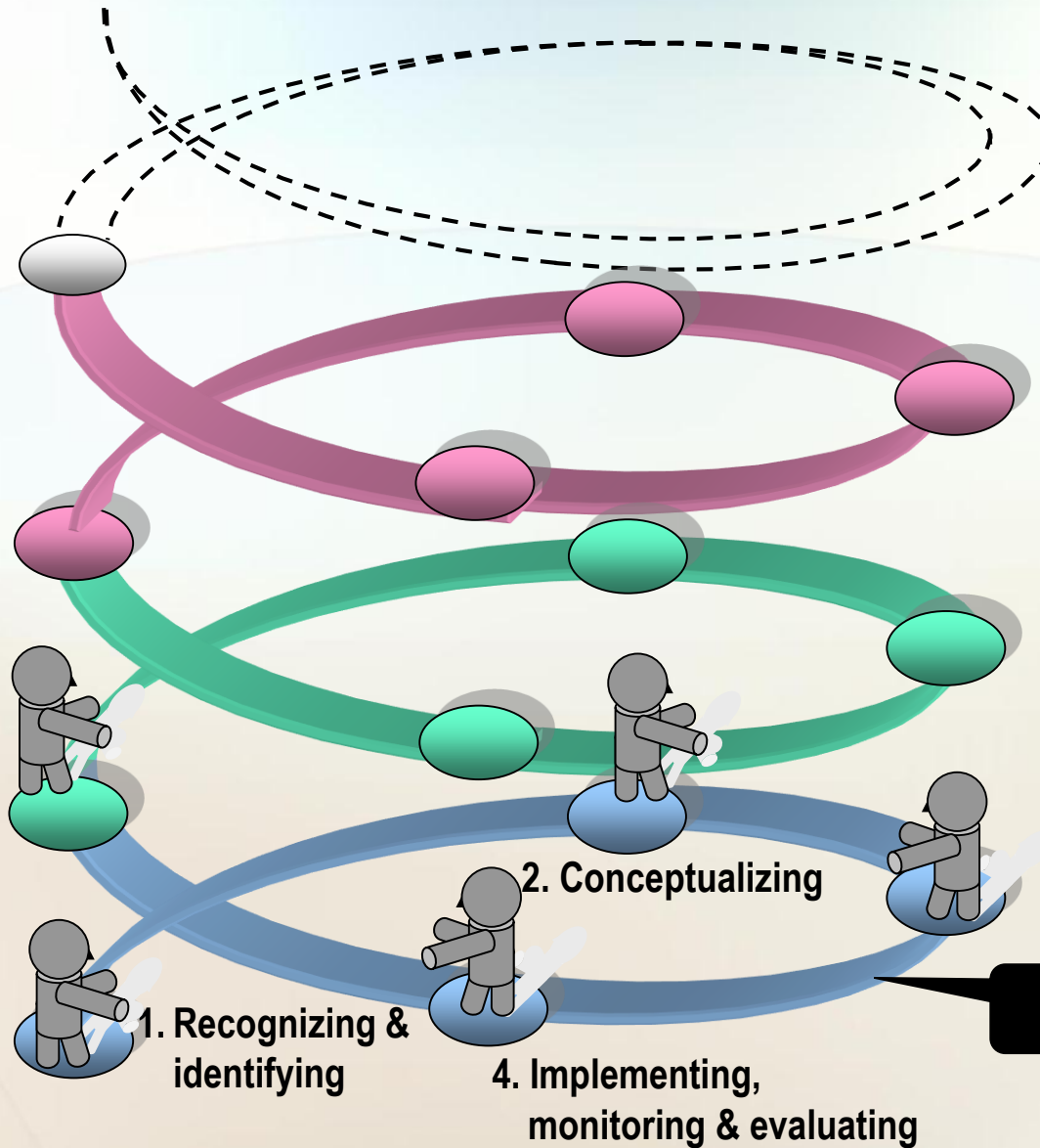


Guidelines Part2-1 p16-17  
3. Key for Success in Implementing IWRM



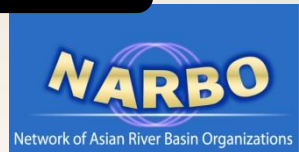
# IWRM Spiral

Roadmap for Investment Program



Changing Conditions

IWRM Process



## Phase 1: Recognizing and identifying

- Main part of this phase will be to “recognize” the needs for IWRM and to grasp the overall picture of the issues existing in the basin.
- ✓ Do you understand the needs and problems?
- ✓ Are you in need for IWRM?
- ✓ Are you aware of the past evaluation results and the current situation?
- ✓ Are you thinking into the future?

## Phase 2: Conceptualizing

- This phase is to understand the overall structure of the problem and conceptualize future actions.
- ✓ Is it in line with the social demands?
- ✓ Is it well-balanced?
- ✓ Do you understand the constraints and are you exploring “what you can do?”?



- **Phase 3: Coordinating and detail planning**
- This phase finalizes the draft plan formulated in the Phase 2 into a detailed plan and **coordinate with stakeholders towards reaching an agreement.**
- ✓ Is transparency secured (satisfying to the reason)?
- ✓ Are stakeholders convinced (satisfying to the heart)?
- ✓ Is it socially fair (satisfying to the law)?
  
- **Phase 4: Implementing, monitoring and evaluating**
- This phase is to implement, develop, manage and operate the agreed scheme or framework (includes infrastructure development or **establishment of legislation or institutional framework**).
- ✓ Is the implementation program executed promptly?
- ✓ Is the system adapted and functioning?
- ✓ Are there any new problems with the new approach/scheme?



# Key For Success and Example(s) in Japan





# What is “Key For Success”?

- **A ‘Key for Success’ is**  
**a key that can guide a practitioner**  
**to help make IWRM succeed.**

## ☆ Example of Key for Success [1.1.1]

3.1 Recognizing and identifying

3.1.1 Recognition

[1.1.1]

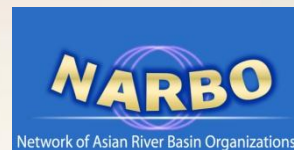
Be aware of IWRM efforts in your river basin, region or country.

- In order to recognize the necessity for introducing or enhancing IWRM, you need to proactively find out the current status of IWRM activities in your basin, region or country. It helps to recognize the need for an IWRM approach and where you stand in the IWRM process. Such information is also useful in explaining to others and for expanding IWRM recognition.

- First, understand the definition of IWRM and its benefits. Take a look at basins where an IWRM approach has been implemented. See how the definition of IWRM has actually been put into practice and how they enjoy the benefits. . . . .

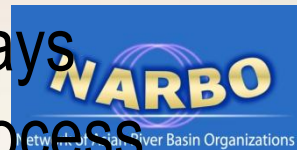
Guidelines Part2-1 p.18

3.1.1 Recognition



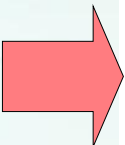
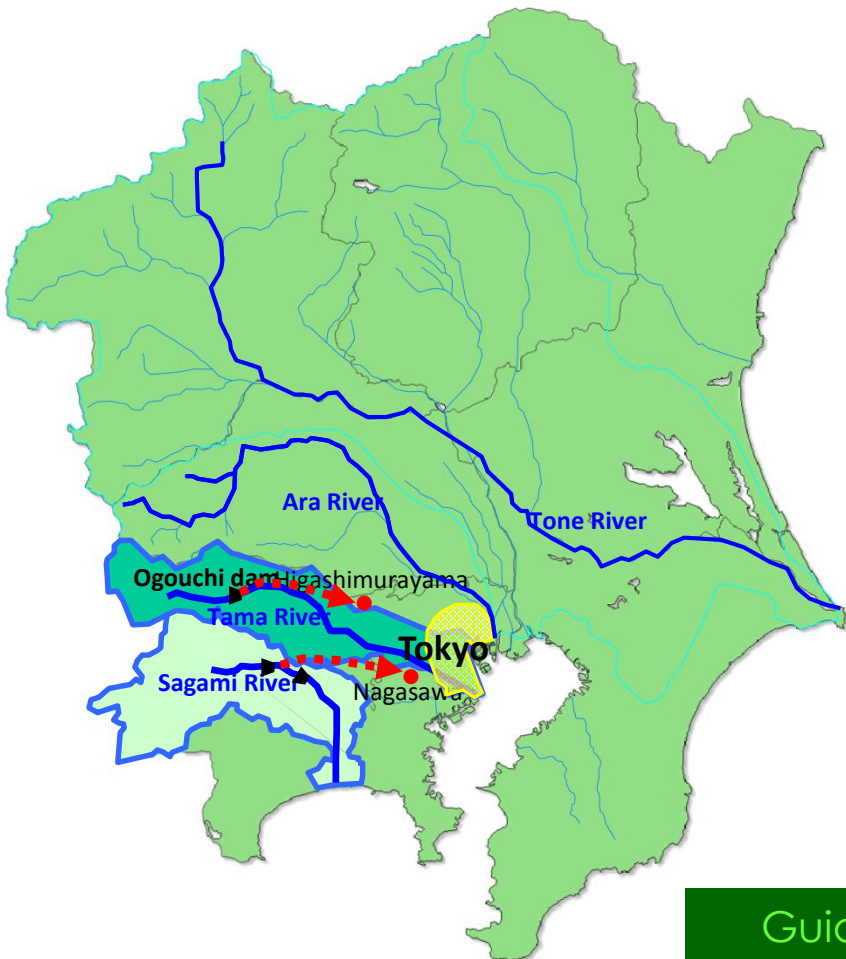
# Example(s) in Japan

- This is the case of Tone-Ara River to know the process of IWRM in Japan. Tone-Ara River is located near Tokyo metropolis.
- This process is the history of **coordinating** among stakeholders.
- There are another example in Japan(in Yoshino river basin,in Toyogawa river basin etc...)
- **Progress of IWRM is various.** This is not the only way to enhance it. As situation surrounding river basin is always changing, Japan is now being implementing IWRM process.

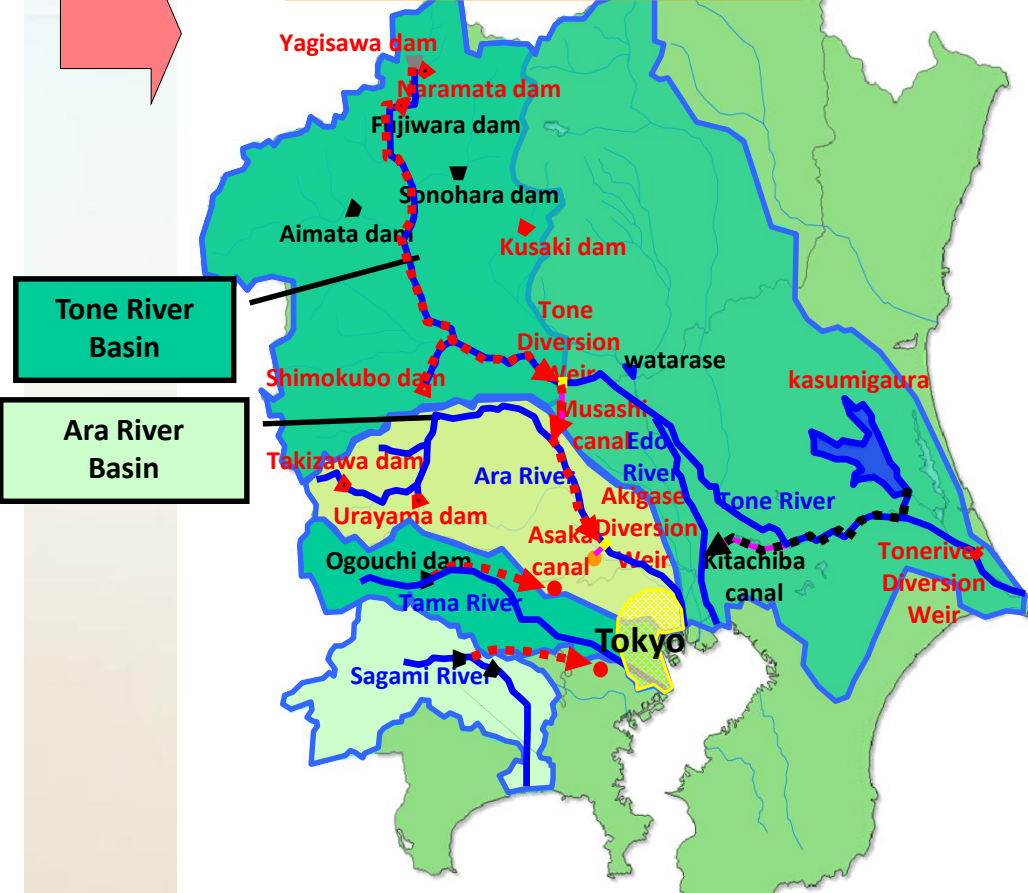


# Water Resources of Tokyo

Water Resources of Tokyo before 1960's



Water Resources of Tokyo in 2012 (JWA facilities)



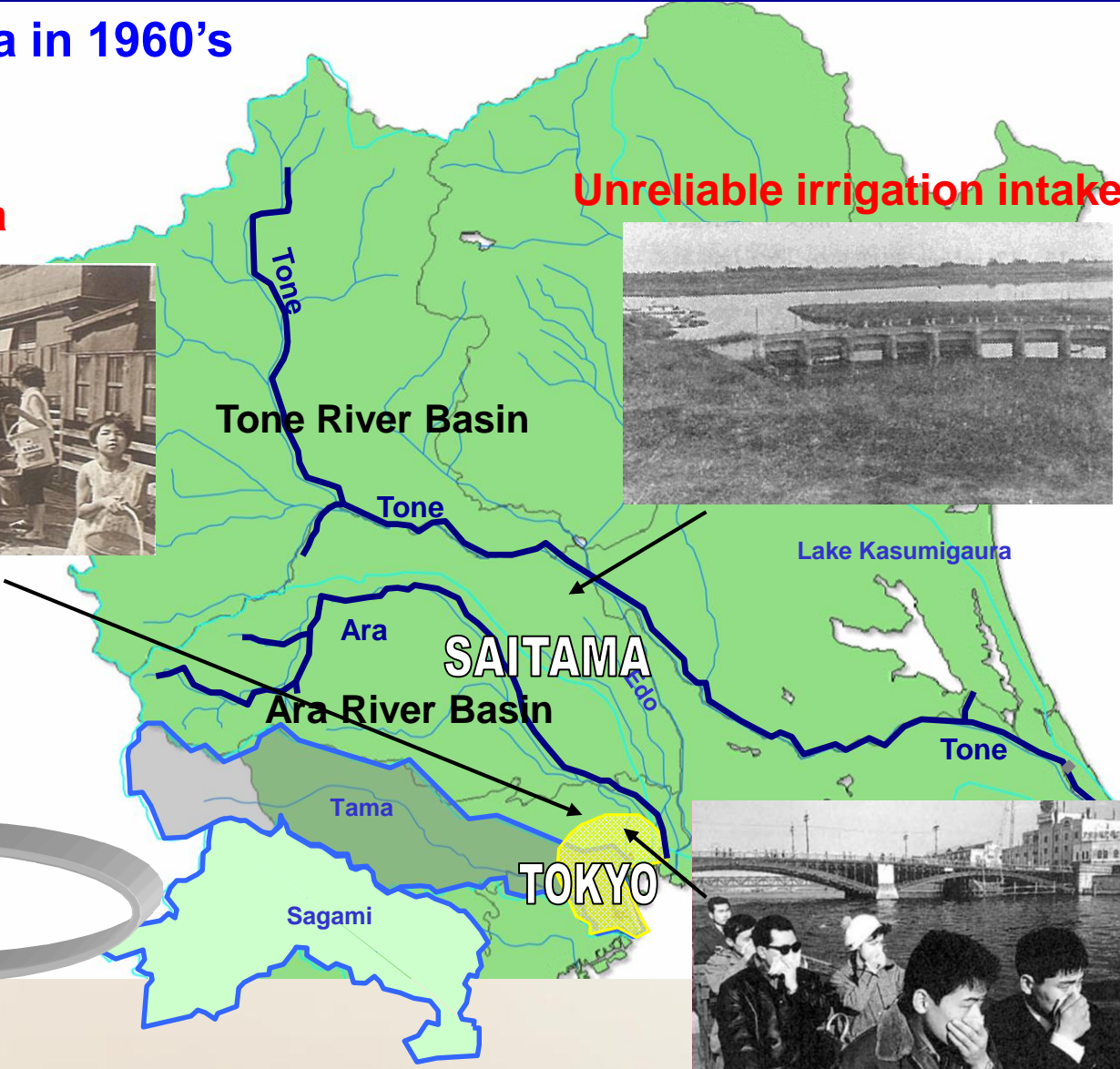
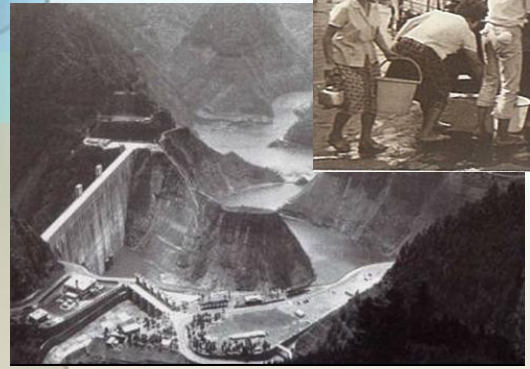
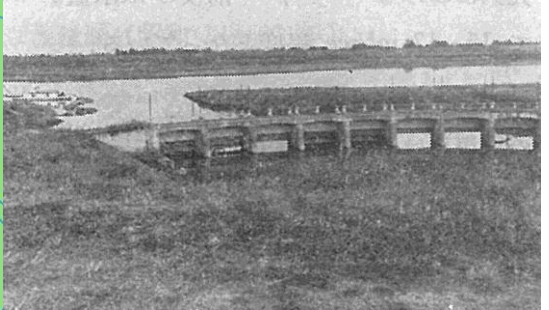


# IWRM Process in the case of Tone-Ara River Basin ①

## Tokyo Metropolitan Area in 1960's

**Serious water shortage  
In the metropolitan area**

**Unreliable irrigation intake**



**Pollution in urban river**



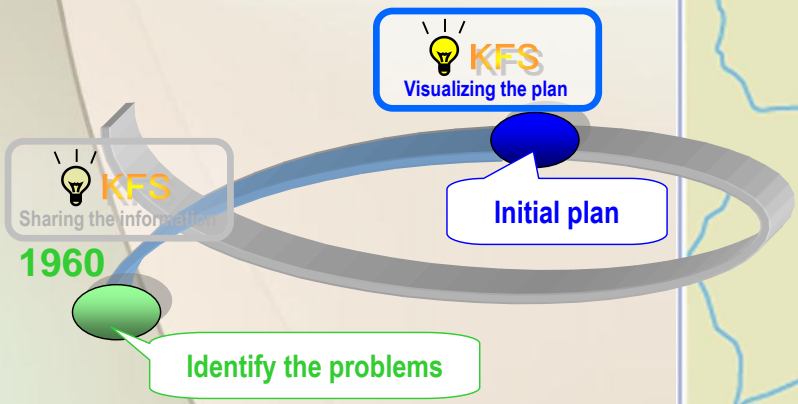
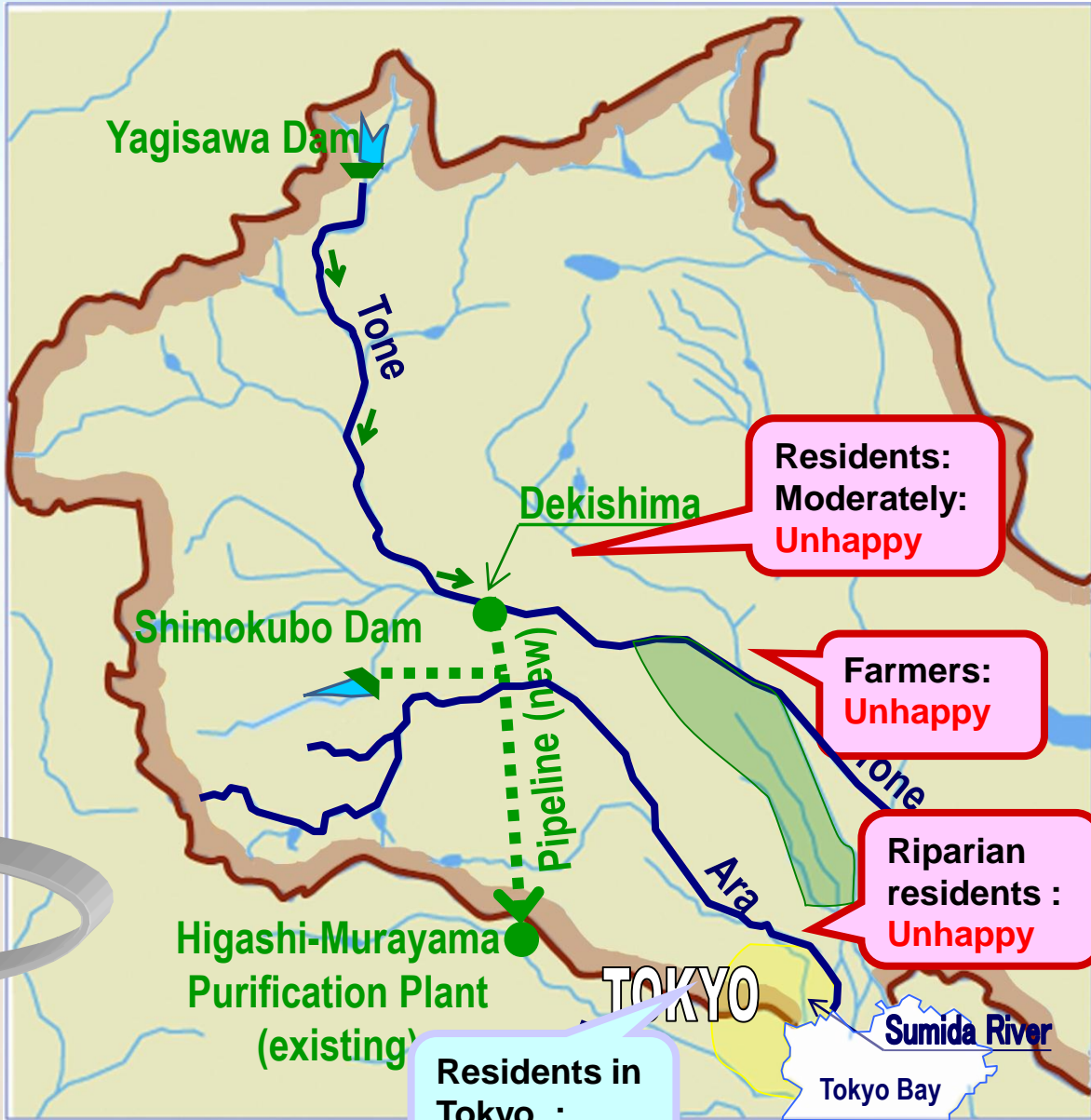
1960

Identify the problems

# IWRM Process in the case of Tone-Ara River Basin ②

## Initial Plan by Urban sector

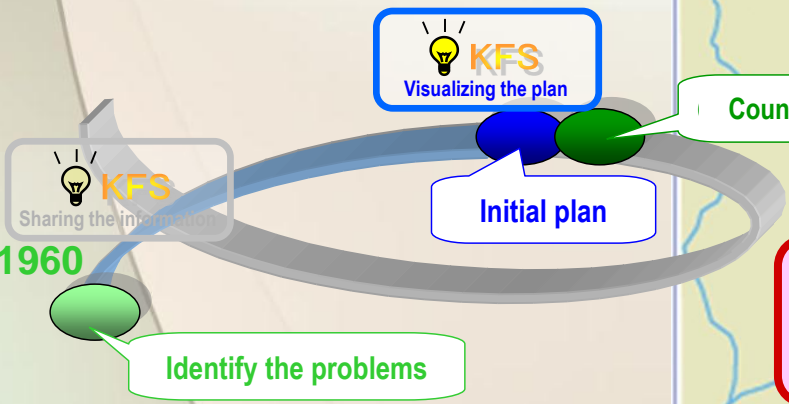
- Construction of dams and pipelines for increasing available water.
- But Residents and Farmers near the middle of Tone river basin felt unhappy due to decrease of river flow.



# IWRM Process in the case of Tone-Ara River Basin③

## Counterproposal by Irrigation Sector

- Construction of dams and barrage
- Rehabilitation of the existing irrigation canal
- **But Residents in Tokyo felt unhappy due to increase of Project cost.**

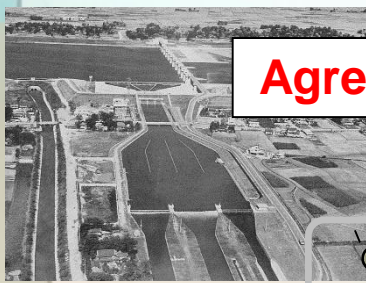




# IWRM Process in the case of Tone-Ara River Basin ④

## Middle Course (managed by JWA)

- Construction of dams, barrage and diversion
- Integrated plan & management by JWA



**Agreement!**

**KFS**  
Visualizing the plan

**KFS**  
Sharing the information

Identify the problems

Initial plan

Counterproposal

**KFS**  
Several alternative proposals

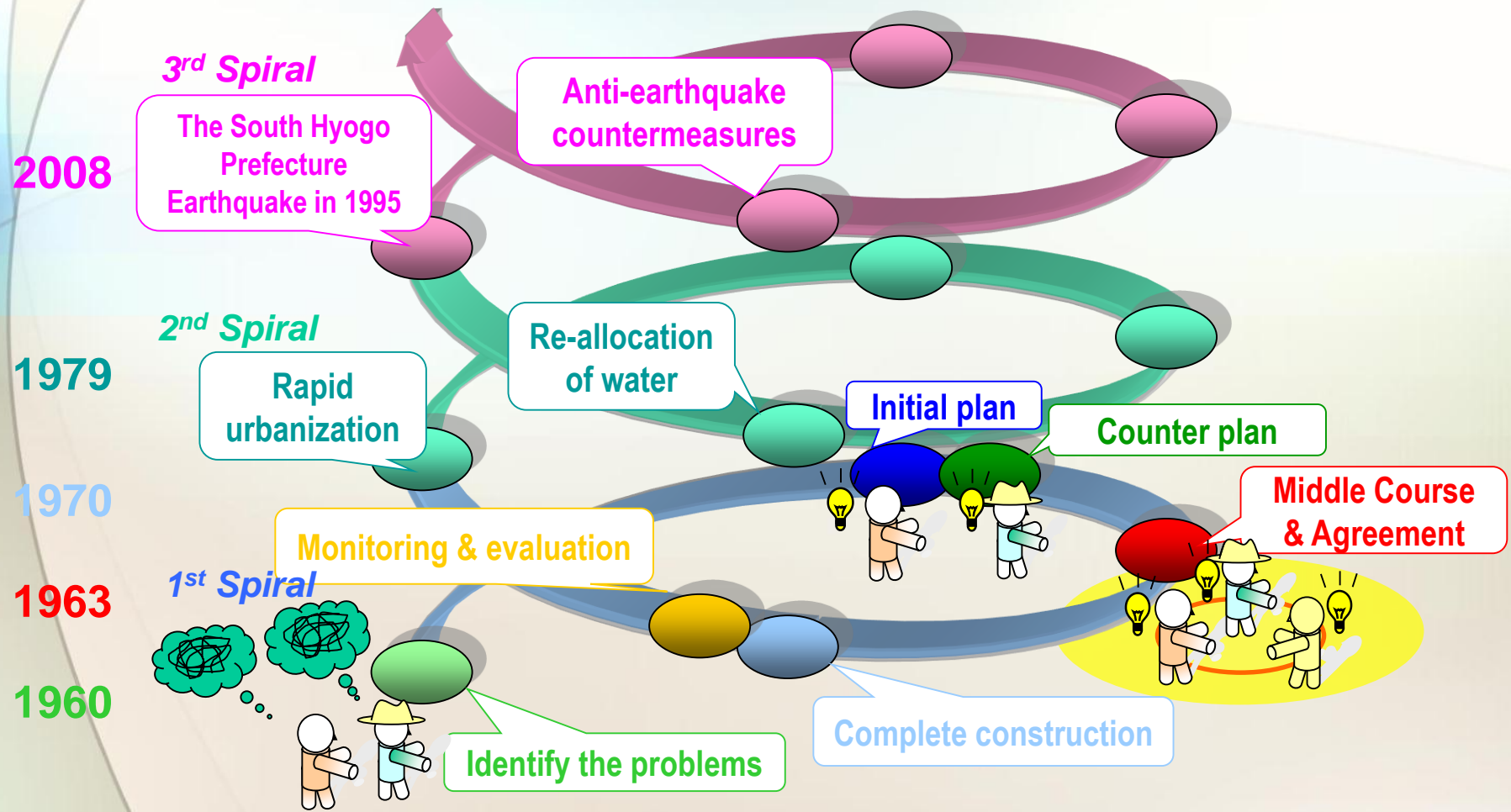
1963  
Middle Course & Agreement

Residents in Tokyo : Moderately Happy



# IWRM Process in the case of Tone-Ara River Basin ⑤

*Continuous efforts to meet changing social requirements.*



NARBO - Network of Asian River Basin Organizations - Microsoft Internet Explorer の提供元: 水資源機構

http://www.narbo.jp/activities.html

お気に入り | おすすめサイト | Web スライス ギャラリー

NARBO - Network of Asian River Basin Organizati...

Google Custom Search Search in NARBO.jp

**NARBO** Network of Asian River Basin Organizations

Top | What's NARBO | NARBO Activities | Database | Newsletter

Top > NARBO Activities

**NARBO Activities**

Upcoming Events

Year	Activity	Date	
2015	7th World Water Forum	12-17 April	Daeg Korea
	The 9th IWRM Training	TBD	TBD
	NARBO RBO Benchmarking Program 2013-2014 (RBOB 2013): Peer Review Training for Nam Theun Nam Kading River Basin Committee (NT-NKD RBC)	January or February	NT-NKD RBC, Lao PDR
2014	RBOB 2013: Peer Review Training for Selangor Water Management Authority (SWMA)	January or February	SWMA, Malaysia
	RBOB 2013: Peer Review Training for Help Davao	January or	

↑ TOP

Please visit  
 NARBO  
 webpage  
[www.narbo.jp](http://www.narbo.jp)

Thank you for your attention

