

(8)Global Water Partnership Southeast Asia (GWP-SEA)

Gedung Utama Lama Lantai 3 – Ditjen SDA, Dep.PU

Date of preparation: / /2009

Name of the editor: Djoko Sasongko

1. About the organization

(1) Name of the organization and postal address of the office

Global Water Partnership Southeast Asia (GWP-SEA)
Gedung Utama Lama Lantai 3 – Ditjen SDA, Dep.PU
Jalan Pattimura No. 20 , Kebayoran Baru Jakarta 11210

(2) The representative of the organization

Mr.Siswoko Sastrodihardjo
Chair of GWP-SEA

(3) Purposes and roles of your organization

a) Historical background of the organization

The formation of a Southeast Asia Technical Advisory Committee (SEATAC) comprising initially of 8 selected experts from Indonesia, Malaysia, Philippines, Thailand, and Vietnam was seen as a first step towards the process of formation of a regional water partnership. Cambodia and the Lao People's Democratic Republic joined in 2000 and Myanmar joined in 2003.

The GWP-SEA regional water partnership was established in the year 2004 to take over SEATAC's role in the region.

b) Purposes and roles of the organization

The mission of GWP- SEA is to encourage, support, facilitate member countries in achieving sustainable water for all through the Integrated Water Resources Management (IWRM) approach.

The objective of GWP-SEA is to promote the principles of integrated water resources management and to that end:

- a) Identify critical needs of the region and riparian countries and stimulate Partners to meet the needs within their available human and financial resources;
- b) Support action at regional, national, local or river-basin level that will lead to the adoption and implementation of the principles of integrated water resources management;
- c) Help match needs to available resources;
- d) Strengthen mechanisms for sharing information and experience.

(4) Outline of the organization

1) Number of staff

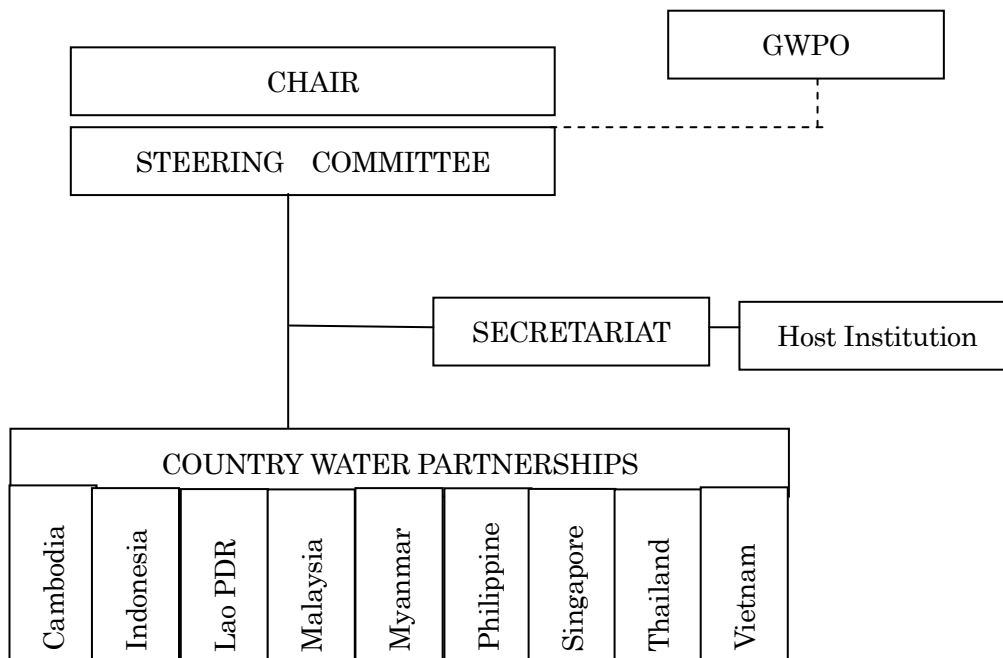
The organization is basically a loose network :

- Part-time activists at SEA and Country Steering Committee and Executive boards
- No permanent staff at all levels
- Two full time staff at SEA Regional Water Partnership
- Almost no full time staff at Country Water Partnership, but in a few countries

2) Amount of the annual budget in 2008

USD 477,000

3) Organizational chart



4) Ongoing projects

2009 activities based on annual Work Plan mostly comprising of workshops, meetings and trainings at regional and country levels

(5) Main events in 2008

2009 activities based on annual Work Plan mostly comprising of workshops, meetings and trainings at regional and country levels

2. About NARBO activity

(1) The contact person and organization's web-site

- 1) The name, position, phone & fax number, e-mail address of the contact person
Djoko Sasongko
GWP-SEA Program Coordinator
Phone and Fax . +62 21 739 6792 , E-mail : djoko@gwpsea.org, dsas@cbn.net.id
- 2) The organization's website URL (English and local language respectively)
<http://www.gwpsea.org>

(2) Activities your organization implemented in 2008 as the member

- Implemented workshops, seminars and trainings on IWRM at national level.
- Supported RBO formation and development
- Developed IWRM ToolBox.

(3) Resolutions and expectations for NARBO activities in 2008

1) Your organization's resolutions

GWP-SEA will continuously undertake its core activities to implement efforts to promote IWRM at regional, national, local and river basin level.

2) Expectations of NARBO activities

It is expected that NARBO will cooperate in workshops, seminars and training on IWRM implementation at river basin level organized by GWP-SEA.

One important event is Workshop on River Basin Organization and Management which will be organized by GWP-SEA in cooperation with DGWR of Indonesia , in Jogjakarta, Indonesia from 18 – 19 June 2009 where NARBO is expected to sponsor participants from SEA countries.

3. Questions to RBO members

(1) Areas which your organization has improved the performance in 2008

Generate better understanding and commitments from government organizations to develop enabling environment for IWRM and to reform IWRM institutions

(2) The way in which your organization was able to do so

Organized IWRM workshops and trainings.

(3) In what way NARBO has helped your organization

Not yet in 2008