

(DRAFT)

## **Member's Annual Report 2009**

Date of preparation: 28/06/2010

Name of the editor: Md. Moshir Rahman

### **1. About the organization**

(1) Name of the organization and postal address of the office

Local Government Engineering Department (LGED)

LGED Headquarters, Sher-e-Banglanagar, Agargaon, Dhaka-1207, Bangladesh.

(2) The representative of the organization

<Please write the name and position of the representative>

Md. Wahidur Rahman,

Chief Engineer, LGED, Dhaka, Bangladesh.

(3) Purposes and roles of your organization

a) Historical background of the organization

The rural development paradigm was first conceptualized at Bangladesh Academy of Rural Development (BARD), Comilla ([www.bard.gov.bd](http://www.bard.gov.bd)) in early sixties which is popularly known as 'Comilla Model'. The components of Comilla Model are as follows:

1. Two tier Cooperatives - Krishak Samabaya Samity (KSS, i.e. farmers cooperative association) and Thana (Upazila) Central Cooperatives Association (TCCA)
2. Rural Works Programme (RWP)
3. Thana (Upazila) Irrigation Programme (TIP)
4. Thana (Upazila) Training and Development Centre (TTDC)

Three components out of four (except no.1) are now being implemented by LGED. An Engineering Cell was established in the Local Government Division (LGD) under the Ministry of Local Government, Rural Development and Cooperative (MLGRD&C) in 1970s to oversee the rural works program. To administer rural works program nation wide in an organized approach, the Works Program Wing (WPW) was created in 1982 under the Development Budget. It was transformed into the Local Government Engineering Bureau (LGEB) under Revenue Budget of the Government in October, 1984. LGEB was upgraded as the Local Government Engineering Department (LGED) in August, 1992.

b) Purposes and roles of the organization

Local Government Engineering Department (LGED) is one of the largest public sector organizations in Bangladesh entrusted for planning and implementation of local level rural urban and small scale water resources infrastructure development programs. LGED works closely with the local stakeholders to ensure people's participation and bottom-up planning

(DRAFT)

in all stages of project implementation cycle. The broad objectives of LGED's development activities are to improve the socio-economic condition of the country through supply of infrastructures at local level and capacity building of the stakeholders. LGED works in a wide range of diversified programs like construction of roads, bridges/ culverts and markets to social mobilization, empowerment and environmental protection.

**The major functions of LGED can be broadly categorized as follows:**

- **Rural infrastructure development**
- **Urban infrastructure development**
- **Small scale water resources development**

### **Rural infrastructure development**

The main intervention of LGED for rural infrastructure development programs is to develop rural road transport network to improve accessibility to Growth Centers (GC), important social & administrative points and also development of GCs to expand marketing facilities of farm and non-farm products of the rural areas. GCs are economically important markets which play role as economic nucleus of a particular rural area. There are 2100 GCs and 18000 small markets across the country.

### **Urban infrastructure development program:**

LGED provides technical and management support to Urban Local Government Institutions (City Corporations, City Councils) to implement urban infrastructure development programs.

### **Small scale water resources development**

The intervention of LGED for small scale water resources development program is limited up the command area 1000 hectores. LGED implements the program involving the stakeholders during preparation and implementation stages and the operation & maintenance (O&M) of the project is taken-up by stakeholders through WMCA (Water Management Cooperative Association- which is an elected committee. Small Scale Water Resource Development activities include:

- i) construction of flood protection embankment, ii) conservation of water for irrigation and improvement irrigation systems, iii) construction of water control structures and Rubber Dams, iv) excavation and re-excavation of Canals, v) training to stakeholders and WMCA members.

#### **(4) Outline of the organization**

##### **1) Number of staff**

The total manpower under permanent payroll is 10129 both at head quarters and field levels.

##### **2) Amount of the annual budget in 2009**

(DRAFT)

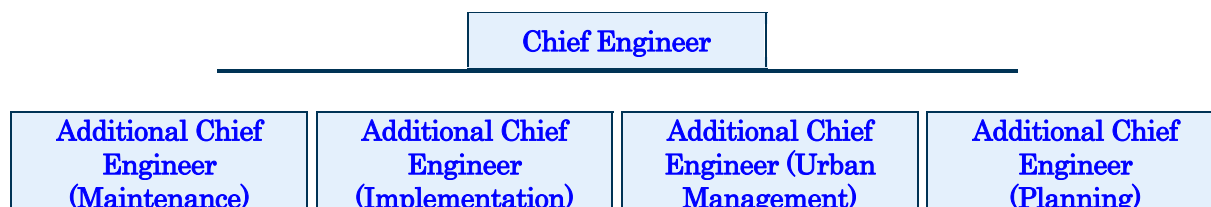
30482 million (UD\$ 448)

3) Organizational chart

<Please attach the organization chart here>

**Organization of LGED**

LGED HQ Level: (Manpower: 146)



LGED Regions: (Manpower: 70)

<b>Superintending Engineer (Rangpur Circle)</b>	<b>Superintending Engineer (Rajshahi Circle)</b>	<b>Superintending Engineer (Khulna Circle)</b>	<b>Superintending Engineer (Faridpur Circle)</b>	<b>Superintending Engineer (Barisal Circle)</b>
<b>Superintending Engineer (Dhaka Circle)</b>	<b>Superintending Engineer (Mymensingh Circle)</b>	<b>Superintending Engineer (Sylhet Circle)</b>	<b>Superintending Engineer (Comilla Circle)</b>	<b>Superintending Engineer (Chittagong Circle)</b>

LGED District Level: (Manpower:854)

<b>64 Executive Engineer (64 District)</b>
--

LGED Upazilla Level: (Manpower: 9059)

<b>481 Upazila Engineer (481 Upazila)</b>
---

4) Ongoing projects

<Please write about the ongoing projects>

There are about 80 Projects currently under implementation under the three sectors. Of the 80 Projects, 53 are Rural Development, 11 are Urban Development and 3 are Water Sector Development Projects. LGED, besides its own activities, has been implementing 13 Projects of other Ministries.

(5) Main events in 2009

<Please write about the main events which were held in 2009 which your organization involved in>

(DRAFT)

## **2. About NARBO activity**

(1) The contact person and organization's web-site

1) The name, position, phone & fax number, e-mail address of the contact person

Md. Moshiur Rahman, Superintending Engineer, IWRM Unit, LGED.

Phone # 88-02-9127411, Fax # 88-02-9123913, e-mail: [se\\_iwrm@lged.gov.bd](mailto:se_iwrm@lged.gov.bd)

2) The organization's website URL (English and local language respectively)

lged.gov.bd

(2) Activities your organization implemented in 2009 as the member