

Figure 1 Working Area of Jasa Tirta I Public Corporation

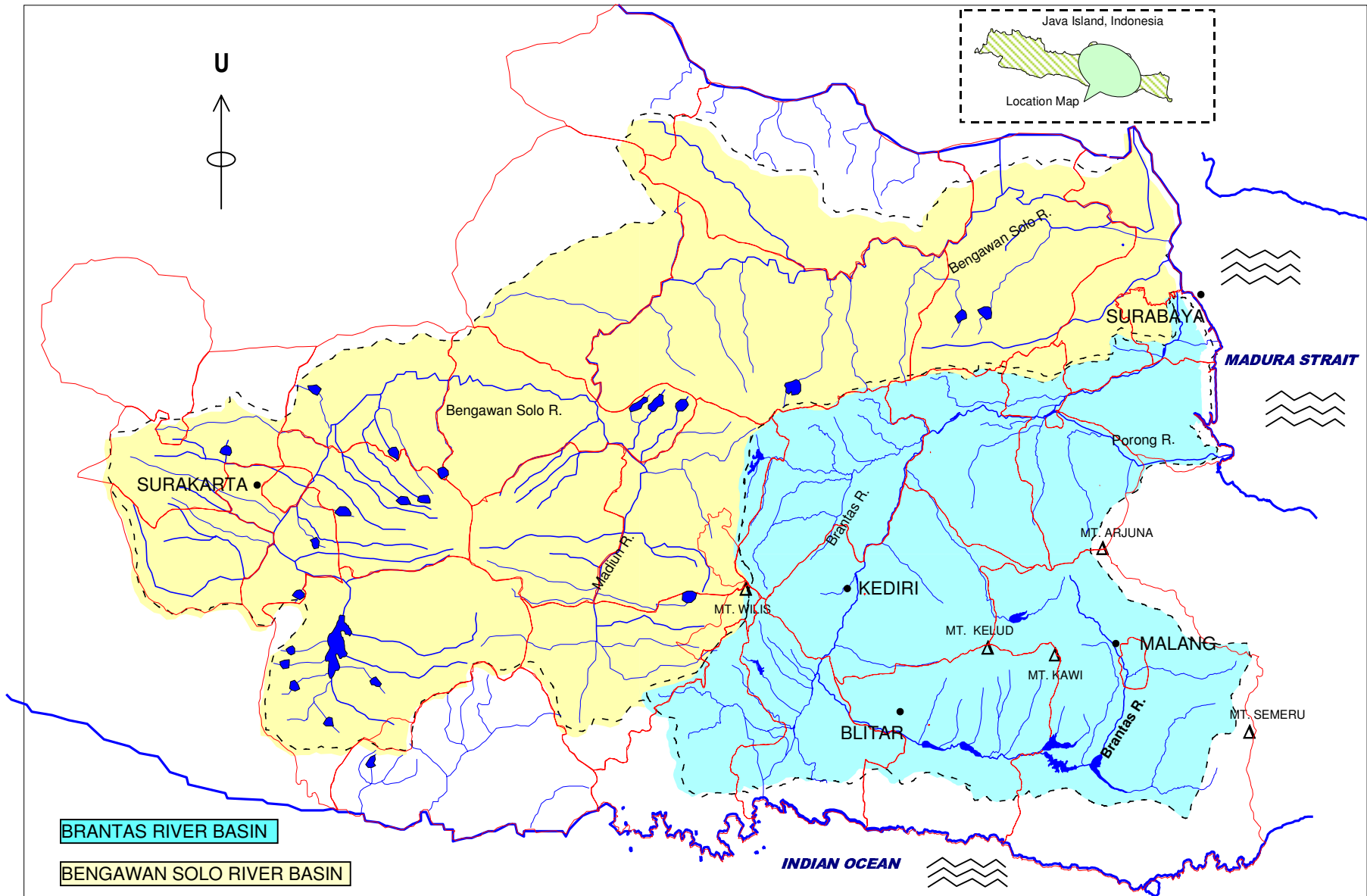


Figure 2 Organization Structure of Jasa Tirta I Public Corporation

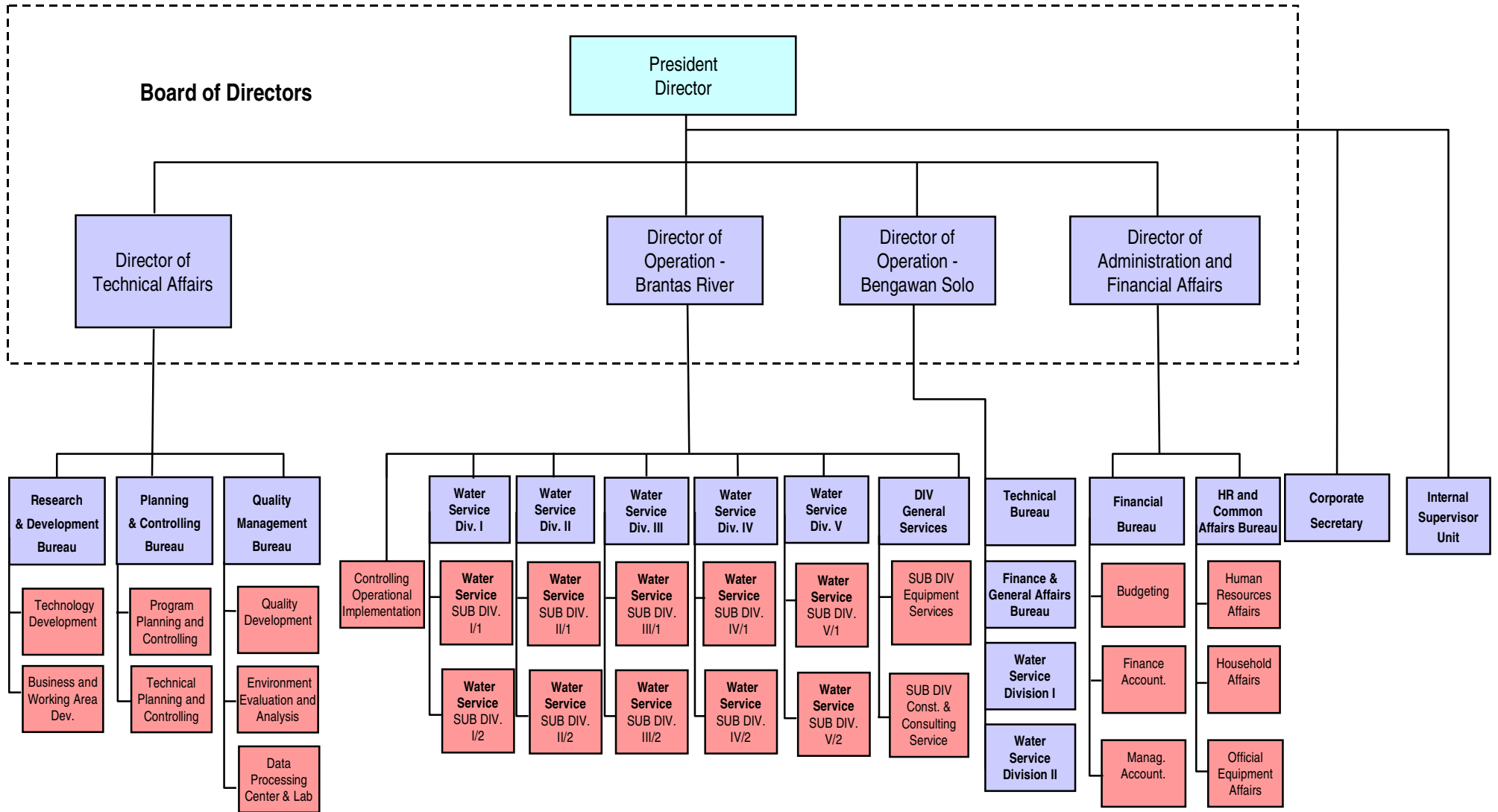
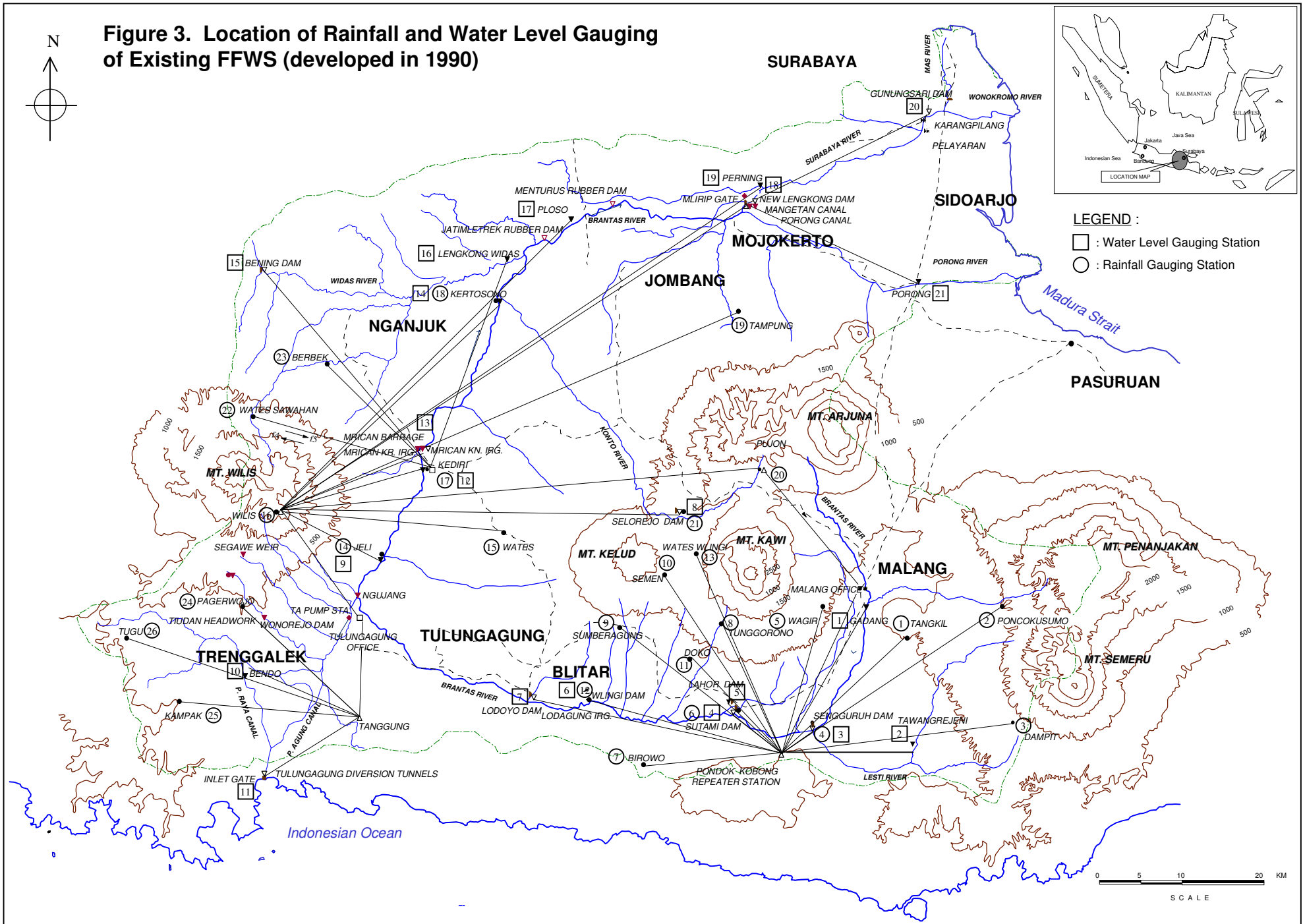


Figure 3. Location of Rainfall and Water Level Gauging of Existing FFWS (developed in 1990)

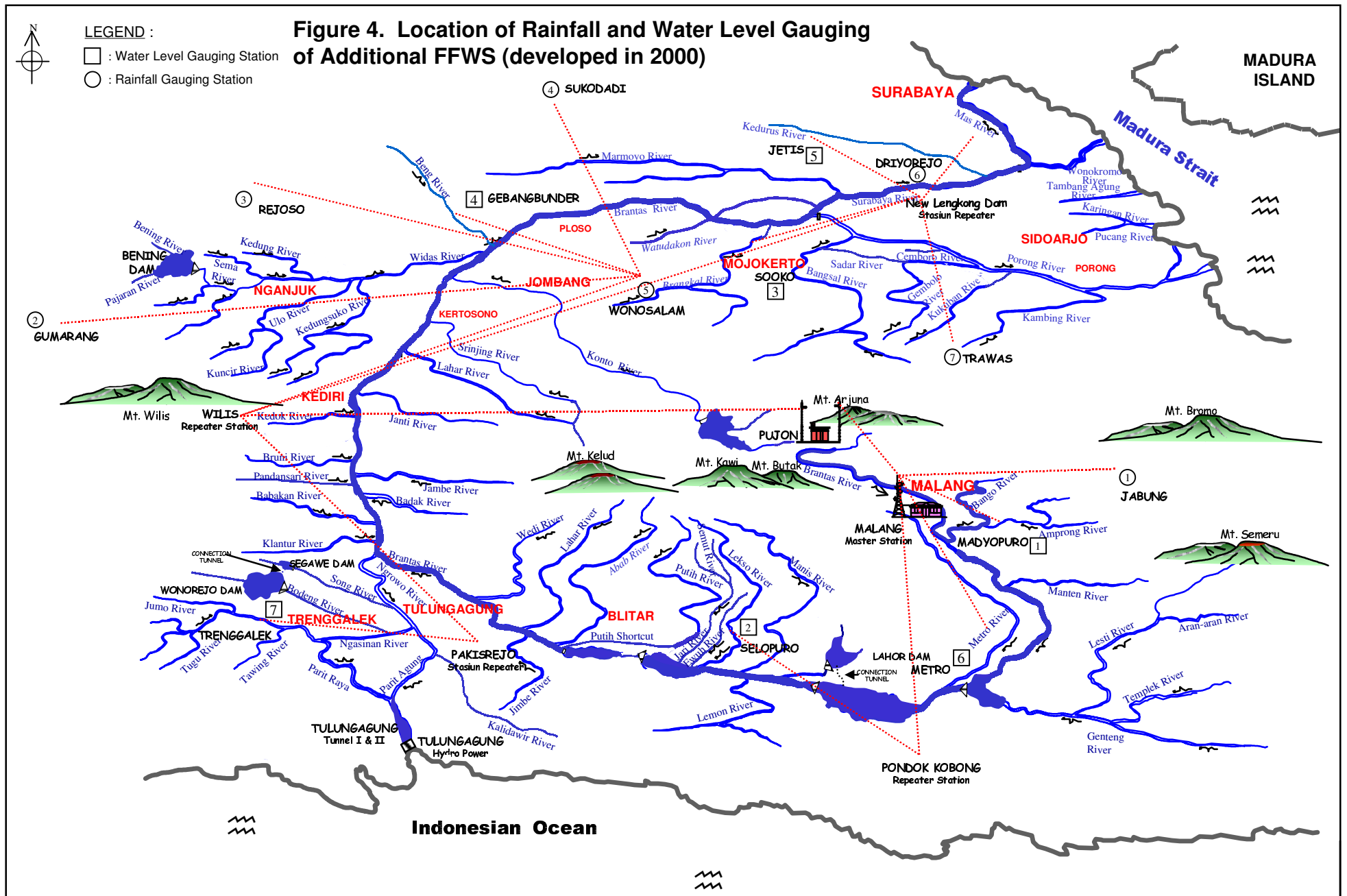




LEGEND :

- : Water Level Gauging Station
- : Rainfall Gauging Station

Figure 4. Location of Rainfall and Water Level Gauging of Additional FFWS (developed in 2000)



LEGEND

- Location of real time water quality monitoring stations (23 stations)

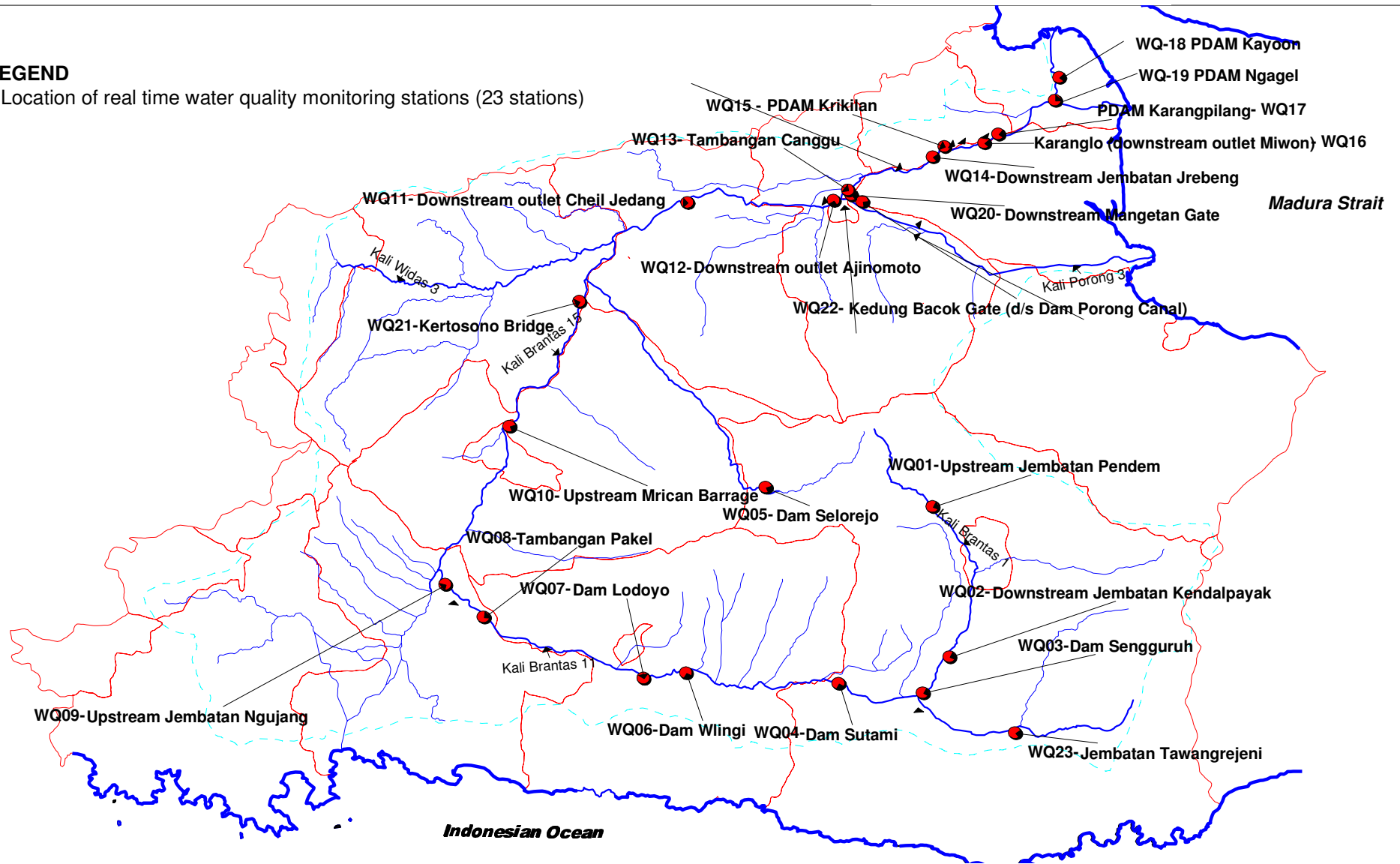
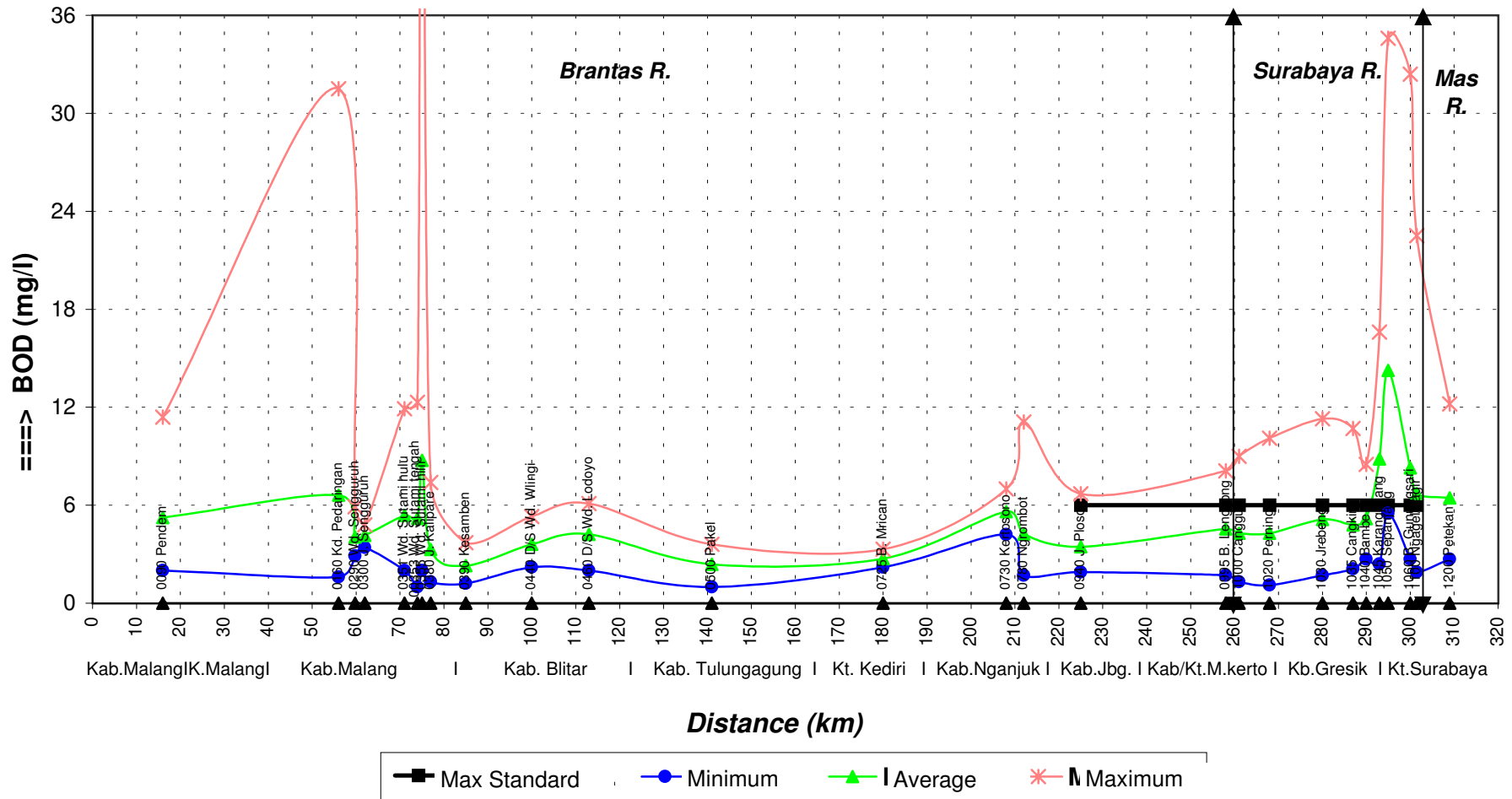
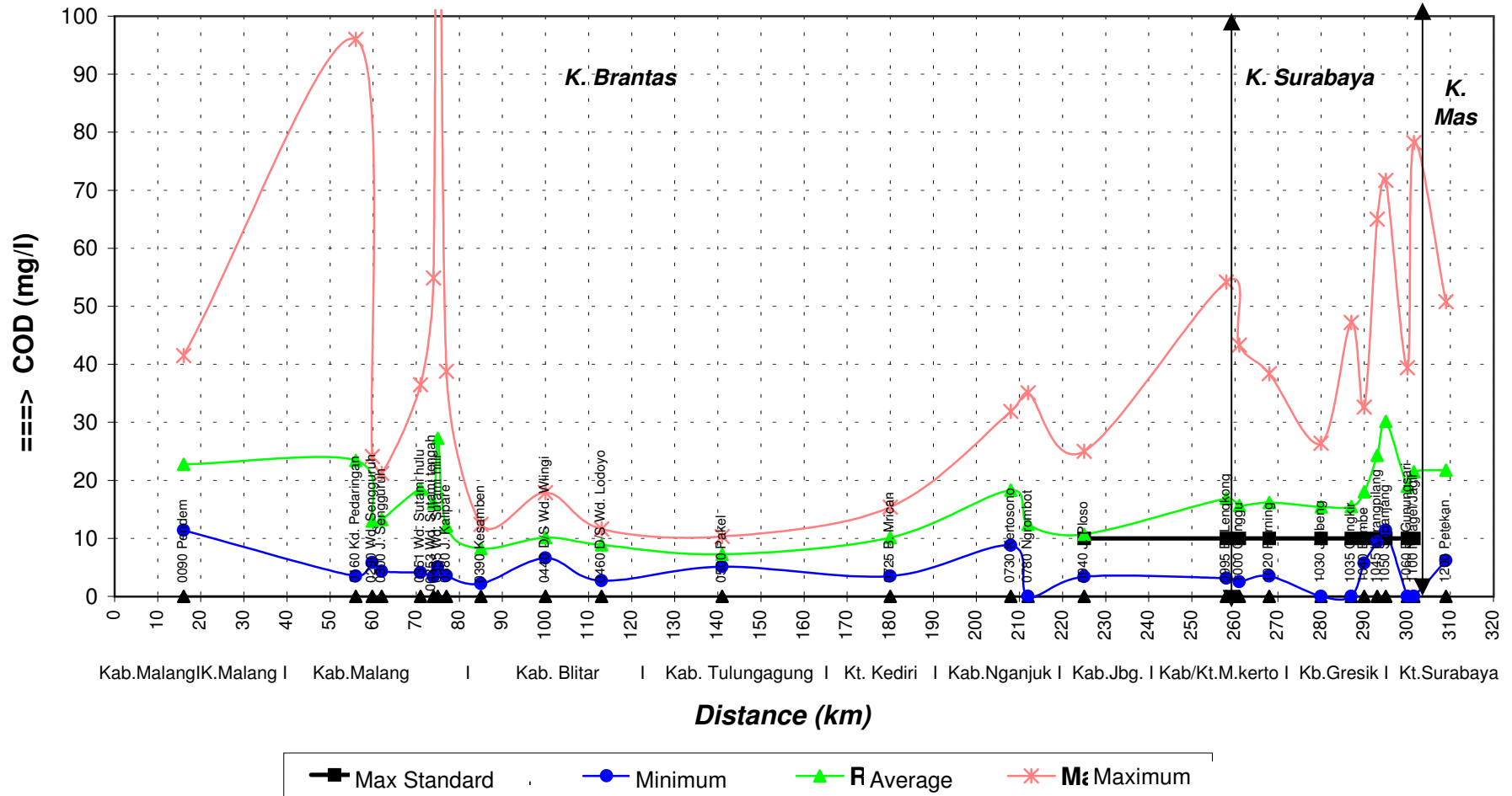


Figure 5. Water Quality Online Monitoring Stations in Brantas River Basin

**Figure 6 WATER QUALITY MONITORING RESULT
Along Brantas River, Surabaya River & Mas River
Periode : 2004
Biochemical Oxygen Demand (BOD)**



**Figure 7 WATER QUALITY MONITORING RESULT
Along Brantas River, Surabaya River & Mas River
Periode : 2004
Chemical Oxygen Demand (COD)**



**Figure 8 WATER QUALITY MONITORING RESULT
Along Brantas River, Surabaya River & Mas River
Periode : 2004
Dissolved Oxygen**

